

8 Silverdale Close, Frodsham

£300,000 Freehold

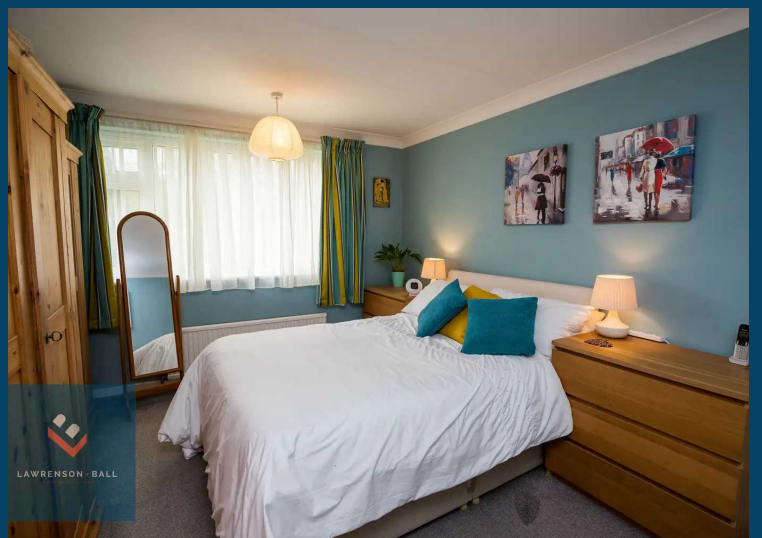
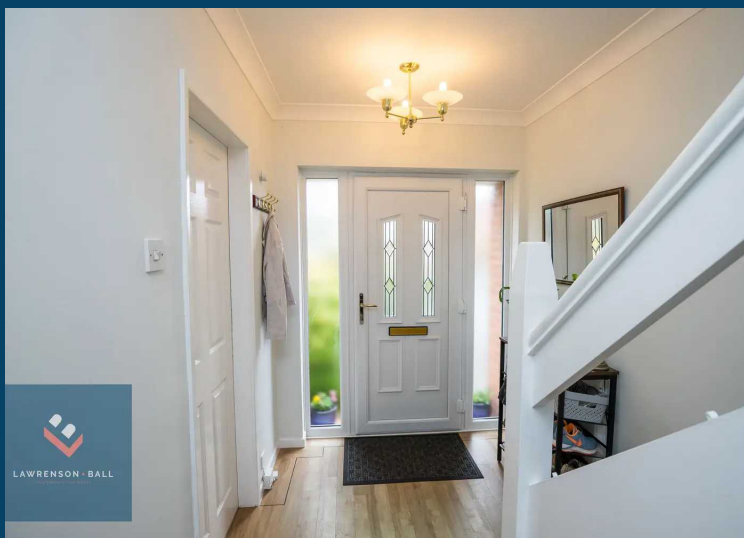
Three Bedroom Semi-Detached House • Quiet Cul-De-Sac Location • Lounge, Dining Room and Conservatory • Well Presented • Front and Rear Gardens • Driveway and Garage • Freehold • Gas Central Heating and Double Glazing



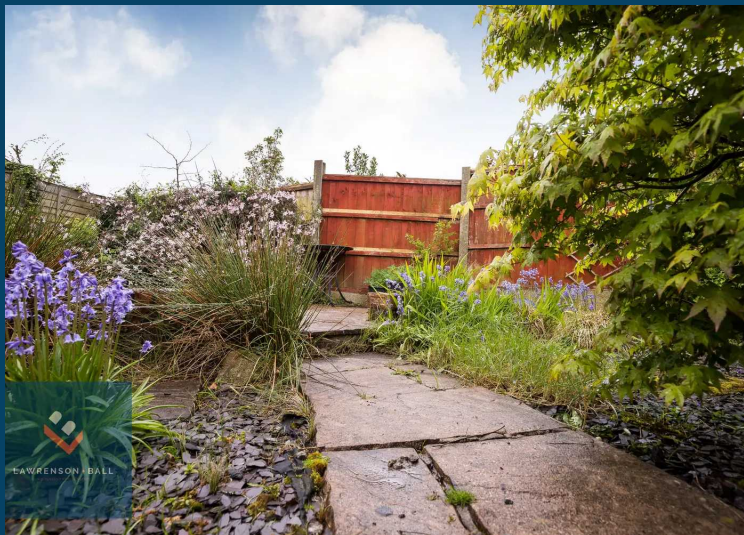
Council Tax band: C

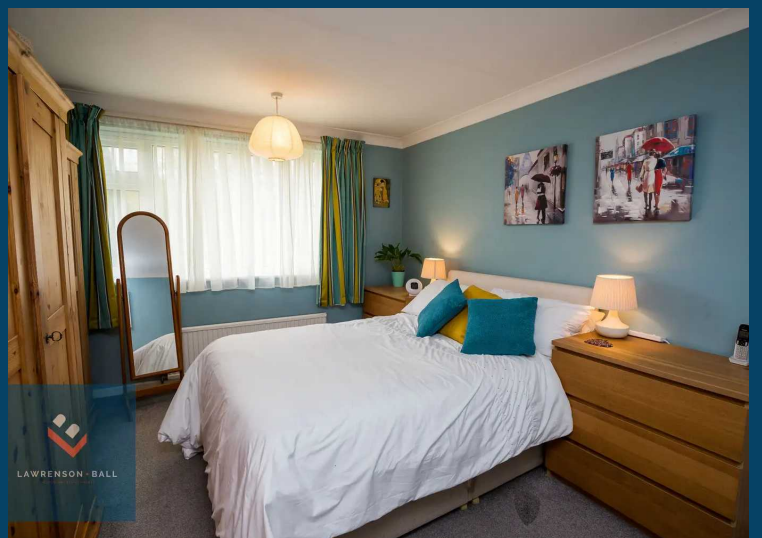
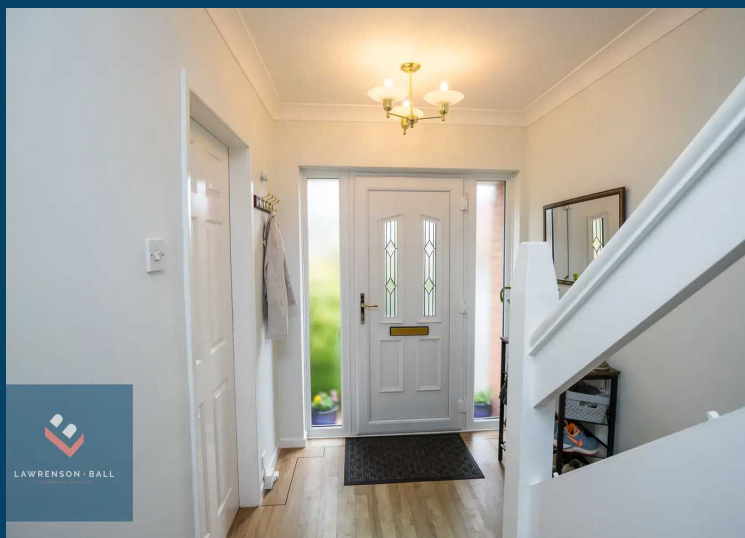
Tenure: Freehold

- Three Bedroom Semi-Detached House
- Quiet Cul-De-Sac Location
- Lounge, Dining Room and Conservatory
- Well Presented
- Front and Rear Gardens
- Driveway and Garage
- Freehold
- Gas Central Heating and Double Glazing





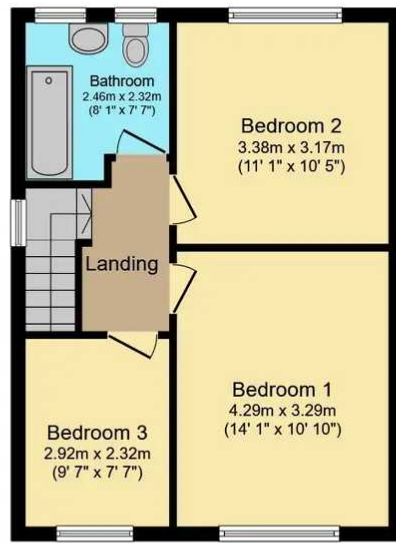






Ground Floor

Floor area 54.0 m² (581 sq.ft.)



First Floor

Floor area 44.0 m² (473 sq.ft.)

TOTAL: 97.9 m² (1,054 sq.ft.)

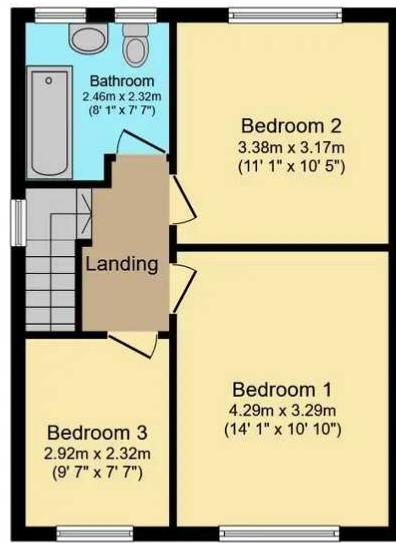
This floor plan is for illustrative purposes only. It is not drawn to scale. Any measurements, floor areas (including any total floor area), openings and orientations are approximate. No details are guaranteed, they cannot be relied upon for any purpose and do not form any part of any agreement. No liability is taken for any error, omission or misstatement. A party must rely upon its own inspection(s). Powered by www.Propertybox.io

You can include any text here. The text can be modified upon generating your brochure.



Ground Floor

Floor area 54.0 m² (581 sq.ft.)



First Floor

Floor area 44.0 m² (473 sq.ft.)

TOTAL: 97.9 m² (1,054 sq.ft.)

This floor plan is for illustrative purposes only. It is not drawn to scale. Any measurements, floor areas (including any total floor area), openings and orientations are approximate. No details are guaranteed, they cannot be relied upon for any purpose and do not form any part of any agreement. No liability is taken for any error, omission or misstatement. A party must rely upon its own inspection(s). Powered by www.Propertybox.io

You can include any text here. The text can be modified upon generating your brochure.