



Two Bedroom Garden Apartment in Esentepe

Esentepe, Kyrenia East, North Cyprus

- Property Ref: 534
- Sea and mountains view.
- Walk distance to the beach.
- Rental management option for your property.
- Payment plan for 18 months.
- A communal swimming pool. Gym. Cafe. Children's playground.

£175,950



92 m² to 102 m²



2 Bedrooms



2 Bathrooms



9 Months Instalments



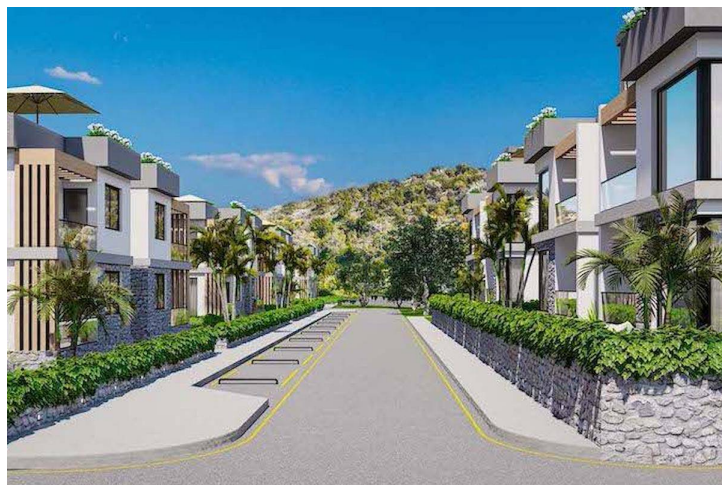
March 2025
Completion

Email: sales@dmgpropertygroup.com
Website: www.dmgpropertygroup.com

DMG PROPERTY
GROUP

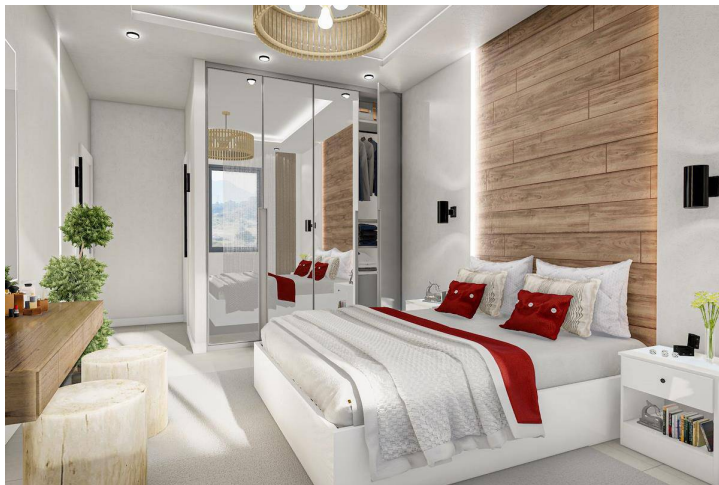
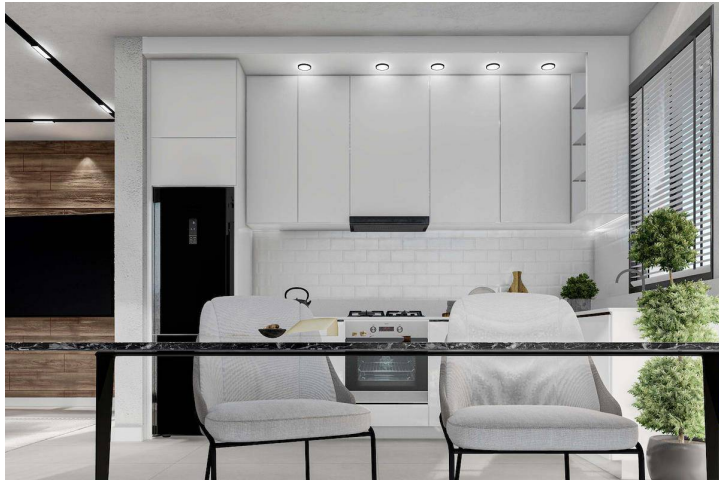
Two Bedroom Garden Apartment in Esentepe

Exterior Images



Two Bedroom Garden Apartment in Esentepe

Interior Images



Two Bedroom Garden Apartment in Esentepe

Floor Plan



Site Plan

Esentepe, Kyrenia East, North Cyprus



Project Location

This modern complex is located in the picturesque area of Esentepe right between the sea and the mountains.



Supermarket	1 min	Pharmacy	5 mins
Beach Club	1 min	Korineum Golf Club	7 mins
Beach	1 min	Kyrenia	25 mins
Restaurants and Bars	2 mins	Ercan Airport	40 mins
Petrol Station	2 mins	Larnaca Airport	65 mins

About the Project

Introducing a stunning contemporary development of 52 garden apartments and penthouses nestled in North Cyprus's picturesque landscapes. Set atop a scenic hillside, these residences offer breathtaking views of the sea and mountains.

Each meticulously designed home features:

Garden Apartments: 2 bedrooms, 2 bathrooms (including an en-suite), spanning 90 sq.m. with inviting terraces.

Penthouse Apartments: Luxurious 2-bedroom, 2-bathroom spaces covering 90 sq.m. with an expansive 100 sq.m. rooftop terrace.

Enjoy a host of lavish amenities designed for modern living:

Relax by the communal pool or take a leisurely stroll through the landscaped gardens.

Stay active in the state-of-the-art fitness center.

Unwind at the on-site cafe or let your children play in the dedicated area.

With the beach just steps away and a supermarket nearby, convenience meets luxury seamlessly.

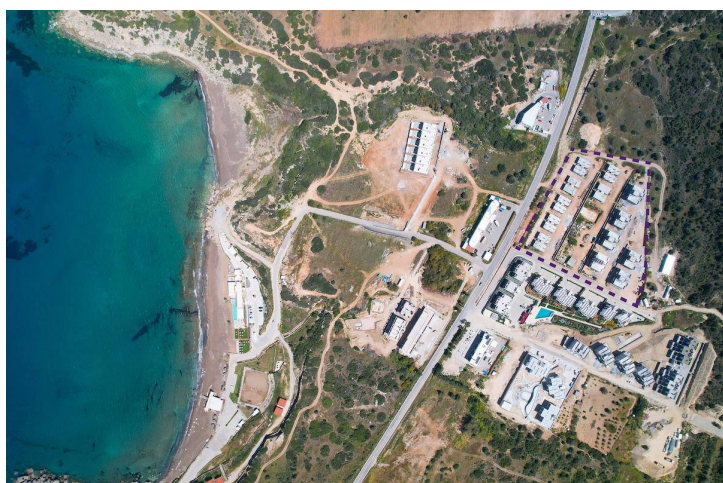
Explore nearby attractions like the Korineum Golf, Tennis, and Beach Club, just a 10-minute drive away, or venture into Kyrenia city center, only 25 minutes away.

Experience coastal living redefined, where luxury meets tranquility amidst North Cyprus's natural beauty. Discover your new home in this unparalleled collection of elegant apartments.

Two Bedroom Garden Apartment in Esentepe

Construction Status

April 2024



Lowest Price Unit For This Property Type

Property Info

Type

**2 Bedroom Garden
Apartment**

No

J1

Block

J

Floor

0

Interior

92.00 m²

Balcony Terrace

10.00 m²

Total Living Space

102.00 m²

Lowest Price Unit For This Property Type

Payment Plan

Current Date	Start Date	Delivery Date	Price	Initial Payment Amount
May 2024	January 2023	March 2025	£175,950	£61,582 35%

65% of the installment payment plan

1. Installment June 2024	£12,708
2. Installment July 2024	£12,708
3. Installment August 2024	£12,708
4. Installment September 2024	£12,708
5. Installment October 2024	£12,708
6. Installment November 2024	£12,708
7. Installment December 2024	£12,708
8. Installment January 2025	£12,708
9. Installment February 2025	£12,704

