



Herfeld Road

Maidstone ME15 8FB

£315,000



COUNTRY HOMES

Maidstone ME15 8FB

Situated in a popular modern residential development in the desirable area of Otham, is this 2 bedroom immaculate mid terraced house.

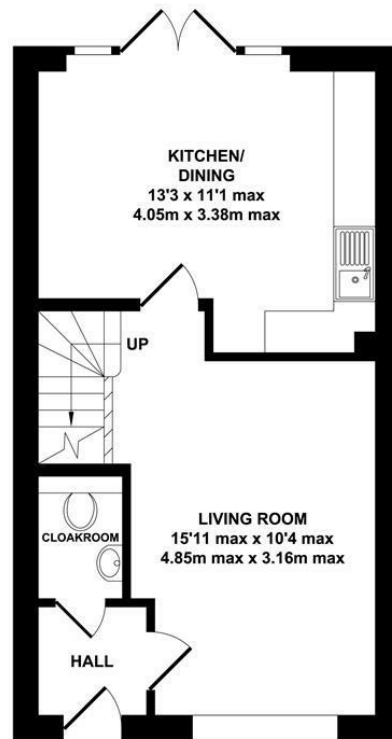
This newly built home features 2 bedrooms, a family bathroom, a separate lounge and an attractive kitchen with integrated appliances and a downstairs cloakroom. It has a good size kitchen/diner which opens on to the rear garden and 1 allocated parking space with a generous amount of visitor bays.

Still under building warranty, this house ticks all the boxes.

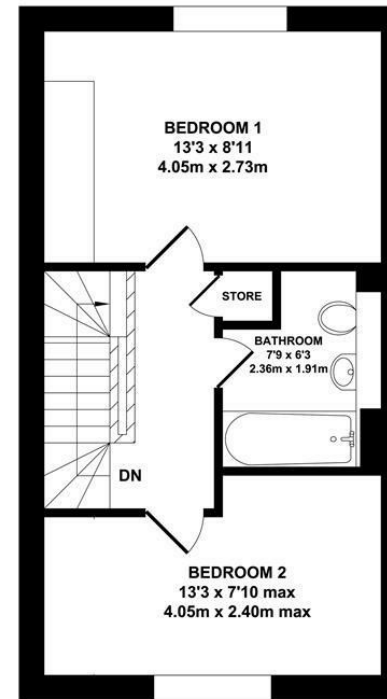
Don't miss out, call now to view!

- Newly built
- Under warranty
- Close to shops





GROUND FLOOR
APPROX. FLOOR AREA
343 SQ.FT.
(31.84 SQ.M.)

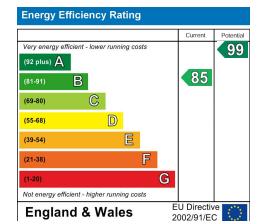


FIRST FLOOR
APPROX. FLOOR AREA
336 SQ.FT.
(31.18 SQ.M.)

TOTAL APPROX. FLOOR AREA 678 SQ.FT. (63.02 SQ.M.)

Whilst every attempt has been made to ensure the accuracy of the floor plan contained here, measurements of doors, windows, rooms and any other items are approximate and no responsibility is taken for any error, omission or mis-statement. This plan is for illustrative purposes only and should be used as such by any prospective purchaser. The services, systems and appliances shown have not been tested and no guarantee as to their operability or efficiency can be given.

Zome Media ©2025



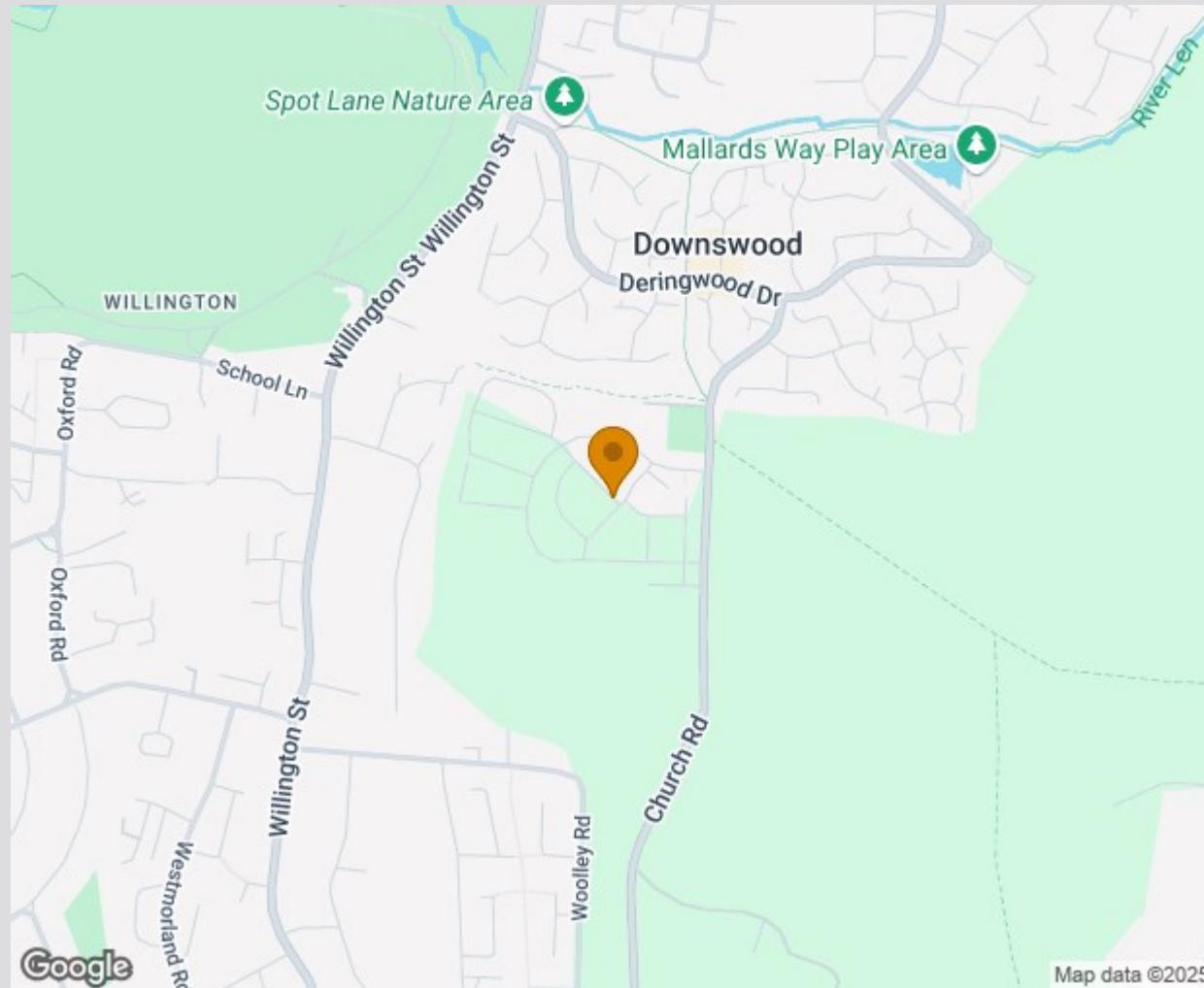




Location Map

Tenure: Freehold

Council tax band: C



TO VIEW CONTACT: 01622 94 22 22 allington@khp.me

www.khp.me



Zoopla.co.uk
Smarter property search

