



Blackmanstone Way

Maidstone ME16 0NT

Offers In The Region Of £440,000



COUNTRY HOMES

Maidstone ME16 0NT

We are delighted to introduce this stunning newly built detached property in the heart of Allington. Within walking distance to the Ofsted rating "Outstanding" primary school and Mid Kent shopping centre providing a local Waitrose, bakery, hairdressers, chemist and many more. It makes this home the perfect location.

It is on the local bus route into Maidstone town centre and situated next to junction 5, M20. While also having train stations nearby, with direct lines into London.

This new home has 3 bedrooms and a modern family bathroom with a bath and shower. It provides a welcoming atmosphere with the hallway that leads into the open plan lounge/diner and kitchen, making it the ideal home.

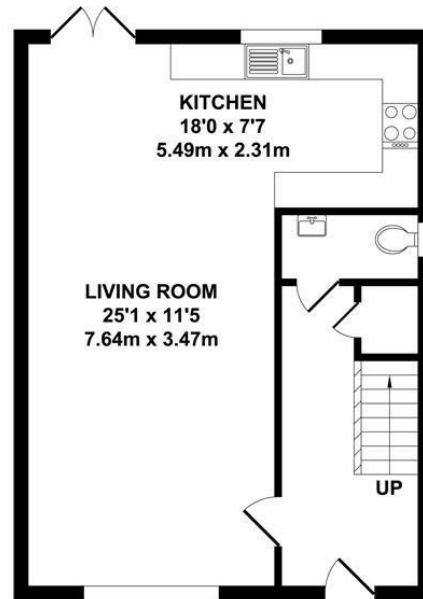
Open the patio doors into the tranquil rear garden, which makes this the perfect space for entertaining. This property has a front drive, providing ample parking.

Move straight in to this chain free property!

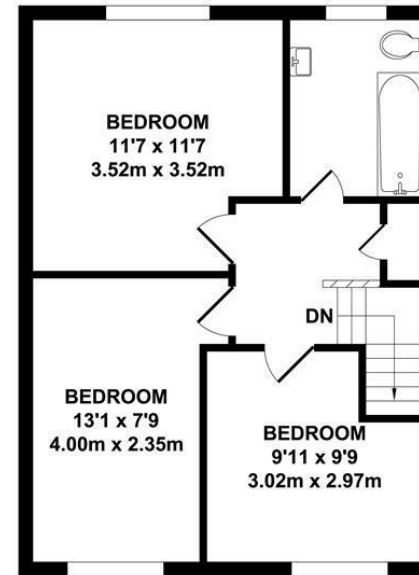
Call now to arrange a viewing.

- Chain free
- New home
- Close to schools
- Close to M20
- Walking distance to shops





GROUND FLOOR
APPROX. FLOOR AREA
451 SQ.FT.
(41.94 SQ.M.)

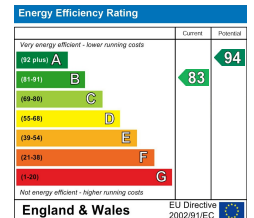


FIRST FLOOR
APPROX. FLOOR AREA
451 SQ.FT.
(41.94 SQ.M.)

TOTAL APPROX. FLOOR AREA 903 SQ.FT. (83.88 SQ.M.)

Whilst every attempt has been made to ensure the accuracy of the floor plan contained here, measurements of doors, windows, rooms and any other items are approximate and no responsibility is taken for any error, omission or mis-statement. This plan is for illustrative purposes only and should be used as such by any prospective purchaser. The services, systems and appliances shown have not been tested and no guarantee as to their operability or efficiency can be given.

Zome Media ©2025



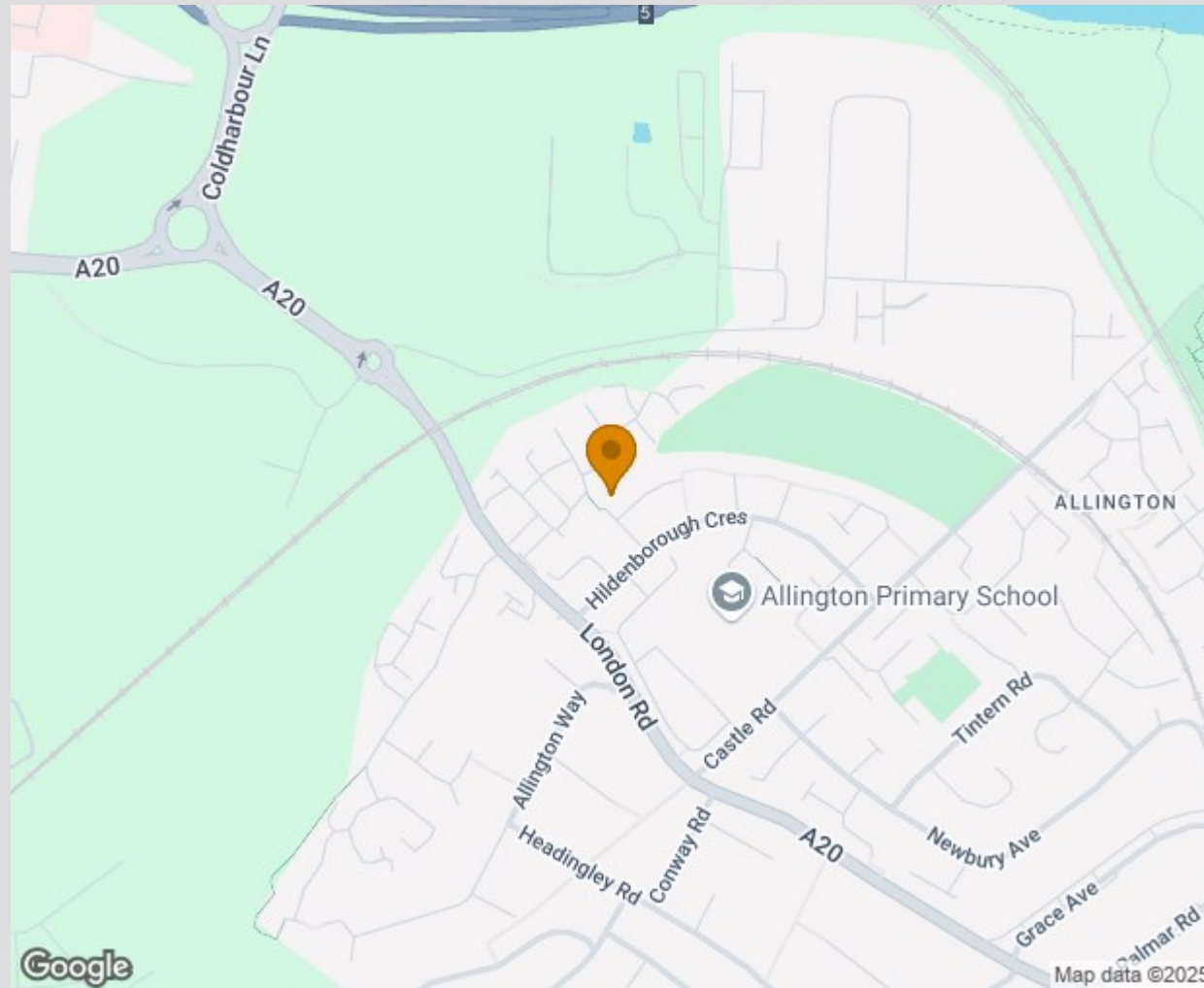




Location Map

Tenure: Freehold

Council tax band: E



TO VIEW CONTACT: 01622 94 22 22 allington@khp.me

www.khp.me



Zoopla.co.uk
Smarter property search

