



## Ashfield Close

Holborough Lakes ME6 5FN

Offers Over £450,000



COUNTRY HOMES



## Holborough Lakes ME6 5FN

Located on the popular development of Holborough lakes, this immaculate 3 bedroom detached house offers a perfect blend of comfort and modern living. With its open plan lounge/diner this property provides ample space for both relaxation and entertaining. The inviting atmosphere is enhanced by the well-proportioned layout, making it the perfect family home or ideal for couples. It has a kitchen, downstairs WC and ampules of storage.

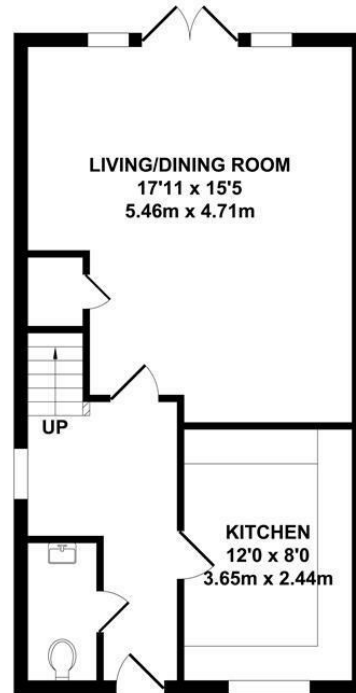
Upstairs the house features two double bedrooms, and one single. The main bedroom has an en-suite. The modern bathroom is conveniently located, providing all the necessary amenities for daily living, with both a bath and shower.

Additionally, the property boasts a driveway with parking, a valuable asset, as well as visitor bays.

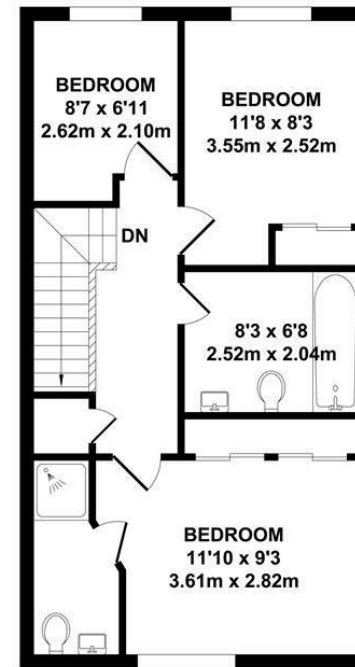
The garden is well maintained and perfect for them summer evenings!

With its convenient location for local schools and delightful features, it is sure to attract those looking for a serene yet accessible living environment. Close to the M2, and M20, its perfect for commuters. Do not miss the opportunity to make this lovely house your new home. Call today to arrange your viewing.





**GROUND FLOOR**  
APPROX. FLOOR AREA  
467 SQ.FT.  
(43.38 SQ.M.)

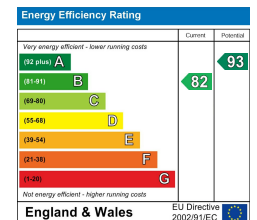


**FIRST FLOOR**  
APPROX. FLOOR AREA  
467 SQ.FT.  
(43.38 SQ.M.)

**TOTAL APPROX. FLOOR AREA 934 SQ.FT. (86.76 SQ.M.)**

Whilst every attempt has been made to ensure the accuracy of the floor plan contained here, measurements of doors, windows, rooms and any other items are approximate and no responsibility is taken for any error, omission or mis-statement. This plan is for illustrative purposes only and should be used as such by any prospective purchaser. The services, systems and appliances shown have not been tested and no guarantee as to their operability or efficiency can be given.

Zome Media ©2025









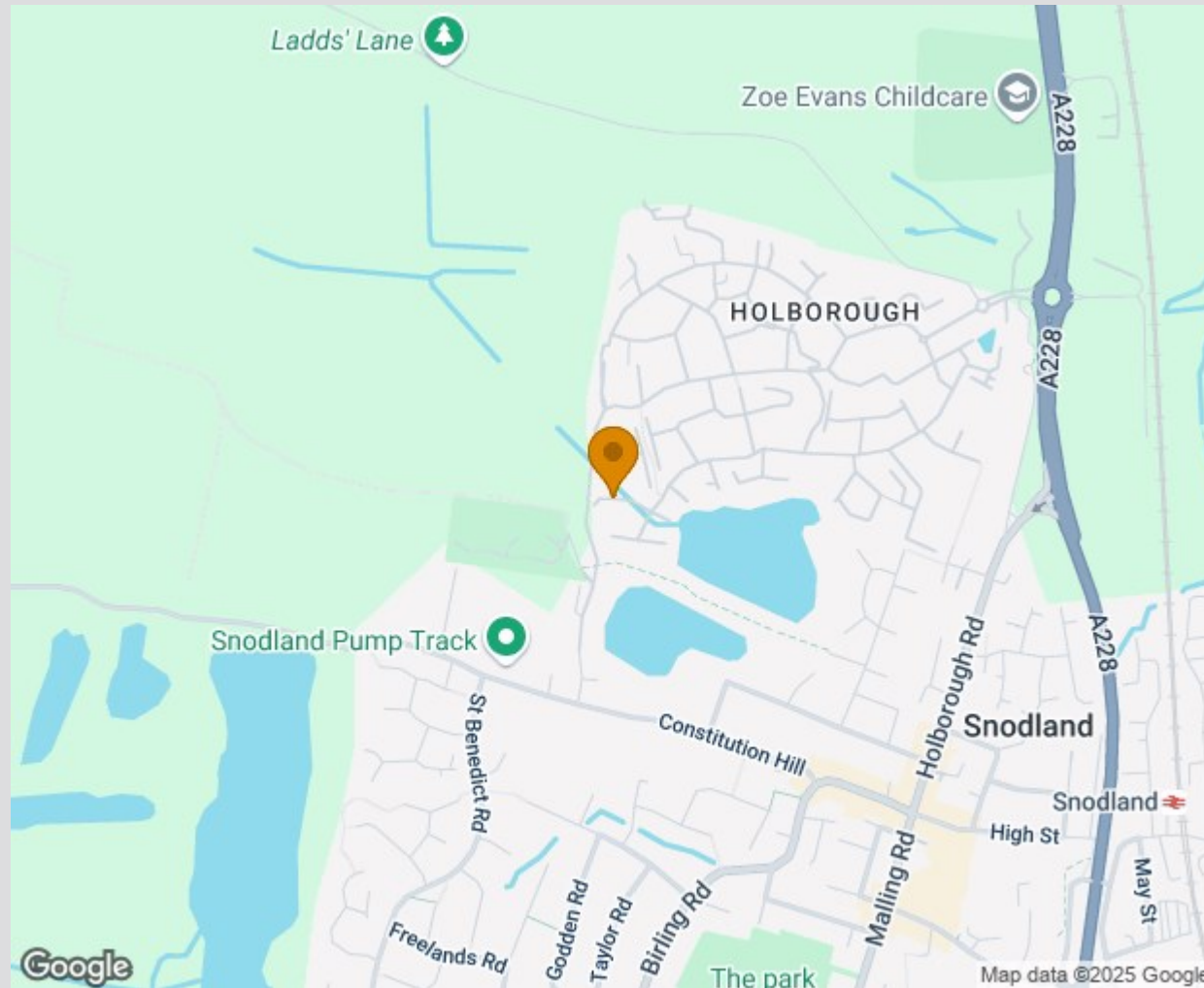




## Location Map

Tenure: Freehold

Council tax band: D



TO VIEW CONTACT: 01622 94 22 22 [allington@khp.me](mailto:allington@khp.me)

[www.khp.me](http://www.khp.me)



**Zoopla.co.uk**  
Smarter property search

