



Ernest Drive

Maidstone ME16 0QS

Offers Over £360,000



COUNTRY HOMES

Maidstone ME16 0QS

We are delighted to introduce this charming 3 bed semi-detached bungalow, situated in the heart of Allington.

This property has endless opportunities to offer. It has 3 bedrooms, two located on the ground floor, and the second on the 1st floor.

It is currently being used as a dining room so can be adapted to your needs. It has a living room with patio doors leading into the garden.

The modern kitchen provides a sensible space for cooking, and the dining room is perfect for entertaining loved ones. The family bathroom is a convenient size, consisting of both a bath and a shower.

This property could have further potential to extend.

It has a garage and driveway.

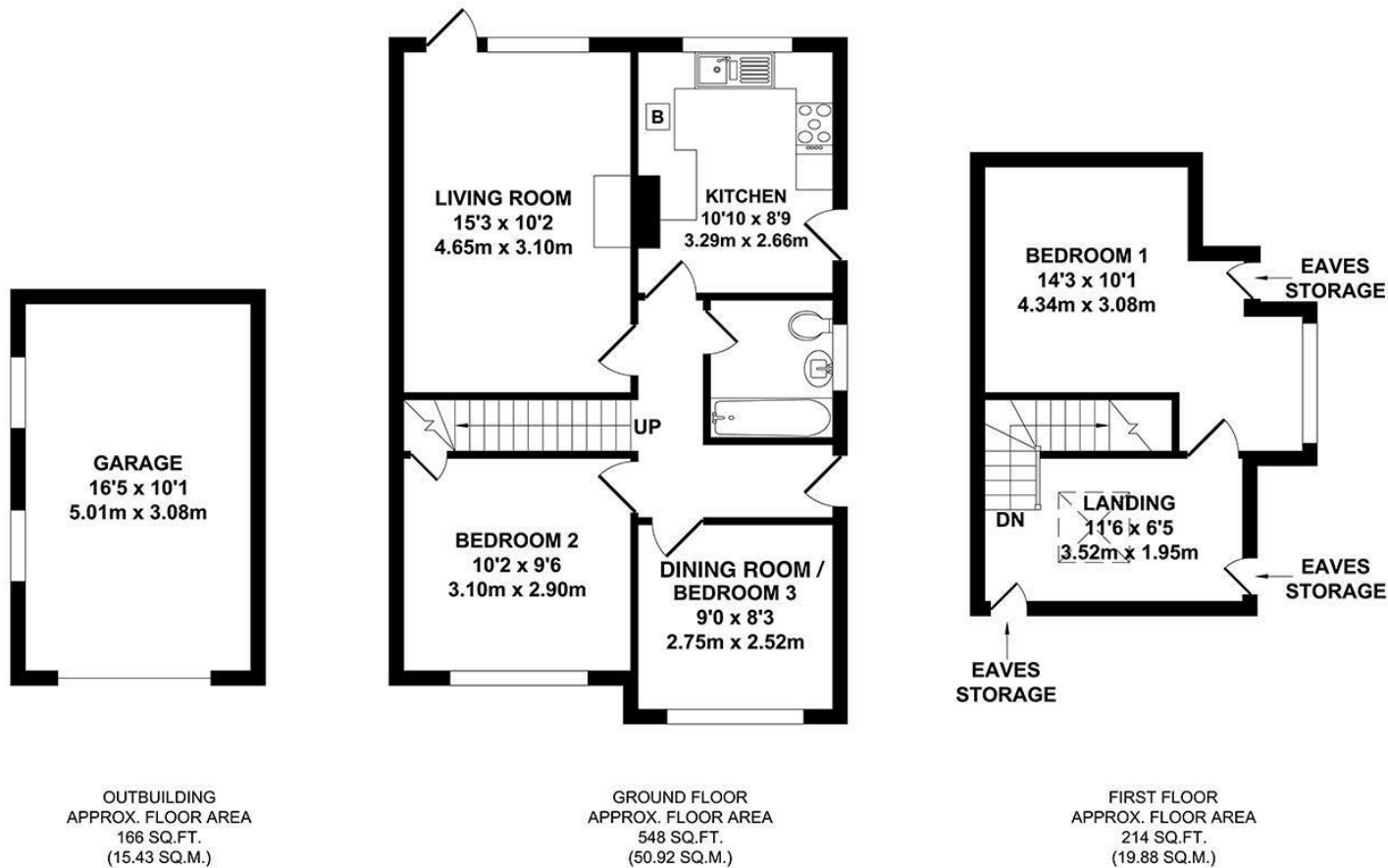
Situated close to outstanding primary schools, Palace wood and Allington. Also within close proximity to Mid Kent Shopping Centre which has a bakery, Waitrose, pharmacy, hairdressers, a fish and chip shop and much more. Your also only a short distance away from both the A20 and the M20, making this the perfect location.

Don't miss out on this beautiful chalet bungalow in the sort after area of Allington.

Call today to arrange your viewing!

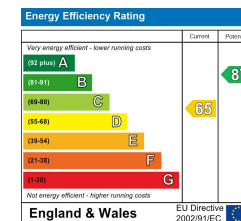
- Close to schools
- On a bus route
- Walking distance to hospital and train station
- Close to shops





Whilst every attempt has been made to ensure the accuracy of the floor plan contained here, measurements of doors, windows, rooms and any other items are approximate and no responsibility is taken for any error, omission or mis-statement. This plan is for illustrative purposes only and should be used as such by any prospective purchaser. The services, systems and appliances shown have not been tested and no guarantee as to their operability or efficiency can be given.

Zome Media ©2025



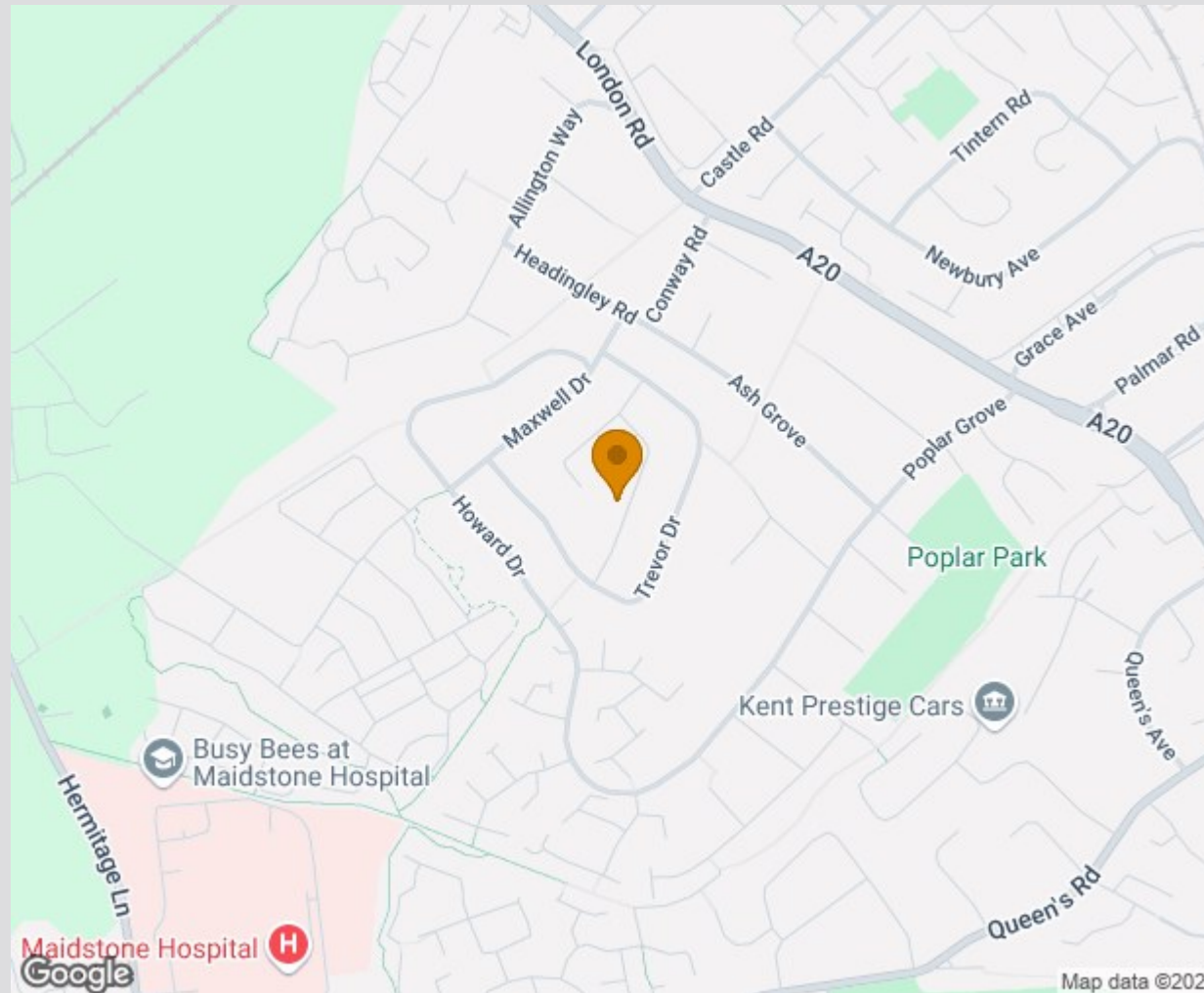




Location Map

Tenure: Freehold

Council tax band: D



TO VIEW CONTACT: 01622 94 22 22 allington@khp.me

www.khp.me



Zoopla.co.uk
Smarter property search

