



Keswick Drive
Maidstone ME16 0DQ
£455,000



COUNTRY HOMES

Maidstone ME16 0DQ

Welcome to this stunning property located in the lovely area of Allington. This modern 3-bedroom semi-detached house offers an open plan modern living space for you and your family.

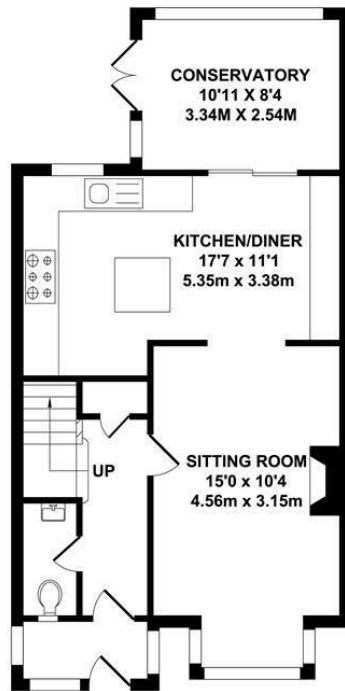
Downstairs offers a WC, hallway leading into the open plan lounge, kitchen/diner and conservatory. This home provides ample space for entertaining guests or simply relaxing with your loved ones. Upstairs boasts three bedrooms and a modern family bathroom providing a bath and shower.

Situated in a peaceful cul-de-sac, this home offers a tranquil environment, perfect for unwinding after a long day. With parking available for two vehicles, you'll never have to worry about finding a spot for your car.

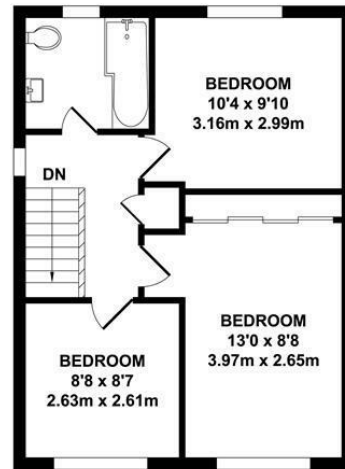
The property's proximity to well respected primary schools, Palace Wood and Allington making it an ideal choice for families with young children, ensuring a stress-free school run each day.

This well-presented property in Allington is a fantastic opportunity for anyone looking for a comfortable and convenient place to call home. Don't miss out on the chance to make this lovely house your own! Call now to arrange your viewing.

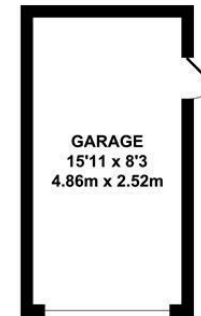




GROUND FLOOR
APPROX. FLOOR AREA
564 SQ.FT.
(52.37 SQ.M.)



FIRST FLOOR
APPROX. FLOOR AREA
428 SQ.FT.
(39.79 SQ.M.)

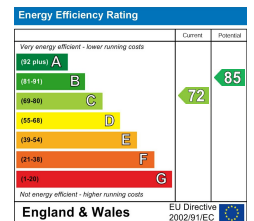


OUTBUILDING
APPROX. FLOOR AREA
132 SQ.FT.
(12.25 SQ.M.)

TOTAL APPROX. FLOOR AREA 1124 SQ.FT. (104.41 SQ.M.)

Whilst every attempt has been made to ensure the accuracy of the floor plan contained here, measurements of doors, windows, rooms and any other items are approximate and no responsibility is taken for any error, omission or mis-statement. This plan is for illustrative purposes only and should be used as such by any prospective purchaser. The services, systems and appliances shown have not been tested and no guarantee as to their operability or efficiency can be given.

Zome Media ©2024



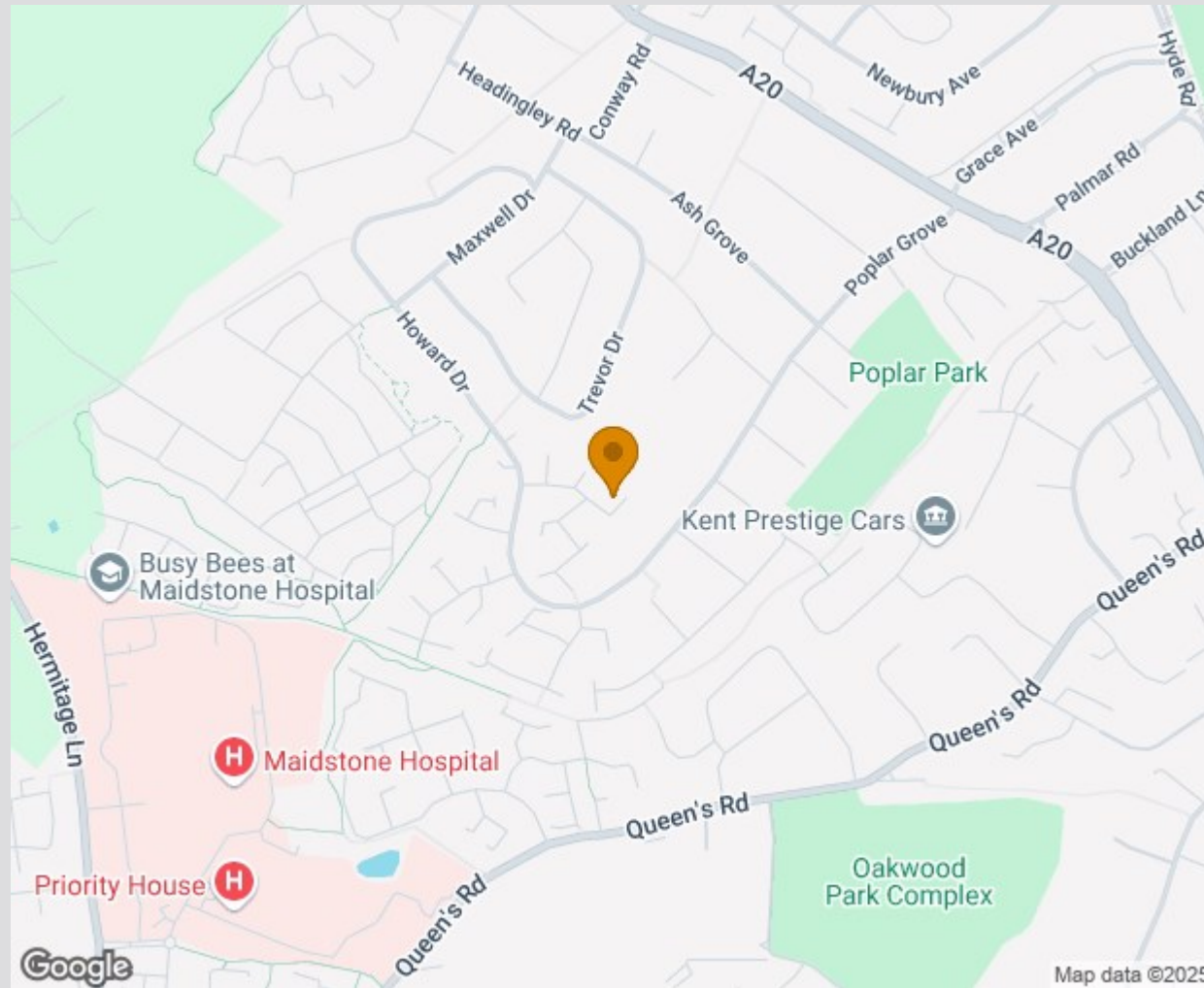




Location Map

Tenure: Freehold

Council tax band: E



TO VIEW CONTACT: 01622 94 22 22 allington@khp.me

www.khp.me



Zoopla.co.uk
Smarter property search

