



Brighton Road, Lower Kingwood
Offers in the region of £575,000





“

This has been our family home for the last 13 years and we've loved every minute here. We love opening the sliding doors and hearing birdsong and relaxing with a cool drink in the garden. We hope you enjoy it as much as we have

”



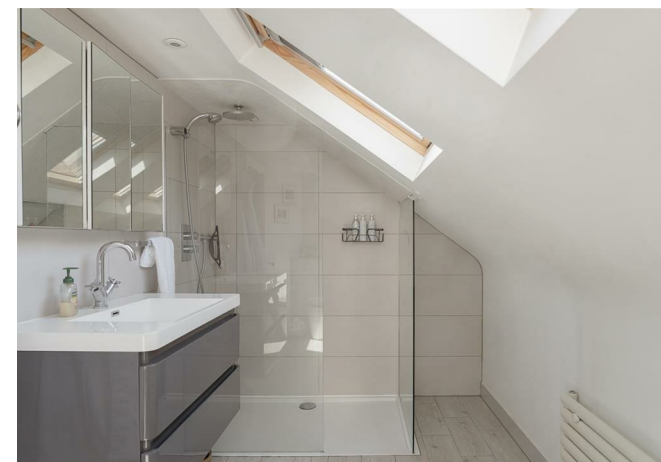
We are very proud to market this beautiful property in Lower Kingwood, this semi-detached house offers a perfect blend of modern living and convenience being only a few minutes walk to the local primary school and only a short distance to both Banstead and Reigate.

The property has been thoughtfully extended to provide three double bedrooms, with the primary suite located on the top floor and boasting its own ensuite shower room and a dressing area.

Showcasing a high-end finish throughout. The ground floor has been designed with the family in mind benefitting from a stunning kitchen/family space leading out to the landscaped garden with direct access to acres of open green space and woodland.

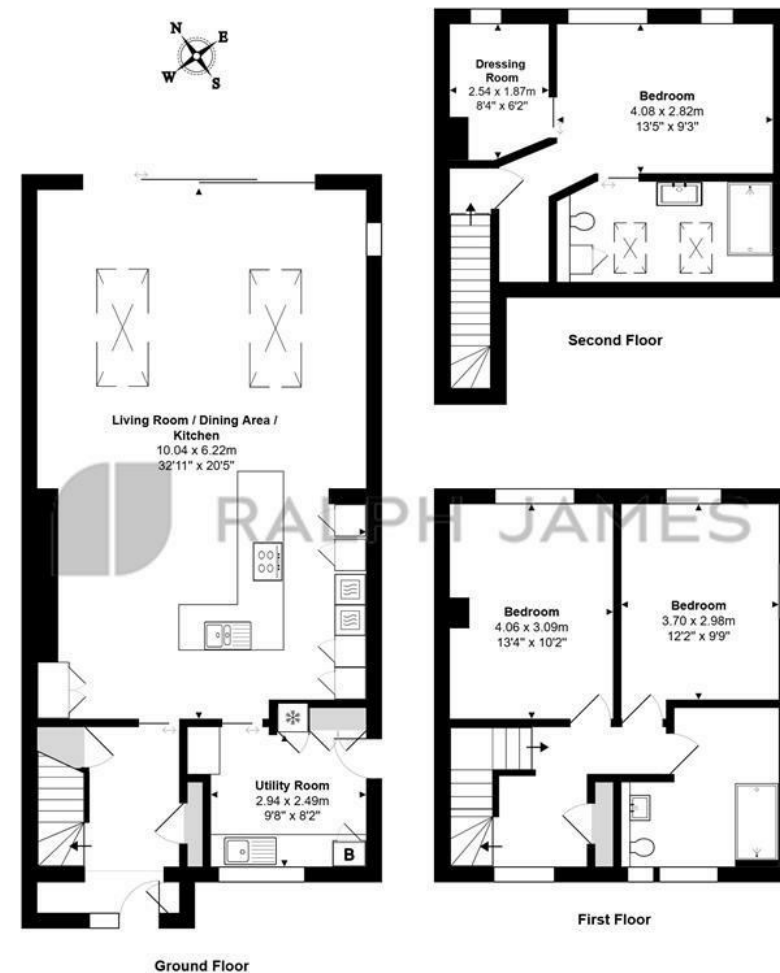
Additional features of this remarkable home include a well proportioned utility room at the front and a driveway that accommodates up to three cars, complete with an electric car charging point.

Its not often you come across a house that has been soo well renovated especially at this price point, this is home that the new owners can truly enjoy.



Need to know

- Beautifully renovated three double bedroomed semi-detached property
- Primary suite to the top floor boasts a shower room and dressing area
- Stunning kitchen/family space to the rear
- High end finish throughout
- Large utility room
- Driveway for three cars with the added benefit of an electric car charging point
- Only a few minutes walk from the local Kingswood Village Primary School
- Close to both Banstead and Reigate



Interested?

banstead@ralphjames.co.uk
01737 371 700

ralphjames.co.uk

Brighton Road, Lower Kingswood

Total Area: 156.2 m² ... 1681 ft²

FOR ILLUSTRATIVE PURPOSES ONLY.

All measurements are approximate and for display purposes only

Whilst every attempt has been made to ensure the accuracy of the floor plan shown, all measurements, positioning, fixtures, features, fittings and any other data shown are an approximate interpretation for illustrative purposes only and are not to scale.

No responsibility is taken for any error, omission, miss-statement or use of data shown.

The above statement applies to both 'Still Moving London LTD' and the Company or individual displaying this floor plan.

Unauthorised reproduction prohibited.

© Still Moving London LTD (www.stillmoving.london)

RALPH JAMES