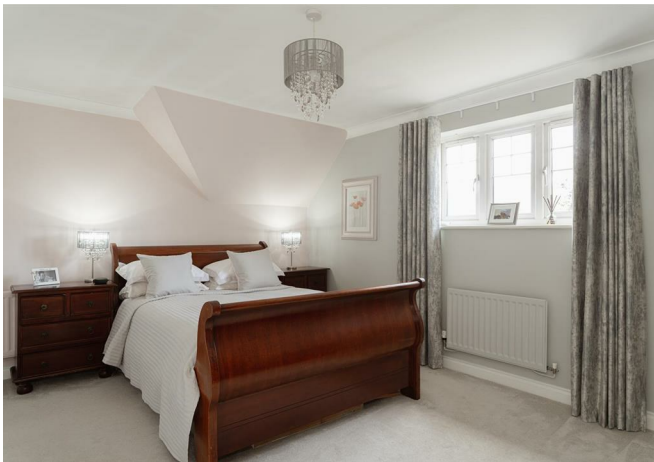




Kingswood Grange, Lower Kingswood  
£550,000







This exceptionally designed property boasts three bedrooms and three bathrooms, offering more space than your average three bedroom family home its a great option for professionals and families alike





Larger than the average three bedroom house with over 1800sqft of valuable space (including an abundance of storage) this stunning Penthouse must be viewed. It wouldn't be an obvious choice for the family market however it should be as it offers great value for money and much more space than you would find in the equivalent house.

Set within the exclusive gated development of Kingswood Grange, this penthouse apartment boasts its own private terrace looking out to fields and woodland, has three double bedrooms and three well-appointed bathrooms with the Primary having its own dressing room and large en-suite, this property will suit both families and professionals.

The apartment has been completely refurbished by a talented interior designer, giving a design-led finish. The property offers a substantial 1800sqft to include ample eaves storage accessible from most rooms and the private terrace.

Conveniently located close to Kingswood Village, residents will find a variety of local amenities just a short distance away, including shops, cafes, and the Kingswood Station. The property also benefits from allocated parking and visitor spaces.

This penthouse apartment is a rare find, combining modern elegance with a tranquil setting, making it an exceptional choice for those looking to enjoy the best of both worlds. Don't miss the opportunity to make this exquisite property your new home.





## Need to know

- Private gated development with entry phone system to the front of the building
- Three bedrooms and three bathrooms
- Dressing room and en-suite to the primary bedroom
- Completely private terrace overlooking the communal gardens with undisturbed views over woodland and open fields to the rear
- Close to Kingswood Village and train station
- Beautifully designed throughout by a professional interior designer
- New kitchen
- Allocated parking with additional visitor bays
- Vendor suited



### Second Floor

Kingswood Grange, Babylon Lane, Kingswood, Tadworth

Total Area: 168.4 m<sup>2</sup> ... 1813 ft<sup>2</sup> (including eaves storage, excluding terrace)

FOR ILLUSTRATIVE PURPOSES ONLY

All measurements are approximate and for display purposes only

Whilst every attempt has been made to ensure the accuracy of the floor plan shown, all measurements, positioning, fixtures, features, fittings and any other data shown are an approximate interpretation for illustrative purposes only and are not to scale.

No responsibility is taken for any error, omission, miss-statement or use of data shown.

The above statement applies to both 'Still Moving London LTD' and the Company or individual displaying this floor plan.

Unauthorised reproduction prohibited.

© Still Moving London LTD (www.stillmoving.london)

 RALPH JAMES

## Interested?

banstead@ralphjames.co.uk  
01737 371 700

#

ralphjames.co.uk