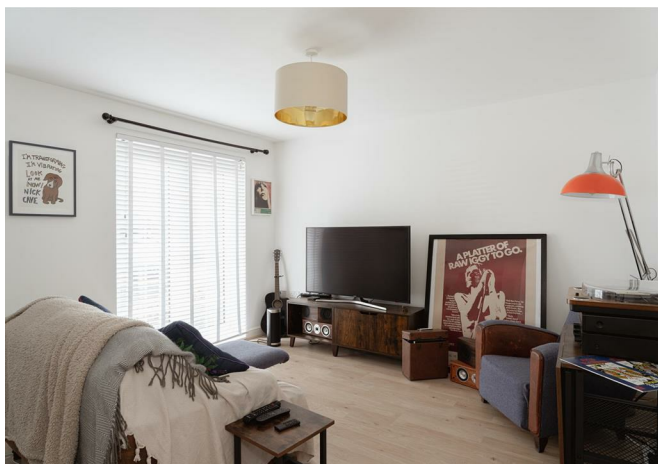




Beckett Road, Coulsdon

£275,000

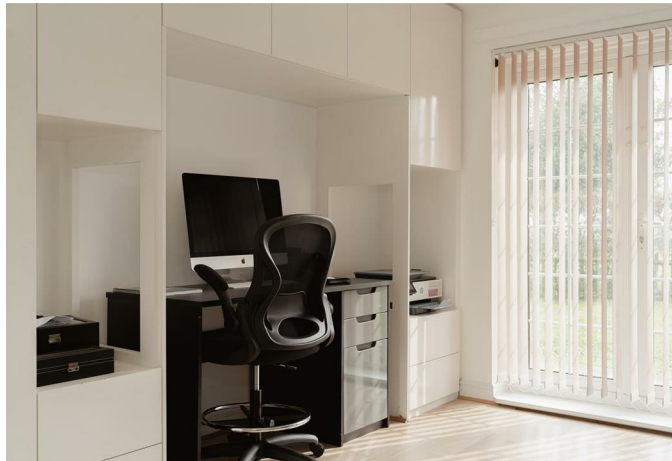




“

Lovely two bedroom apartment on the ground floor, this property presents a great investment opportunity. The current owners have kept the property presented well and offer the property to the market chain free.

”



*** No Chain *** This modern two-bedroom, ground floor apartment on Beckett Road offers a delightful living experience within the well-maintained development of Netherne on the Hill. This property is perfect for those seeking a blend of comfort and community, surrounded by acres of woodland and open green space.

Residents of Netherne enjoy a wealth of amenities, including the swimming pool and gym in the converted church, tennis courts, a local shop, a play park, and a cricket green, all contributing to a vibrant community spirit. For those who appreciate an active lifestyle.

The apartment features a spacious reception room with an open plan feel making the most of the space. The two well-proportioned bedrooms offer ample space for rest and privacy, while the well-appointed bathroom is conveniently located to serve both bedrooms.

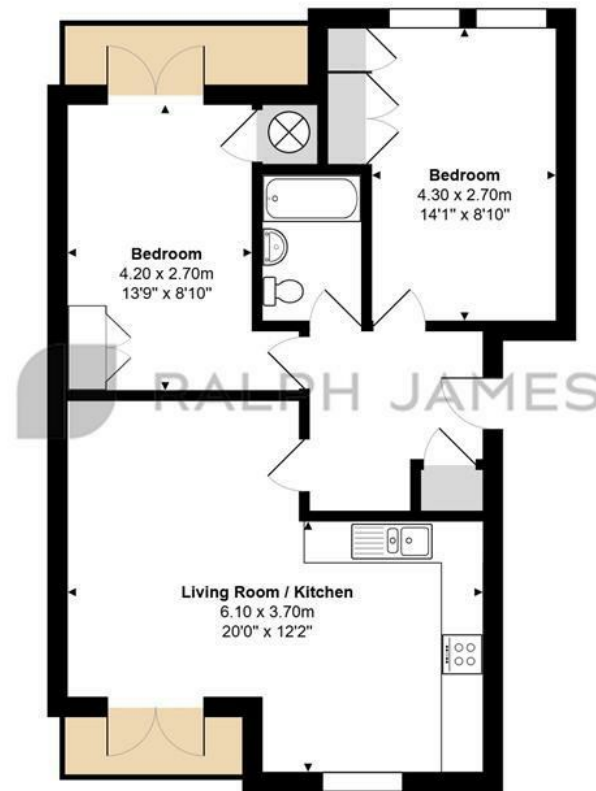
The current owners have successfully rented the property, highlighting its potential as a sound investment opportunity. Additionally, the apartment is situated within the catchment area for local schools, making it an ideal choice for small families.

In summary, this apartment on Beckett Road presents a unique opportunity to enjoy modern living in a picturesque setting, with a strong sense of community and excellent local amenities.



Need to know

- Beautifully maintained and well presented 2 bedroom apartment
- Well appointed kitchen and bathroom
- Access to all the benefits the development has to offer
- Acres of wide open green space to enjoy at your leisure
- Local on-site shop for your day to day needs
- Swimming pool and Gym on site exclusively for residents use
- Self contained, community driven development
- Allocated parking
- Chain free
- Great investment opportunity



Beckett Road, Netherne on the Hill

Total Area: 63.9 m² ... 688 ft² (excluding balcony)

FOR ILLUSTRATIVE PURPOSES ONLY.

Whilst every attempt has been made to ensure the accuracy of the floor plan shown, all measurements, positioning, fixtures, features, fittings and any other data shown are an approximate interpretation for illustrative purposes only and are not to scale.

No responsibility is taken for any error, omission, miss-statement or use of data shown.

The above statement applies to both 'Still Moving London LTD' and the Company or individual displaying this floor plan.

Unauthorised reproduction prohibited.

Â© Still Moving London LTD (www.stillmoving.london)

Interested?

banstead@ralphjames.co.uk
01737 371 700

ralphjames.co.uk

