



Woodland Way, Tadworth

£3,000,000





“

Located on the highly desired Kingswood estate in Surrey is this substantial and cleverly designed seven bedroom detached family home, a perfect layout and size for families looking to grow into their new home, whilst having the exclusivity and privacy that the area and position offers.

”



Situated in the prestigious Kingswood estate on Woodland Way, this substantial detached family home offers a luxurious lifestyle for those seeking space and comfort. Boasting four reception rooms, seven bedrooms, and four bathrooms, this property is perfect for those looking for a blend of elegance and practicality.

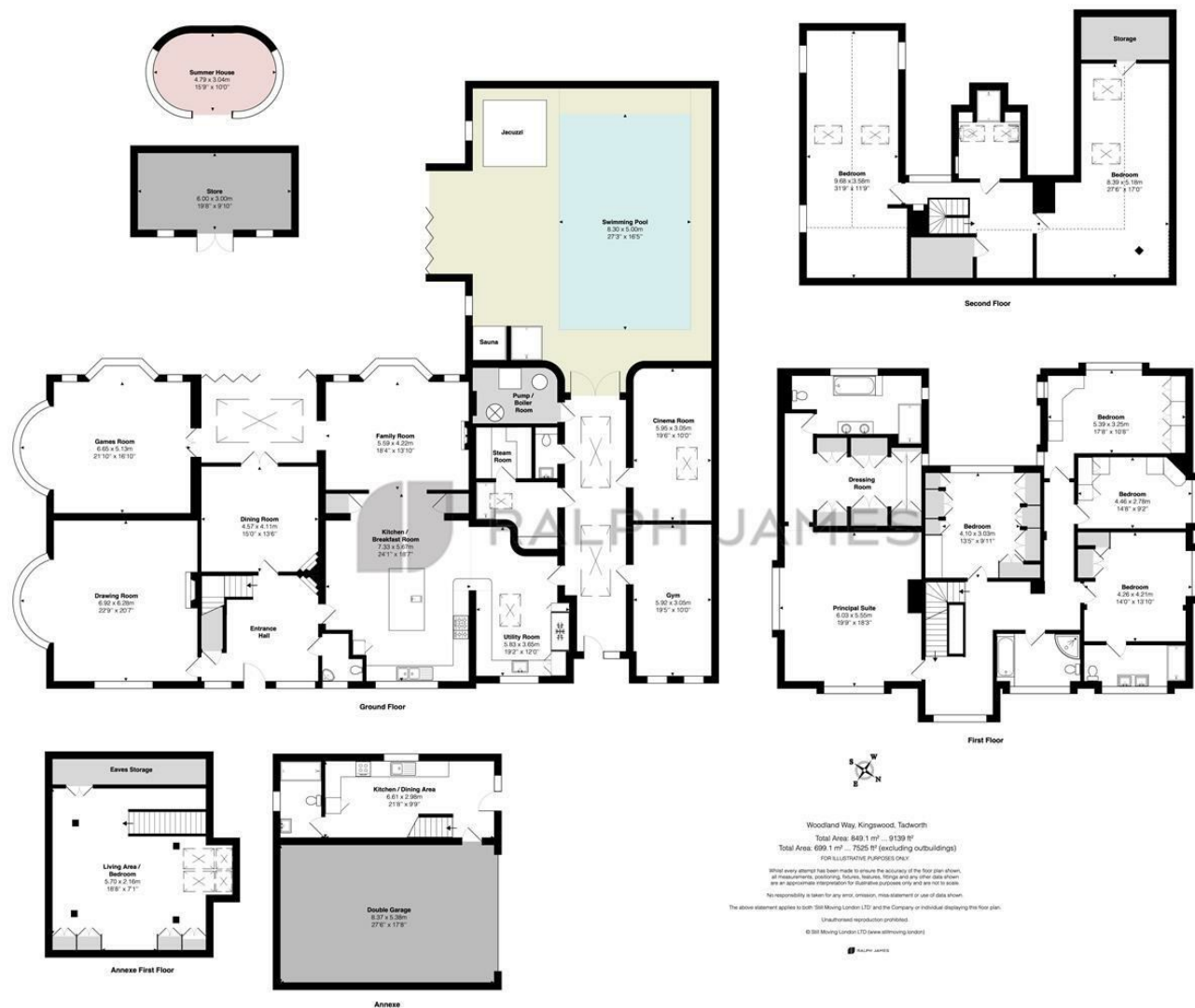
The highlight of this property is the detached one-bedroom annexe, providing additional space for guests or as a private retreat. Imagine hosting friends and family in this exclusive setting, complete with leisure facilities such as a heated pool, sauna, gymnasium, and wet room.

The open plan kitchen dining room is ideal for entertaining, with a separate utility space for added convenience. The property also features a carriage driveway and a triple garage, ensuring ample parking space for you and your guests.



Need to know

- Situated on the exclusive and private Kingswood Estate.
- Substantial 7 bedroom detached family home.
- Detached one bedroom annexe with kitchen and shower room.
- Indoor heated pool, sauna, hot tub, steam room and shower.
- Gym, Cinema room and games room.
- Open plan kitchen / dining space with separate utility area.
- Carriage driveway for ample parking with triple garage.
- Five receptions rooms boasting original character features.
- Short distance to Kingswood Village and train station.
- Landscaped front and rear gardens boasting a modern crown pavilion.



Interested?

banstead@ralphjames.co.uk
 01737 371 700

ralphjames.co.uk