



The Tracery, Banstead  
£400,000







The Tracery is a beautiful building that has been converted to lovely apartments just steps away from the High Street and all the Village has to offer. Our vendors are offering this 3 bedroom top floor apartment on a chain free basis.





Welcome to The Tracery in Banstead! This 3-bedroom top floor flat is a hidden gem just a stone's throw away from the bustling Banstead Village High Street and is being offered chain free.

Step inside this well-maintained building and be greeted by the convenience of a lift, the property boasts an en-suite bathroom in the primary bedroom, for additional privacy.

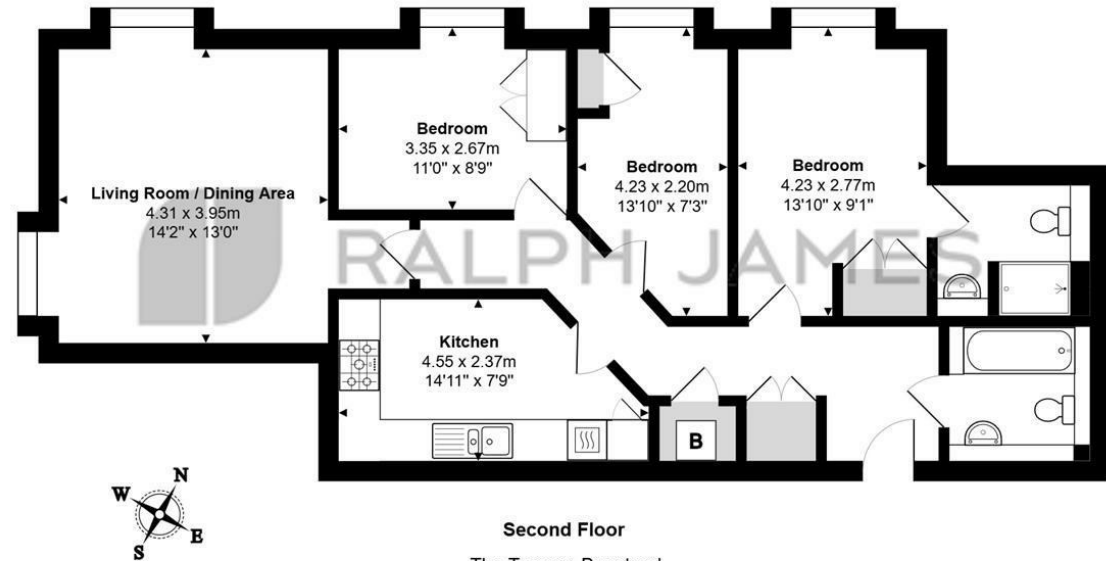
This flat comes with allocated parking, ensuring you always have a spot waiting for you. You also have the use of communal gardens in addition to Banstead Park being only a couple of minutes away.

Don't miss out on the opportunity to make this delightful property your new home. With its prime location, modern amenities, and peaceful surroundings this property should be on anyone's viewing list.



## Need to know

- Three bedroom apartment.
- Top floor of a well maintained block.
- Spacious lounge / dining room.
- Separate kitchen with integral appliances.
- En-suite to primary bedroom.
- Beautifully cared for communal gardens.
- Allocated parking.
- Stones throw from Banstead High Street.
- No ongoing chain.
- Leasehold.



Whilst every attempt has been made to ensure the accuracy of the floor plan shown, all measurements, positioning, fixtures, features, fittings and any other data shown are an approximate interpretation for illustrative purposes only and are not to scale.

No responsibility is taken for any error, omission, miss-statement or use of data shown.

The above statement applies to both 'Still Moving London LTD' and the Company or individual displaying this floor plan.

Unauthorised reproduction prohibited.

© Still Moving London LTD (www.stillmoving.london)

## Interested?

banstead@ralphjames.co.uk  
01737 371 700

#

ralphjames.co.uk

