



# Sandersfield Road, Banstead

£735,000



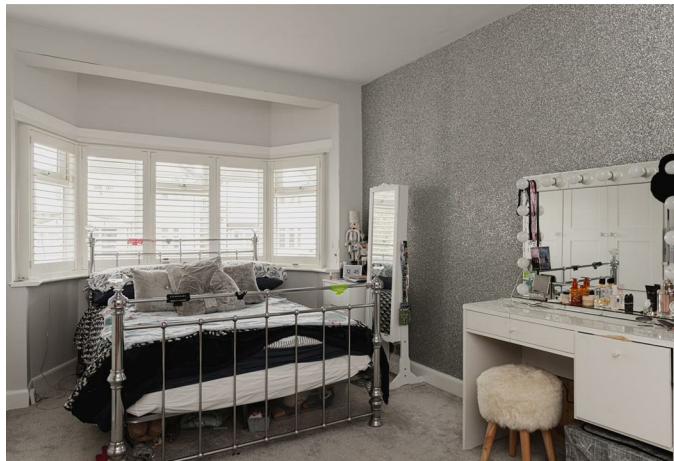




A perfect example of modern family living located at the Heart of the ever popular Banstead Village creating an ideal blend of convenience and privacy.







Nestled on Sandersfield Road in the charming village of Banstead, this immaculately presented mid-terrace house is a true gem. Boasting two reception rooms, five bedrooms, and two bathrooms spread across 1,722 sq ft, this property offers ample space for comfortable living.

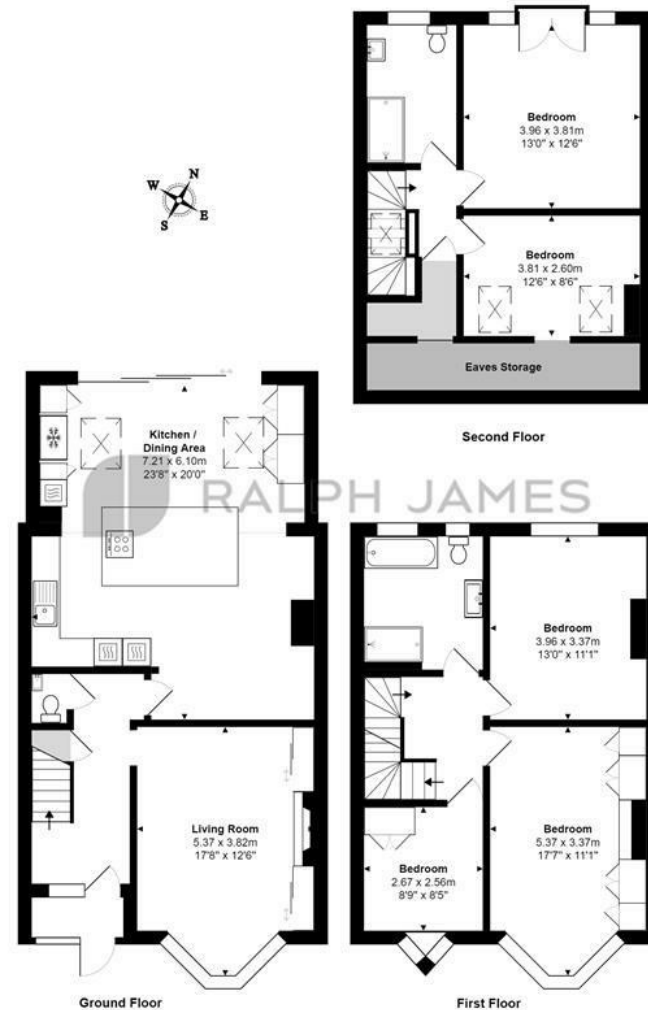
Built in 1930, this home seamlessly blends classic charm with modern amenities. The stunning open plan kitchen dining room is a highlight, featuring bi-fold doors that flood the space with natural light and create a seamless indoor-outdoor living experience.

Located at the heart of Banstead village, residents will enjoy easy access to local amenities, schools, and transport links. The property also offers beautiful views towards the iconic skyline of London, adding a touch of urban sophistication to this suburban retreat.

Whether you're looking for a family home with plenty of room to grow or a stylish space to entertain guests, this property on Sandersfield Road is sure to impress.

# Need to know

- Beautifully presented home.
- Five bedrooms.
- Stunning open plan kitchen dining room.
- Separate lounge.
- Two modern bathrooms.
- Private garden with views towards London.
- Excellent school catchment.
- Close to local transport links and shops.
- Right at the heart of Banstead Village.
- Double private driveway.



## Interested?

banstead@ralphjames.co.uk  
01737 371 700

ralphjames.co.uk

Sandersfield Road, Banstead  
Total Area: 172.4 m<sup>2</sup> ... 1855 ft<sup>2</sup>  
FOR ILLUSTRATIVE PURPOSES ONLY.

Whilst every attempt has been made to ensure the accuracy of the floor plan shown, all measurements, positioning, fixtures, features, fittings and any other data shown are an approximate interpretation for illustrative purposes only and are not to scale.

No responsibility is taken for any error, omission, mis-statement or use of data shown.

The above statement applies to both 'Still Moving London LTD' and the Company or individual displaying this floor plan.

Unauthorised reproduction prohibited.

© Still Moving London LTD (www.stillmoving.london)

 RALPH JAMES