



Springhurst Close, Croydon

£1,600,000

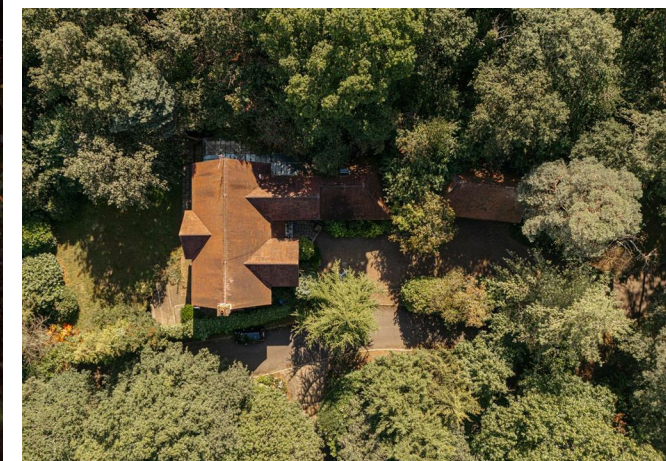




“

A wonderful opportunity to acquire a substantial family home in a highly desirable private close situated opposite Addington golf club and siding onto the open spaces of Shirley woods.

”



Welcome to this exquisite property located on Springhurst Close in the charming area of Croydon. This substantial five-bedroom detached home boasts three reception rooms and three bathrooms, providing ample space for comfortable living.

Situated on a private road opposite the prestigious Addington Golf Club and backing onto the serene Shirley Woods, this property offers a perfect blend of luxury and tranquillity. The detached triple coach house garage adds a touch of elegance and convenience to this already impressive residence.

With no ongoing chain, this property is ready to become your dream home without any delays. Don't miss the opportunity to own a piece of paradise in this desirable location.

Contact us today to arrange a viewing and experience the grandeur and sophistication that this stunning detached house has to offer.

Need to know

- Detached family home.
- Five well-proportioned bedrooms.
- Three large reception rooms.
- Open plan kitchen/diner linking to a spacious conservatory space.
- Huge potential to modernise.
- Detached coach house triple garage.
- Siding onto Shirley woods with direct access.
- No ongoing chain.
- Private cul-de-sac opposite Addington Golf Club.
- Freehold.



Interested?

banstead@ralphjames.co.uk
01737 371 700

ralphjames.co.uk

Springhurst Close, Croydon
Total Area: 396.4 m² ... 4267 ft² (excluding multi-car garage)
FOR ILLUSTRATIVE PURPOSES ONLY.
Whilst every attempt has been made to ensure the accuracy of the floor plan shown, all measurements, positioning, fixtures, features, fittings and any other data shown are an approximate interpretation for illustrative purposes only and are not to scale.
No responsibility is taken for any error, omission, mis-statement or use of data shown.
The above statement applies to both: Sell Moving London LTD and the Company or individual displaying this floor plan.
Unauthorized reproduction prohibited.
© Sell Moving London LTD (www.sellmoving.london)

