



# Yew Tree Close, Chipstead

£750,000







“

A very special family home in a cul-de-sac setting in the ever popular Chipstead, the current owner has thoughtfully upgraded every room making this a must see for any family.

”





Nestled in the charming Yew Tree Close of Chipstead, this beautifully finished and thoughtfully extended end-terrace house is a true gem waiting to be discovered. Boasting three reception rooms, four bedrooms, and two bathrooms across a spacious 2,045 sq ft, this 1950s property offers ample space for comfortable living.

The unassuming frontage belies what lays behind the doors with the current owner having modernised and upgraded every room. The property's unique chalet style bungalow design adds character and charm, making it stand out from the rest. The hidden en-suite and dressing area in the primary bedroom provide a touch of luxury and privacy, perfect for unwinding after a long day.



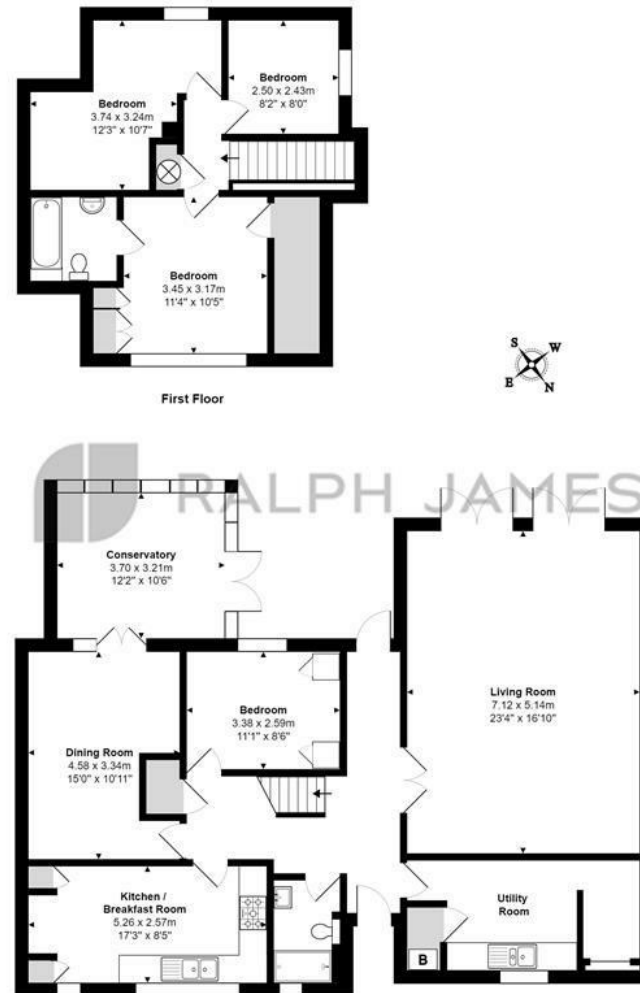
Situated in a quiet cul-de-sac with a pretty green to the front and a very generous, sunny rear garden, tranquillity and peace are guaranteed, offering a serene escape from the hustle and bustle of everyday life. Additionally, being only a 10-minute stroll away from Chipstead station and local shops, convenience is at your doorstep.

Whether you're looking for a spacious family home or a peaceful retreat, this property ticks all the boxes. Don't miss the opportunity to make this house your home sweet home in the heart of Chipstead.



## Need to know

- Only 10 mins walk to Chipstead Station and the local parade of shops
- Fully redecorated and upgraded throughout
- 4 bedrooms with hidden en-suite and dressing area to primary
- Generous family room overlooking the rear garden
- Quiet cul-de-sac location
- Driveway parking plus additional allocated parking
- A stones throw from Chipstead Golf Course
- Surrounded by open green space
- Generous, private rear garden with large decked area
- Freehold



## Interested?

banstead@ralphjames.co.uk  
01737 371 700

ralphjames.co.uk

**Ground Floor**  
Yew Tree Close, Chipstead, Coulsdon  
Total Area: 166.1 m<sup>2</sup> ... 1788 ft<sup>2</sup>  
FOR ILLUSTRATIVE PURPOSES ONLY.

Whilst every attempt has been made to ensure the accuracy of the floor plan shown, all measurements, positioning, fixtures, features, fittings and any other data shown are an approximate interpretation for illustrative purposes only and are not to scale.

No responsibility is taken for any error, omission, mis-statement or use of data shown.

The above statement applies to both 'Still Moving London LTD' and the Company or individual displaying this floor plan.

Unauthorised reproduction prohibited.

© Still Moving London LTD (www.stillmoving.london)

 RALPH JAMES