



Copleigh Drive, Tadworth

£800,000

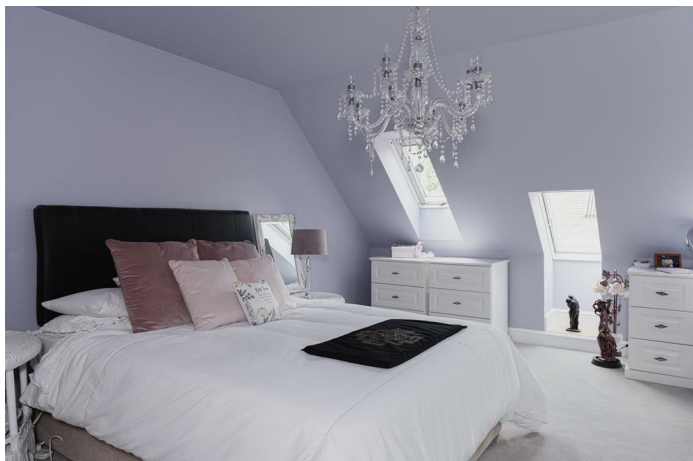




“

Lovely, modern 4 bedroomed chalet style bungalow designed for flexible living - close to all local amenities and open green space.

”



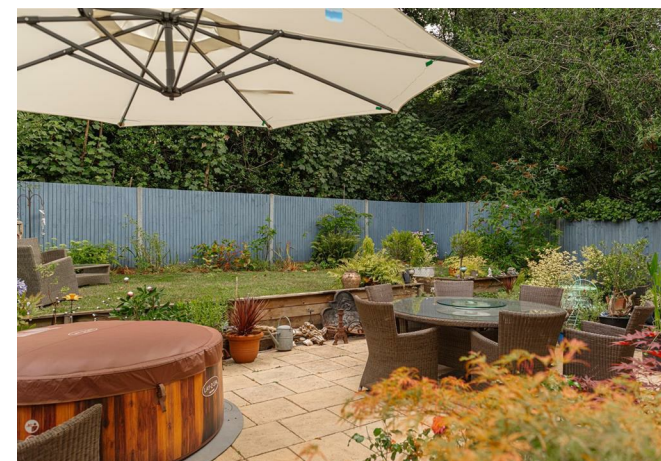
Welcome to this stunning 4-bedroom detached house located on Copleigh Drive in the charming area of Kingswood, Tadworth. This 12-year-old property boasts a unique design as a 4-bedroom chalet bungalow, offering a sense of character and style.

One of the highlights of this beautiful home is the ensuite bathroom attached to the primary bedroom, providing convenience and privacy. The property also features a spacious driveway with parking space for multiple cars, ensuring that you and your guests will never have to worry about finding a parking spot. Another huge benefit to any family will be the well thought out utility space and garage to the side of the property offering additional parking or ample storage.



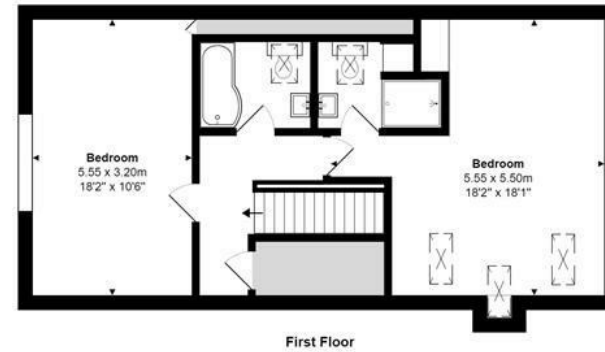
As you step inside, you will be greeted by fresh and modern decor that runs throughout the house, creating a bright and welcoming atmosphere. The interior design is both stylish and functional, offering a comfortable living space for you and your family to enjoy.

Whether you are looking for a peaceful retreat or a place to entertain friends and family, this property has it all. Don't miss out on the opportunity to make this house your home and experience the best of what Kingswood and Tadworth have to offer.



Need to know

- Fresh, modern 4 bedroomed chalet style bungalow
- Flexible living with 2 x doubles upstairs and 2 further bedrooms downstairs
- En-suite to primary with the benefit of 2 further bath/shower rooms
- Located within walking distance of the local Supermarket and nearby amenities
- Pretty, secluded garden surrounded by mature trees
- Easily accessible to acres of open greenspace
- Well thought out utility room
- Garage to the side of the property
- Driveway parking for multiple cars
- EPC - B Council Tax - Band G



Copleigh Drive, Lower Kingswood
Total Area: 162.5 m² ... 1749 ft²

FOR ILLUSTRATIVE PURPOSES ONLY:

Whilst every attempt has been made to ensure the accuracy of the floor plan shown, all measurements, positioning, fixtures, features, fittings and any other data shown are an approximate interpretation for illustrative purposes only and are not to scale.

No responsibility is taken for any error, omission, miss-statement or use of data shown.

The above statement applies to both 'Still Moving London LTD' and the Company or individual displaying this floor plan.

Unauthorised reproduction prohibited.

© Still Moving London LTD (www.stillmoving.london)



Interested?

banstead@ralphjames.co.uk
01737 371 700

ralphjames.co.uk