



9 North Street, Leatherhead

£1,000 Per Month





“

Stocks House offers stylish apartments in Leatherhead's heart, featuring high-end kitchens, tiled bathrooms, and oak flooring. Amenities include a lift, video entry system, and Anytime Fitness below. It's close to shops, restaurants, and Leatherhead Train Station for London access.

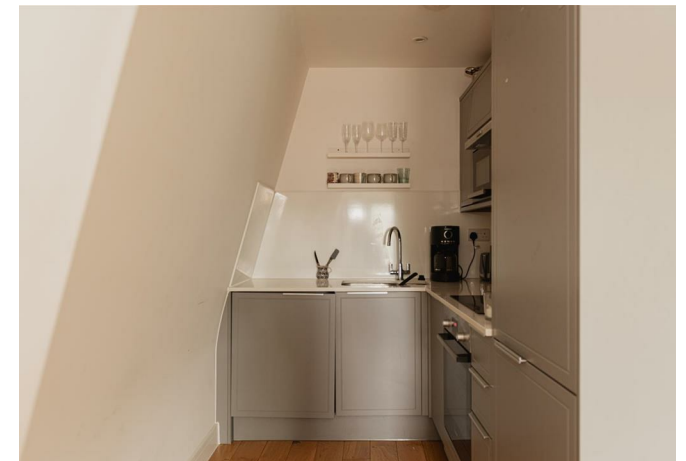
”



Stocks House presents an outstanding collection of stylish apartments located in the heart of Leatherhead. Each unit, including this studio apartment, is designed for flexible living with premium finishes. The contemporary kitchen features granite work surfaces and integrated appliances. Bathrooms are fully tiled, and the apartments boast engineered oak flooring throughout.

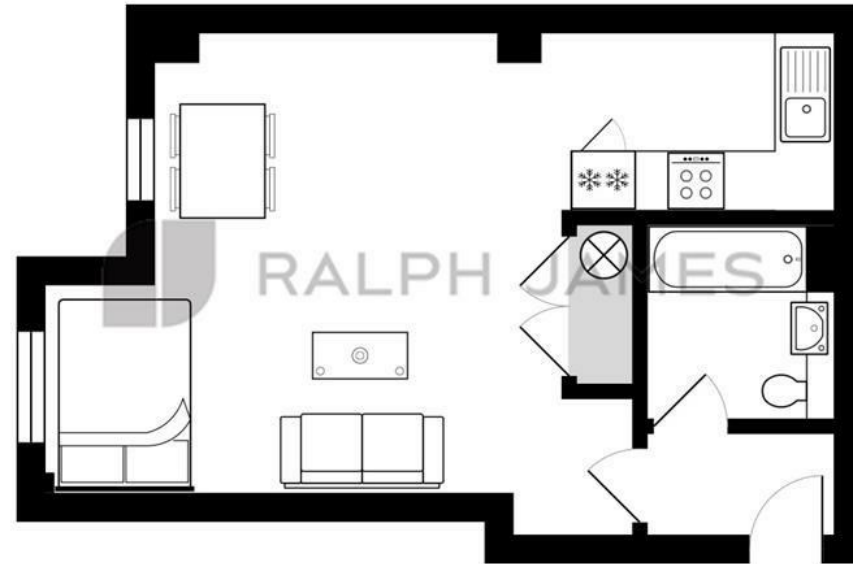
Key amenities include a convenient lift servicing all floors and a secure video entry system. For fitness enthusiasts, Anytime Fitness is conveniently located below the development, making workouts easily accessible.

Residents will appreciate the proximity to Leatherhead's vibrant centre, offering a variety of shops, restaurants, and amenities. Leatherhead Train Station is just a short walk away, providing regular services to London Waterloo Station in approximately 46 minutes. The town also features a leisure centre, a theatre, and supermarkets like Waitrose and Sainsbury's, ensuring all your needs are met close to home.



Need to know

- Stylish studio in the heart of Leatherhead
- High-end kitchen with granite work surface and integrated appliances
- Fully furnished
- Engineered oak flooring throughout
- Convenient lift servicing all floors
- Secure video entry system
- Anytime Fitness located below the development
- Close to shops, restaurants, and Leatherhead Train Station with regular London services
- EPC: C
- Council: B



Third Floor

Stocks House, North Street, Leatherhead

Total Area: 37.1 m² ... 400 ft²

FOR ILLUSTRATIVE PURPOSES ONLY.

Whilst every attempt has been made to ensure the accuracy of the floor plan shown, all measurements, positioning, fixtures, features, fittings and any other data shown are an approximate interpretation for illustrative purposes only and are not to scale.

No responsibility is taken for any error, omission, miss-statement or use of data shown.

The above statement applies to both 'Still Moving London LTD' and the Company or individual displaying this floor plan.

Unauthorised reproduction prohibited.

Â© Still Moving London LTD (www.stillmoving.london)



Interested?

banstead@ralphjames.co.uk
01737 371 700

#

ralphjames.co.uk