



Upland Way, Epsom

Price range £525,000 to £525,000





“

Three double bedroom home requiring modernisation located in a popular quiet road in highly desired Epsom Downs area.

”



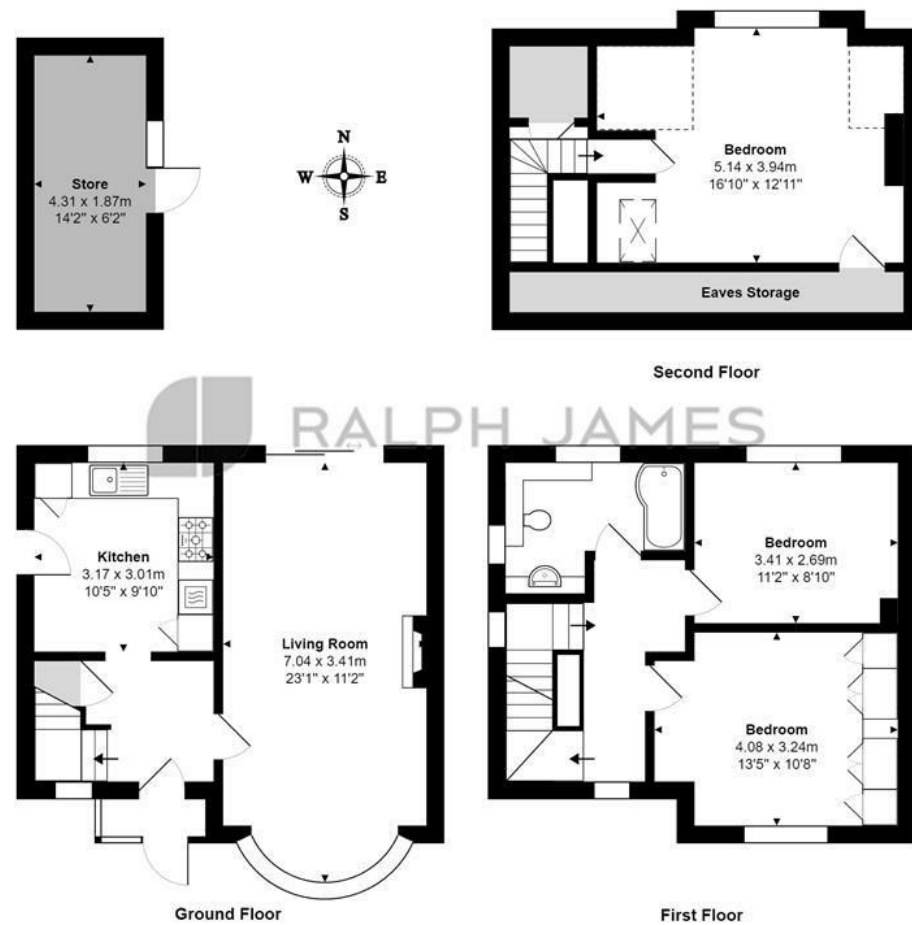
** Guide price
£500,000 - £525,000 **

Located in a highly popular residential road on the outskirts of the famous Epsom Downs is this three double bedroom home offered to the market with no ongoing chain.

The property offers a huge amount of potential to extend and improve the current accommodation STPP which does require modernisation throughout.

Need to know

- Semi detached home.
- Three double bedrooms.
- Through lounge / dining room.
- Separate kitchen area.
- Spacious rear garden.
- Requiring modernisation.
- Private driveway.
- No ongoing chain.
- Short walk to Tattenham corner station and shops.



Interested?

banstead@ralphjames.co.uk
01737 371 700

ralphjames.co.uk

Upland Way, Epsom Downs
Total Area: 103.8 m² ... 1117 ft² (excluding eaves storage, store)
FOR ILLUSTRATIVE PURPOSES ONLY.

Whilst every attempt has been made to ensure the accuracy of the floor plan shown, all measurements, positioning, fixtures, features, fittings and any other data shown are an approximate interpretation for illustrative purposes only and are not to scale.

No responsibility is taken for any error, omission, miss-statement or use of data shown.

The above statement applies to both 'Still Moving London LTD' and the Company or individual displaying this floor plan.

Unauthorised reproduction prohibited.

Â© Still Moving London LTD (www.stillmoving.london)