



# The Drive, Banstead

£1,300,000





“ Tumble Beacon is an historical monument at the heart of one of Banstead's most prestigious locations just a short distance from the Village and the open spaces of Nork Park.





Situated on arguably the most highly sought after road in Banstead, just a short walk away from Banstead Village and the open spaces of Nork Park, sits this four bedroom detached home which is offered to the market with no ongoing chain.

The home itself is positioned behind the ancient monument of the Tumble Beacon, which history dates back to the Bronze age, and has become somewhat of an architectural treasure.

Inside the home the current occupiers, who have owned the property for approaching 50 years, have maintained the property throughout, whilst also keeping many original features showcased perfectly by the solid oak staircase.

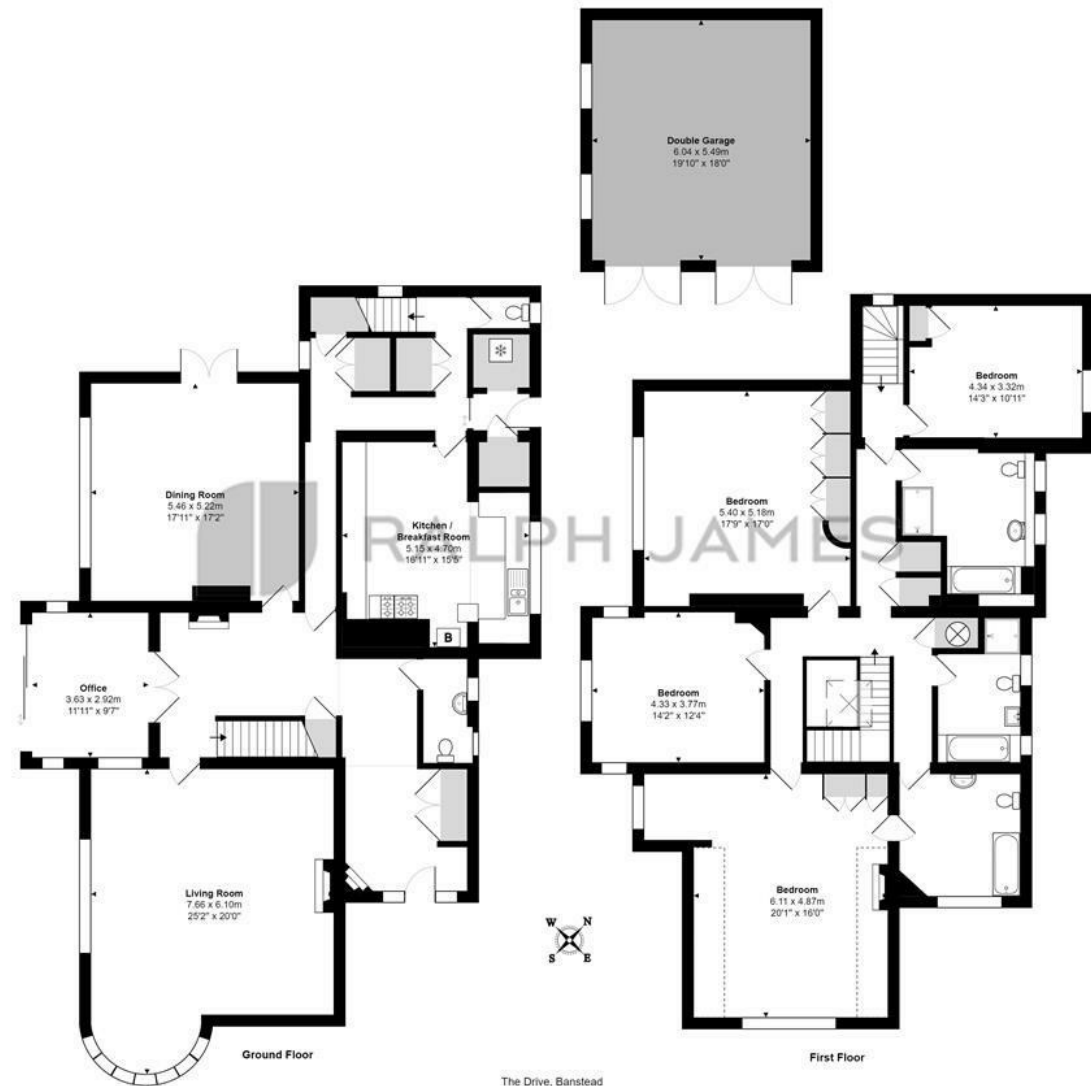
There are four well-sized bedrooms and three bathrooms, which can be accessed by each of the staircases the home offers. On the ground floor there two spacious reception rooms, separate kitchen breakfast room, two downstairs WCs and a utility space.

Outside there is a large private driveway and a detached double garage. There is plenty of scope to extend in the future (STPP).



# Need to know

- The Drive, Banstead.
- Four bedroom detached family home.
- Full of character and original features.
- Ample reception room space.
- Huge amount of privacy from the road.
- Detached double garage.
- Tumble Beacon - An historical monument dating back to the bronze age.
- Walking distance to Banstead Village and Nork park.
- Potential to extend STPP.
- Freehold.



## Interested?

banstead@ralphjames.co.uk  
01737 371 700

ralphjames.co.uk

The Drive, Banstead  
Total Area: 323.5 m<sup>2</sup> ... 3482 ft<sup>2</sup> (excluding double garage)  
FOR ILLUSTRATIVE PURPOSES ONLY.  
Whilst every attempt has been made to ensure the accuracy of the floor plan shown, all measurements, positioning, fixtures, features, fittings and any other data shown are an approximate interpretation for illustrative purposes only and are not to scale.  
No responsibility is taken for any error, omission, mis-statement or use of data shown.  
The above statement applies to both 'Stil Moving London LTD' and the Company or individual displaying this floor plan.  
Unauthorized reproduction prohibited.  
© Stil Moving London LTD (www.stilmoving.london)