



Mint Lane, Lower Kingswood

£650,000





Situated in a cul-de-sac private road in a highly sought after location sits this beautifully presented family home offered to the market with no ongoing chain.





Located in a quiet, private Road with a rural feel is this beautifully finished cottage. It has been extended by the current owners to offer flexible family space throughout the ground floor with open plan living flowing out to the private rear garden.

The bright and welcoming hallway leads to a separate lounge to the front of the house, presenting an ideal relaxing space with a log burner. The cleverly extended open plan dining / kitchen area to the rear has the benefit of a utility area and downstairs w/c.

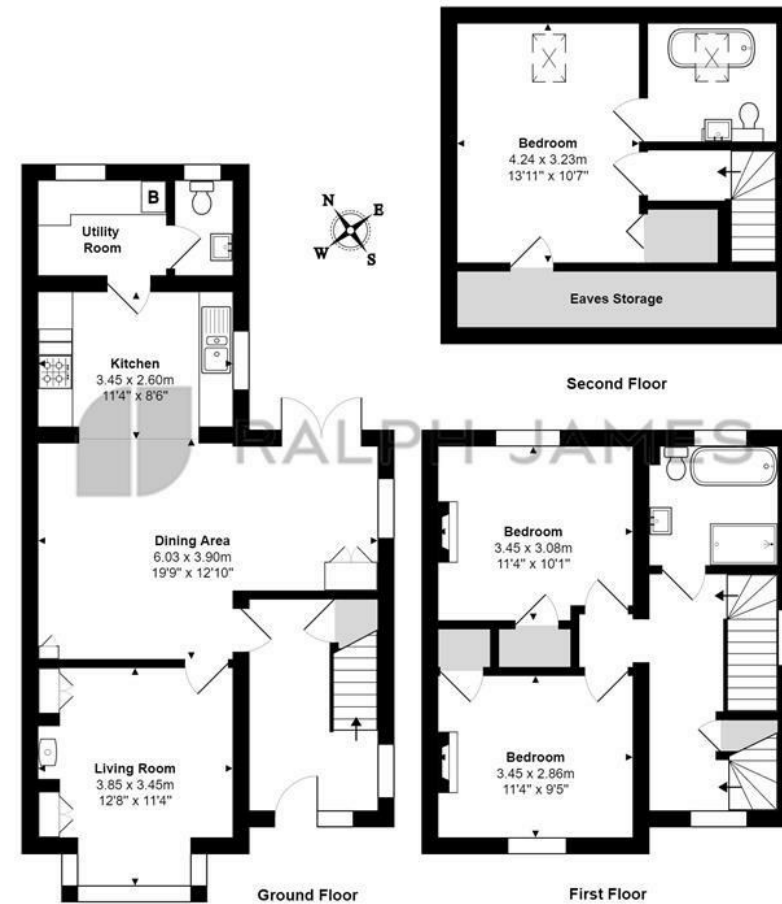
The first floor has two double bedrooms, both with built in storage, along with the family bathroom. The principle bedroom is on the second floor with ample storage and en-suite.

The property has been tastefully decorated and maintained throughout, with every room showcasing a modern feel whilst in-keeping with the countryside setting and age of the home. The existing owners have created a wonderful space, ideal for growing families, as well as the added benefits of a larger than average driveway and beautifully kept rear garden.



Need to know

- Beautifully presented semi detached home
- Open plan kitchen / dining space
- Utility room and downstairs w/c
- Separate lounge
- Two double bedrooms and family bathroom
- Principle bedroom with en-suite
- Large private driveway
- Cul-de-sac private road location
- Secluded rear garden
- Freehold



Interested?

banstead@ralphjames.co.uk
01737 371 700

ralphjames.co.uk

Mint Lane, Lower Kingswood, Tadworth

Total Area: 129.6 m² ... 1395 ft²

FOR ILLUSTRATIVE PURPOSES ONLY.

Whilst every attempt has been made to ensure the accuracy of the floor plan shown, all measurements, positioning, fixtures, features, fittings and any other data shown are an approximate interpretation for illustrative purposes only and are not to scale.

No responsibility is taken for any error, omission, miss-statement or use of data shown.

The above statement applies to both 'Still Moving London LTD' and the Company or individual displaying this floor plan.

Unauthorised reproduction prohibited.

© Still Moving London LTD (www.stillmoving.london)

 RALPH JAMES