



Colburn Way, Sutton

£700,000





“

A beautifully refurbished and designed four bedroom family home, located in a peaceful residential street, backing onto allotments and close to parkland

”



Located in a popular quiet residential street, back onto allotments and close to open parkland, sits this beautifully re-furnished and modernised four bedroom semi detached home.

This wonderful home showcases expertly the open plan living that everyone is looking for, with the kitchen dining room an ideal space for families and hosting, with bi-fold doors onto the sun-trapped garden. The owners have also cleverly made a large utility room, perfect for hiding away the white goods and washing, as well as internal access to the garage / storage area.

On the first floor there are two spacious double bedrooms, both with modern window shutters, as well as bedroom four and the family bathroom.

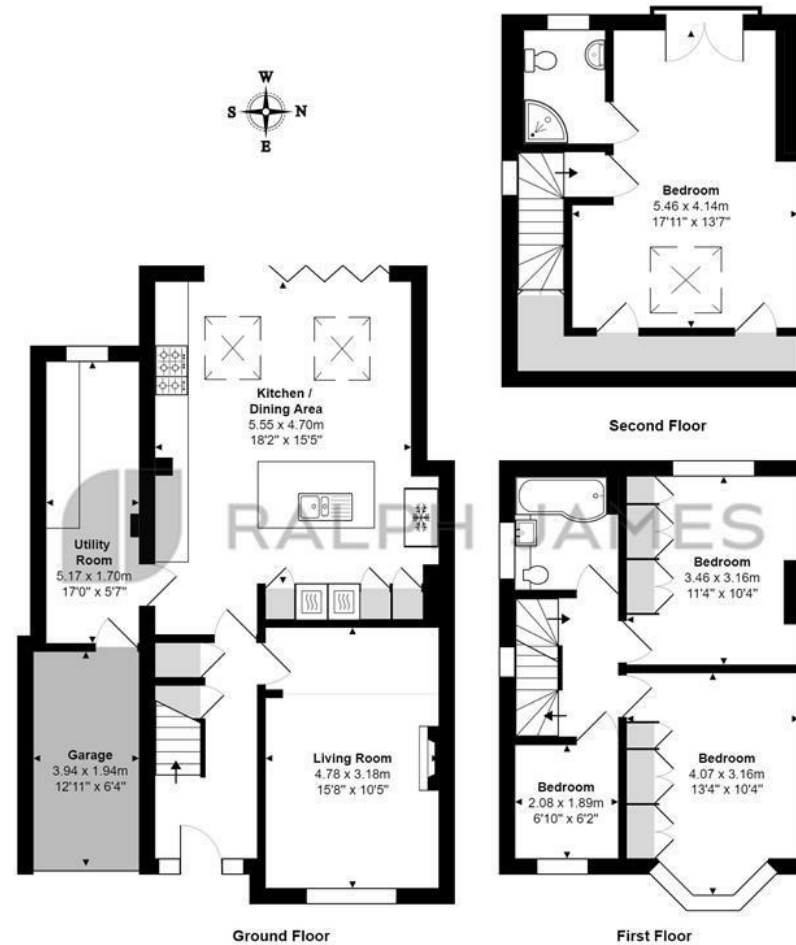
On the second floor there is a beautifully designed master suite, complete with a juliet balcony with views onto the allotments, as well as an en-suite.

Outside there is a South Westerly facing rear garden, boasting a great patio space for the summer evenings, as well as a private double driveway to the front of the home



Need to know

- Beautifully finished family home
- Four bedrooms
- Stunning open plan kitchen dining area with central island
- Separate utility room
- Private cosy lounge
- Two double bedrooms and single bedroom on the first floor
- Wonderful master suite with juliet balcony
- Backing allotments and just a short walk to parkland
- Private double driveway
- Freehold



Interested?

banstead@ralphjames.co.uk
01737 371 700

#

ralphjames.co.uk

Colburn Way, Sutton
Total Area: 144.2 m² ... 1552 ft²
FOR ILLUSTRATIVE PURPOSES ONLY.

Whilst every attempt has been made to ensure the accuracy of the floor plan shown, all measurements, positioning, fixtures, features, fittings and any other data shown are an approximate interpretation for illustrative purposes only and are not to scale.

No responsibility is taken for any error, omission, miss-statement or use of data shown.

The above statement applies to both 'Still Moving London LTD' and the Company or individual displaying this floor plan.

Unauthorised reproduction prohibited.

© Still Moving London LTD (www.stillmoving.london)

 RALPH JAMES