



# Woodcote Valley Road, Purley

From £525,000







“

If you're looking to retire to a quiet, leafy, residential suburb, but with quick and easy transport links into London, Medford House in Purley could well be the place for you.

”

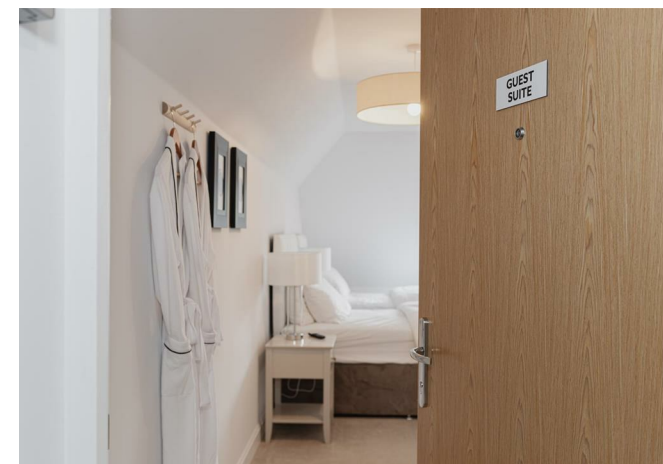




This Retirement Living development in Purley will feature just 29 apartments, reflecting the town's close-knit community feel. These 29 units will feature either two-bedrooms or one-bedroom, and some will have balconies overlooking the beautiful landscaped gardens. Homeowners will have full use of the club lounge, a tastefully designed space where you'll be able to catch up with neighbours and friends.

Property management and maintenance will be taken care of, as will water and sewerage rates. The House Manager will manage the development day-to-day and will be on hand during office hours and you'll have access to a 24-hour emergency call centre. There is a camera-entry system, and accessibility throughout with lifts to all floors.

Pop into Purley town centre, just 0.3 miles away, to sample some of its many restaurants and cafes, boutiques and salons. Purley railway station is just 0.4 miles from the development, where regular trains run to London Victoria and surrounding areas. You can also very easily access both the M23 and the M25.



## Need to know

- Luxurious and low-maintenance, these Retirement Living properties are available to the over 60s.
- One bed, one bath, open plan living spaces.
- Built in 2023 by McCarthy Stone.
- Stylish communal living spaces.
- Dedicated House Manager.
- Guest suite and on-street bay parking for guests.
- Homeowners' car park, cycle store and scooter room.
- Pop into Purley town centre, just 0.3 miles away, to sample some of its many restaurants and cafes, boutiques and salons.
- Purley railway station is just 0.4 miles from the development, where regular trains run to London Victoria and surrounding areas.
- You can also very easily access both the M23 and the M25.

---

## Interested?

banstead@ralphjames.co.uk  
01737 371 7000

ralphjames.co.uk  
@ralphjamesestateagents