



Globe Wharf
205 Rotherhithe Street | London | SE16 5XX

FINE & COUNTRY

Step inside

Globe Wharf

This stylish riverside warehouse apartment in Rotherhithe offers an exceptional blend of contemporary living and industrial charm. Nestled along the Thames, the apartment boasts expansive windows that flood the space with natural light and offer stunning river views.

The open-plan living area features high ceilings and sleek finishes, creating a modern yet comfortable atmosphere.

Residents enjoy access to top-tier amenities, including a communal swimming pool and fully equipped gym, perfect for those who appreciate an active lifestyle.

The building itself retains its historic warehouse appeal, with exposed brickwork and original features that add character and warmth. Located in the vibrant Rotherhithe area, you'll have easy access to local cafes, bars, and transport links, making it an ideal spot for city living by the river. Whether you're unwinding by the water or working out in the gym, this riverside warehouse apartment is the perfect blend of urban convenience and tranquil riverside living.











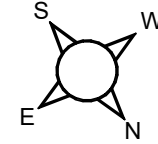




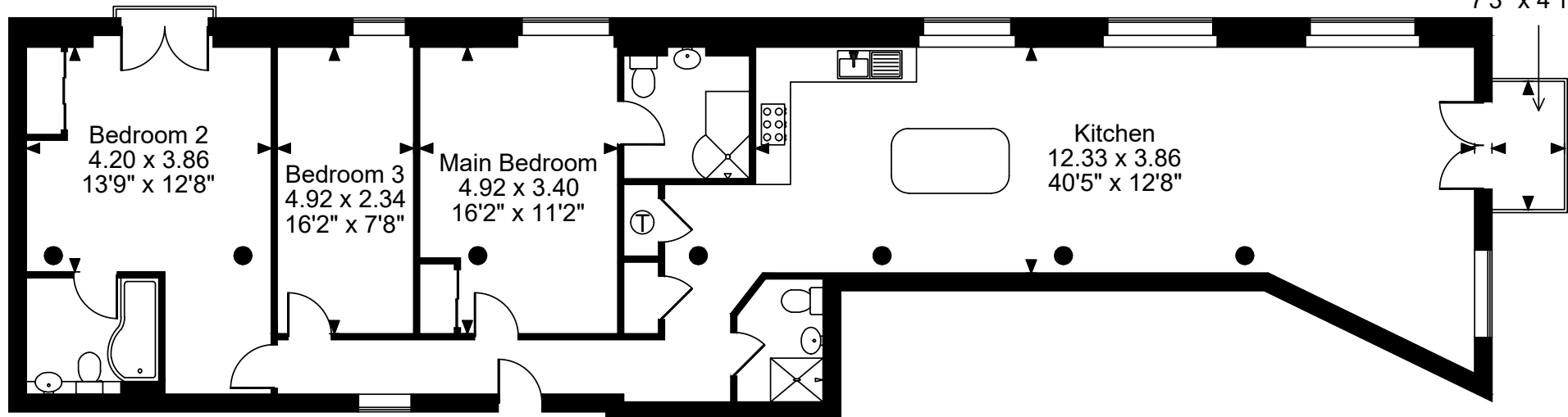




Globe Wharf, Rotherhithe Street
Approximate Gross Internal Area
1391 Sq Ft/129 Sq M
Balcony external area = 29 Sq Ft/3 Sq M



Balcony
 2.20 x 1.24
 7'3" x 4'1"



Third Floor

Tenure: Share of freehold
 Council Tax Band: D

FOR ILLUSTRATIVE PURPOSES ONLY - NOT TO SCALE

The position & size of doors, windows, appliances and other features are approximate only.

© ehouse. Unauthorised reproduction prohibited. Drawing ref. dig/8641901/DGO

Score	Energy rating	Current	Potential
92+	A		
81-91	B		
69-80	C		
55-68	D	62 D	67 D
39-54	E		
21-38	F		
1-20	G		

Fine & Country South East London
Tel: +44 (0) 20 7635 2063
southeastlondon@fineandcountry.com
47b Great Guildford Street, London Bridge, London SE1 0ES

