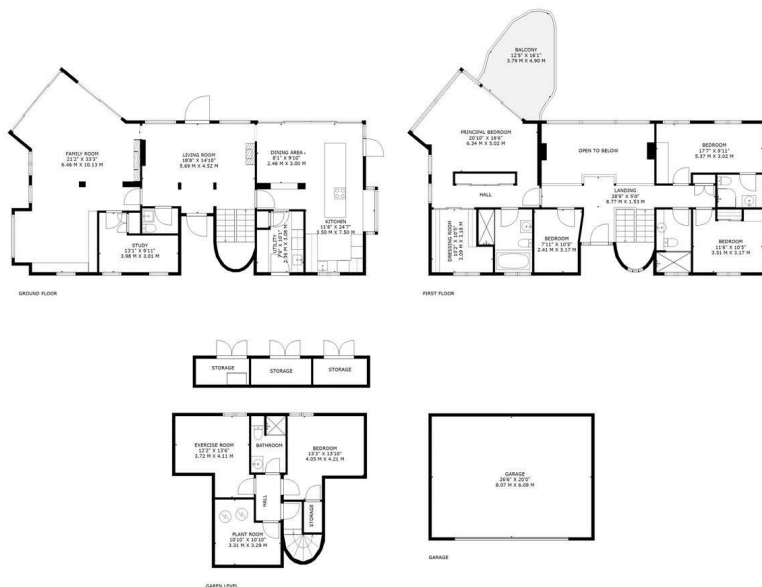




PRICE GUIDE

£2,250,000
Skeet Hill Lane
London, BR6 7QA

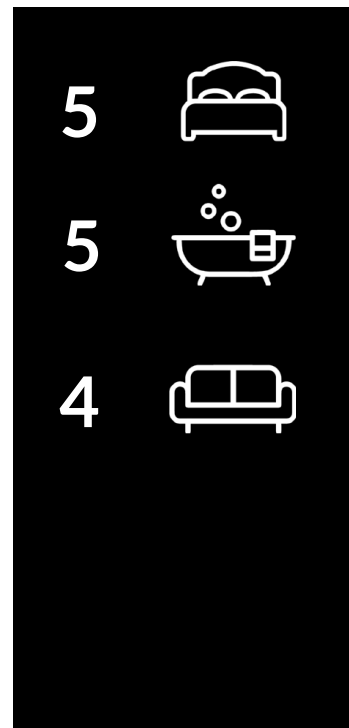
FINE & COUNTRY




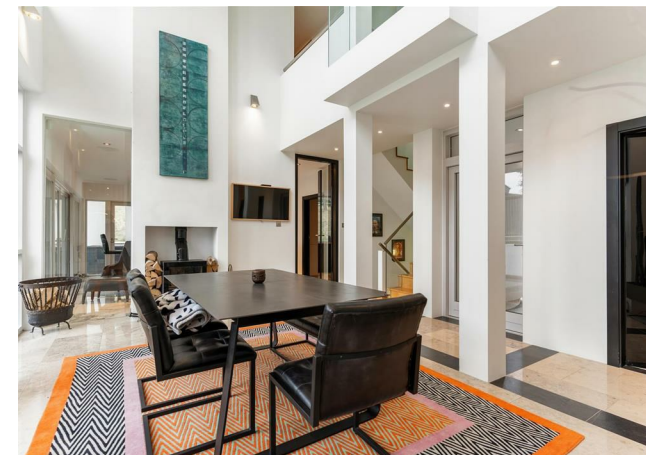
GROSS INTERNAL AREA: 3186 sq ft, 296 m2
 OPEN TO BELOW: 177 sq ft, 16 m2
 BALCONY: 155 sq ft, 14 m2
 GARAGE & OUTBUILDINGS: 652 sq ft, 61 m2

OVERALL TOTALS: 4170 sq ft, 387 m2

SIZES AND DIMENSIONS ARE APPROXIMATE, ACTUAL MAY VARY. FLOORS MAY NOT BE SHOWN IN THEIR ACTUAL LOCATION



| Energy Efficiency Rating | | Current | Potential |
|---|--|-------------------------|---|
| Very energy efficient - lower running costs | | | |
| (92 plus) A | | | |
| (81-91) B | | | |
| (69-80) C | | | |
| (55-68) D | | 59 | 59 |
| (39-54) E | | | |
| (21-38) F | | | |
| (1-20) G | | | |
| Not energy efficient - higher running costs | | | |
| England & Wales | | EU Directive 2002/91/EC |  |



Agents Note: Whilst every care has been taken to prepare these particulars, they are for guidance purposes only. All measurements are approximate and are for general guidance purposes only and whilst every care has been taken to ensure their accuracy, they should not be relied upon and potential buyers/tenants are advised to recheck the measurements

FINE & COUNTRY

OFFICE ADDRESS
 47B Great Guildford Street
 London Bridge
 SE1 0ES

OFFICE DETAILS
 02076352063
 southeastlondon@fineandcountry.
<https://www.fineandcountry.co.uk>