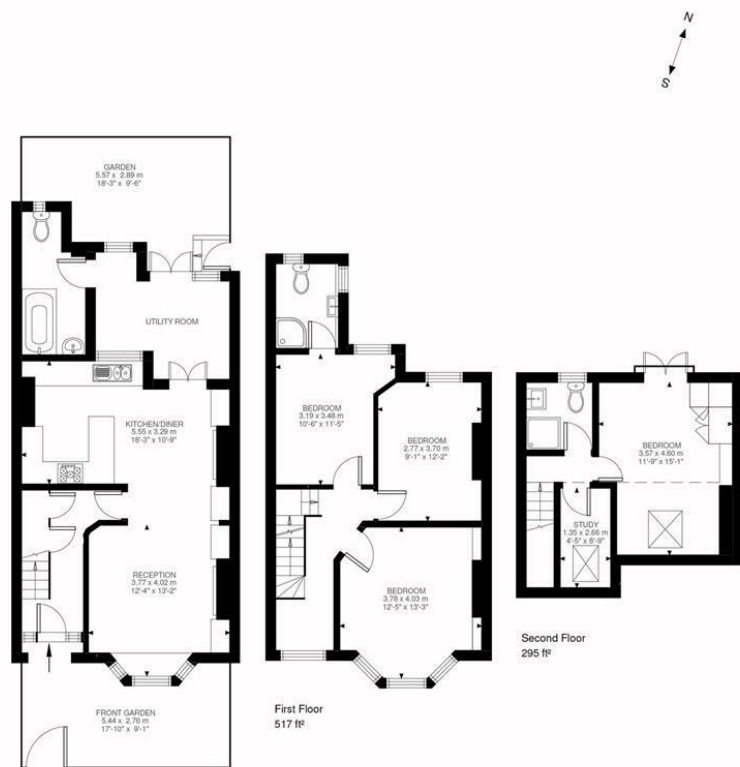




OFFERS IN EXCESS OF

£1,200,000
Nutbrook Street
London, SE15 4JU

FINE & COUNTRY

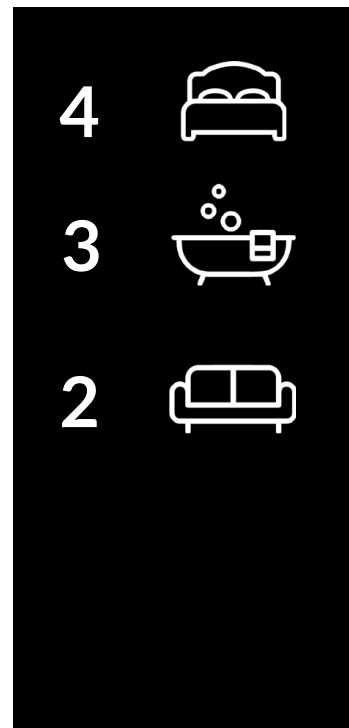


Nutbrook Street, SE15
Approximate Gross Internal Area.
134.81 SQ.M / 1451 SQ.FT

KEY: CH = Ceiling Height
[Restricted Head Height]

GARETH JAMES

Illustration for identification purposes only. Not to scale.
Floor Plan Drawn According To RICS Guidelines.



Energy Efficiency Rating		
	Current	Potential
Very energy efficient - lower running costs		
(92 plus) A		
(81-91) B		
(69-80) C		
(55-68) D		
(39-54) E		
(21-38) F		
(1-20) G		
Not energy efficient - higher running costs		
England & Wales	EU Directive 2002/91/EC	



Agents Note: Whilst every care has been taken to prepare these particulars, they are for guidance purposes only. All measurements are approximate and are for general guidance purposes only and whilst every care has been taken to ensure their accuracy, they should not be relied upon and potential buyers/tenants are advised to recheck the measurements

FINE & COUNTRY

OFFICE ADDRESS
47B Great Guildford Street
London Bridge
SE1 0ES

OFFICE DETAILS
02076352063
southeastlondon@fineandcountry.
<https://www.fineandcountry.co.uk>