



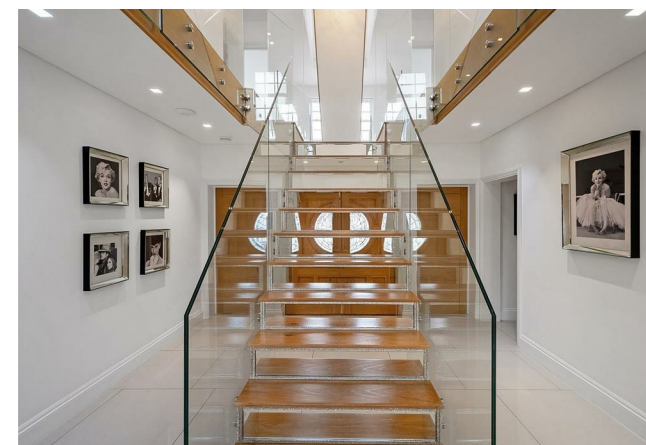
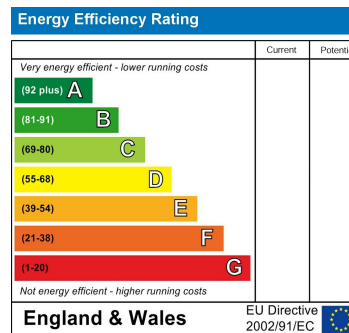
**£2,590,000**  
**Marlings Park Avenue**  
Chislehurst, BR7 6QN

FINE & COUNTRY





**TOTAL: 4073 sq. ft, 378 m<sup>2</sup>**  
 GROUND FLOOR : 1961 sq. ft, 182 m<sup>2</sup>, FIRST FLOOR : 1463 sq. ft, 136 m<sup>2</sup>, SECOND FLOOR : 649 sq. ft, 60 m<sup>2</sup>  
 EXCLUDED AREAS: LOW CEILING: 46 sq. ft, 4 m<sup>2</sup>  
 Sizes And Dimensions Are Approximate, Actual May Vary.



Agents Note: Whilst every care has been taken to prepare these particulars, they are for guidance purposes only. All measurements are approximate and are for general guidance purposes only and whilst every care has been taken to ensure their accuracy, they should not be relied upon and potential buyers/tenants are advised to recheck the measurements

**FINE & COUNTRY**

**OFFICE ADDRESS**  
 47B Great Guildford Street  
 London Bridge  
 SE1 0ES

**OFFICE DETAILS**  
 02076352063  
 southeastlondon@fineandcountry.  
<https://www.fineandcountry.co.uk>