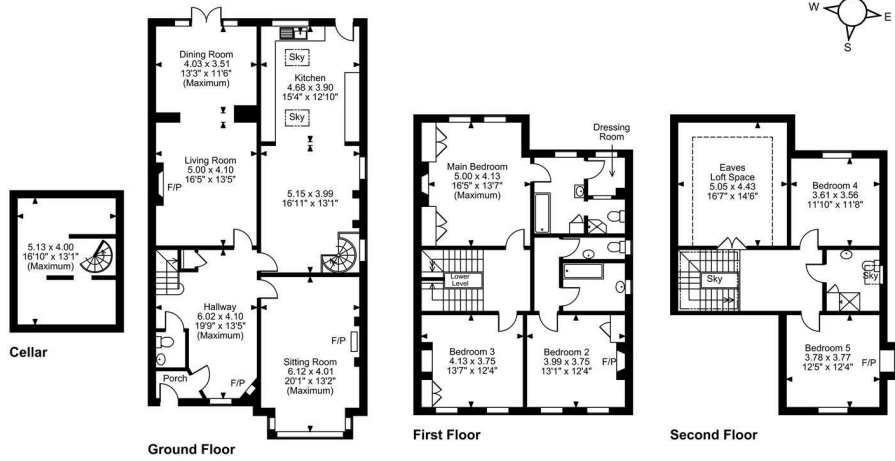




£1,850,000
Annesley Road
Blackheath, SE3 0JX

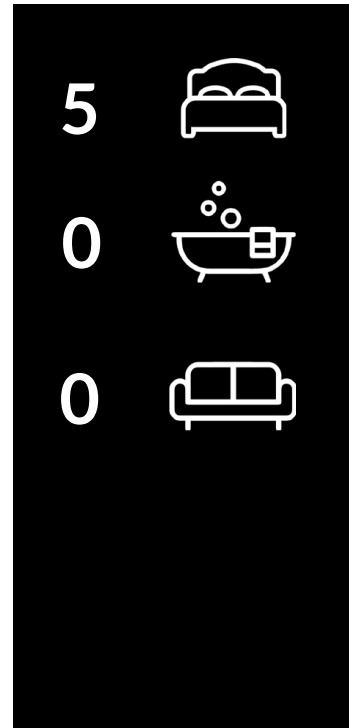
FINE & COUNTRY

Annesley Road, London
Approximate Gross Internal Area
3041 Sq Ft/283 Sq M



FOR ILLUSTRATIVE PURPOSES ONLY - NOT TO SCALE
The position & size of doors, windows, appliances and other features are approximate only.
Denotes restricted head height
© ehoush. Unauthorised reproduction prohibited. Drawing ref. dig/8633130/CGI

FINE & COUNTRY



Energy Efficiency Rating		Current	Potential
Very energy efficient - lower running costs			
(92 plus)	A		
(81-91)	B		
(69-80)	C		
(55-68)	D		
(39-54)	E		
(21-38)	F		
(1-20)	G		
Not energy efficient - higher running costs			
England & Wales		51	76
		EU Directive 2002/91/EC	



Agents Note: Whilst every care has been taken to prepare these particulars, they are for guidance purposes only. All measurements are approximate and are for general guidance purposes only and whilst every care has been taken to ensure their accuracy, they should not be relied upon and potential buyers/tenants are advised to recheck the measurements

FINE & COUNTRY

OFFICE ADDRESS
47B Great Guildford Street
London Bridge
SE1 0ES

OFFICE DETAILS
02076352063
southeastlondon@fineandcountry.
<https://www.fineandcountry.co.uk>