



OFFERS IN EXCESS OF

£800,000

Ewer Street

London, SE1 0FT

FINE & COUNTRY

PROPERTY SUMMARY

Elevate city living at Rosler Building, Ewer Street. Stunning 2-bed apartment with Shard views, open-plan design, and prime London Bridge location.

2



2



1

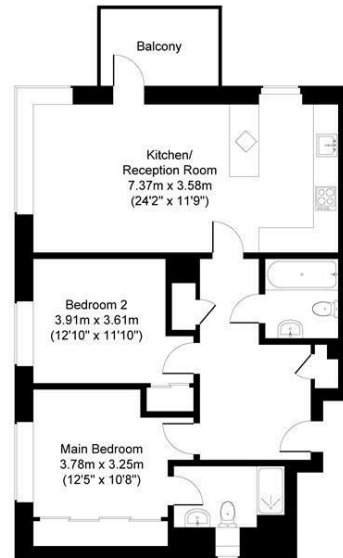








Approximate Gross internal Area
Ninth Floor = 77.40 sq m / 833 sq ft



Ninth Floor

This Plan is for layout guidance only. Not drawn to scale unless stated. Windows and door openings are approximate. Whilst every care is taken in the preparation of this plan, please check all dimensions shapes and compass bearing before making any decisions reliant upon them.

Produced for Fine & Country



LOCAL AUTHORITY

TENURE

Leasehold

COUNCIL TAX BAND

F

VIEWINGS

By prior appointment only

Energy Efficiency Rating		
	Current	Potential
<i>Very energy efficient - lower running costs</i>		
(92 plus) A		
(81-91) B	83	86
(69-80) C		
(55-68) D		
(39-54) E		
(21-38) F		
(1-20) G		
<i>Not energy efficient - higher running costs</i>		
England & Wales	EU Directive 2002/91/EC	

Agents Note: Whilst every care has been taken to prepare these particulars, they are for guidance purposes only. All measurements are approximate and are for general guidance purposes only and whilst every care has been taken to ensure their accuracy, they should not be relied upon and potential buyers/tenants are advised to recheck the measurements



OFFICE ADDRESS

181 Queens Road
Peckham
SE15 2ND

OFFICE DETAILS

02076352063
southeastlondon@fineandcountry.
<https://www.fineandcountry.co.uk>