

Kelsall Mews

Approx Gross Internal Area

Ground Floor = 67.3 Sq m / 724 Sq Ft

First Floor = 65.7 Sq m / 707 Sq Ft

Second Floor = 65.1 Sq m / 701 Sq Ft

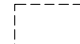
Third Floor = 56.9 Sq m / 612 Sq Ft

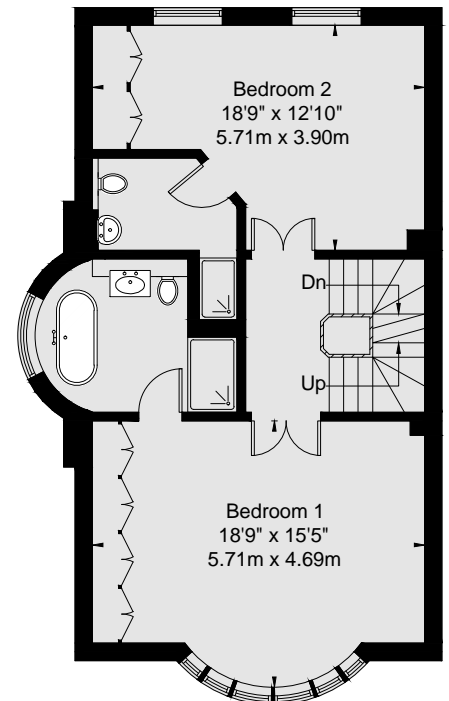
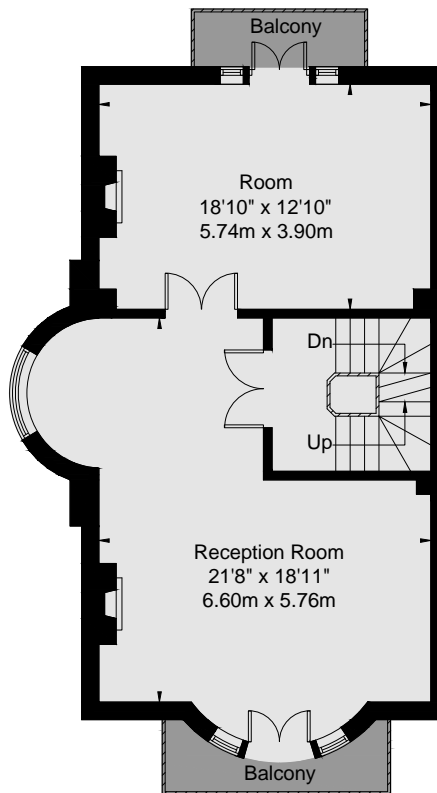
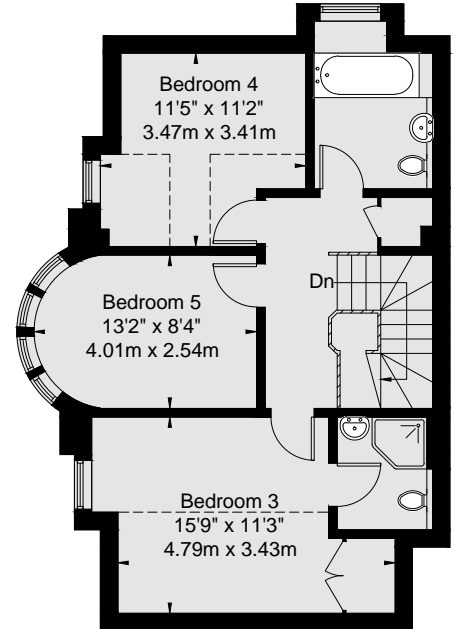
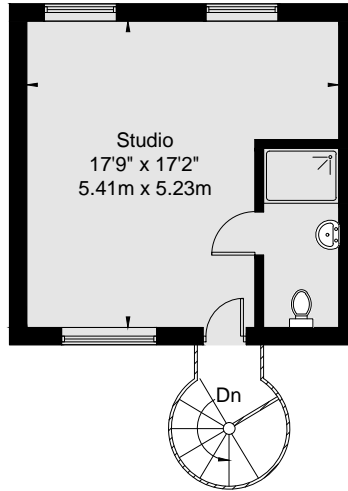
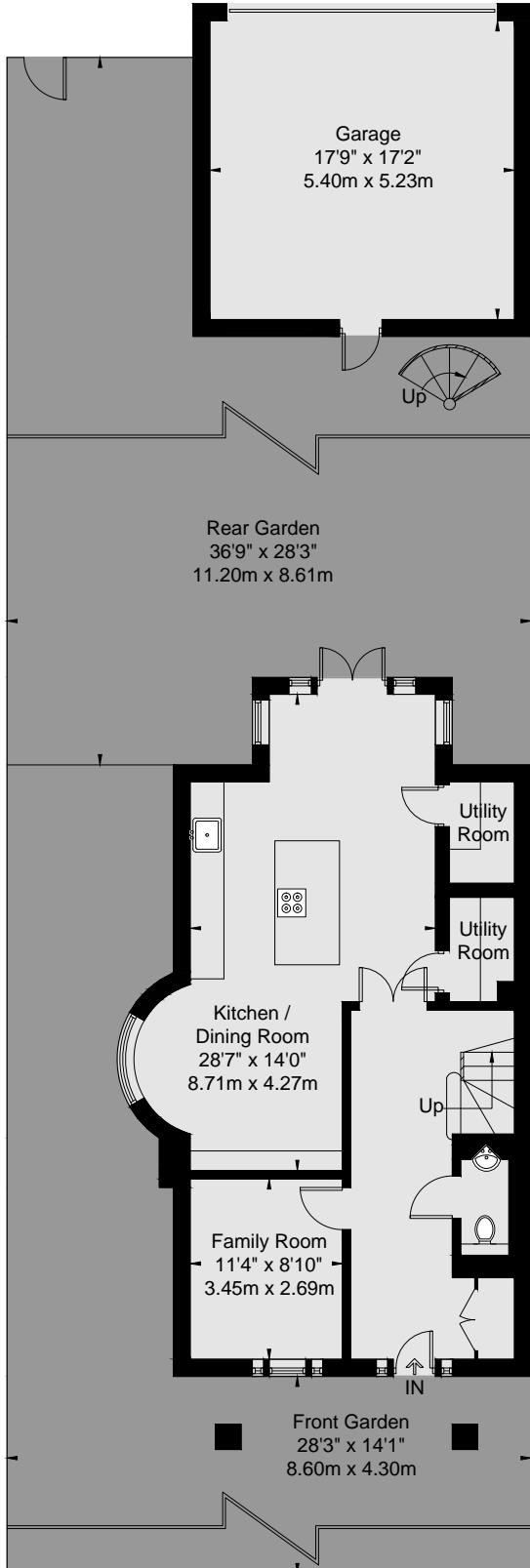
Garage = 28.5 Sq m / 307 Sq Ft

Studio = 28.5 Sq m / 307 Sq Ft

Total = 312 Sq m / 3358 Sq Ft



 = Reduced headroom below 1.5m / 5'0"



Viewmedia @ 2025
Viewmedia.co.uk

Whilst every attempt has been made to ensure the accuracy of this floor plan, measurements of doors, windows and rooms are approximate and no responsibility is taken for any error or omission. This illustration is for identification purpose only. Not drawn to scale, unless stated. Dimensions shown are to the nearest 3" and are to the points indicated by the arrow heads.