



Right Choice Estate Agents are delighted to offer to the market this three bedroom house located in the popular South Ham. The ground floor accommodation offers an entrance hallway, living room, kitchen and w/c. The first floor benefits from three bedrooms and a family bathroom. Additional features include a private rear garden and access to communal parking.

Location: South Ham benefits from a local Dentist, Doctors Surgery, pharmacy, convenience stores, schools, churches, parks and open space all within walking distance. The location benefits from a number of bus stops offering travel links to the Town Centre. Basingstoke Leisure Park is nearby which offers restaurants, cinema, ice rink, swimming centre and bowling alley. Basingstoke's Town Centre houses the Festival Place Shopping Centre and The Malls, and the mainline train station to London Waterloo.

Tenure: Freehold

Local Authority: Basingstoke & Deane Borough Council - Band B


Viewing Details: Strictly by appointment only. Please Contact Right Choice Estate Agents

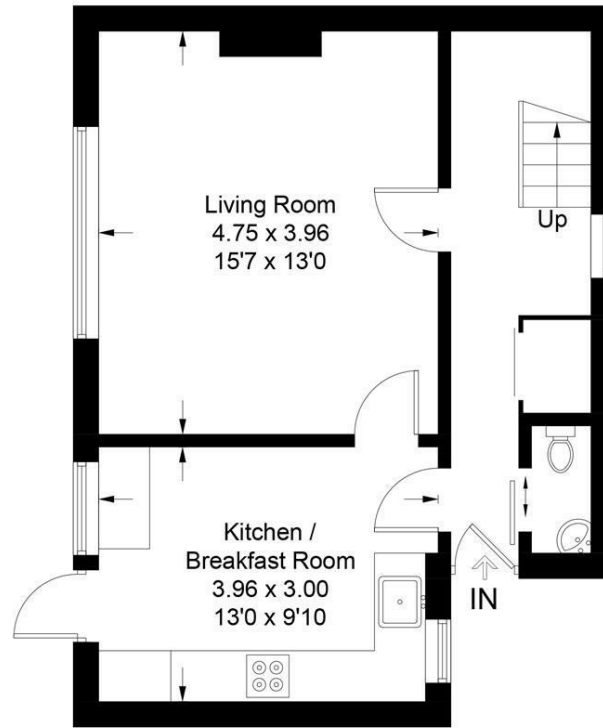




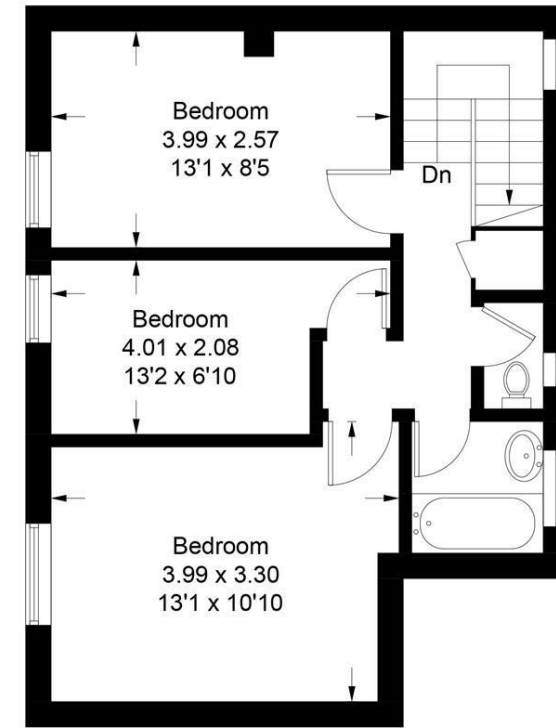
Cornish Close

Approximate Gross Internal Area = 85.1 sq m / 916 sq ft

Energy Efficiency Rating		Current	Potential
Very energy efficient - lower running costs			
(92 plus) A			
(81-91) B			
(69-80) C			
(55-68) D			
(39-54) E			
(21-38) F			
(1-20) G			
Not energy efficient - higher running costs			
England & Wales	EU Directive 2002/91/EC		



Ground Floor



First Floor

Illustration for identification purposes only, measurements are approximate, not to scale. floorplansUsketch.com © (ID1118266)

We endeavour to make our sales particulars accurate and reliable, however, they do not constitute or form part of an offer or any contract and none is to be relied upon as statements of representation or fact. Any services, systems and appliances listed in this specification have not been tested by us and no guarantee as to their operating ability or efficiency is given. All measurements have been taken as a guide to prospective buyers only, and are not precise. It is the responsibility of your appointed legal representative to ensure all relevant documentation is present and the property is suitable for purchase. If you require clarification or further information on any points, please contact us, especially if you are travelling some distance to view. Fixtures and fittings other than those mentioned are to be agreed with the seller by separate negotiation.

Right Choice Estate Agents is a trading name of Right Property Choice Limited. 72 Beecham Berrv. Basinastoke. Hampshire. England. RG224QN. Registered No: 14505100