



Right Choice Estate Agents are delighted to offer to the market with NO ONWARD CHAIN this end of terrace family home. The ground floor offers a porch, generous living room, modern fitted kitchen/dining room and a conservatory. The first floor benefits from three bedrooms two of which are doubles and a modern fitted shower room. Additional features include a private rear garden, garage and access to permit parking.

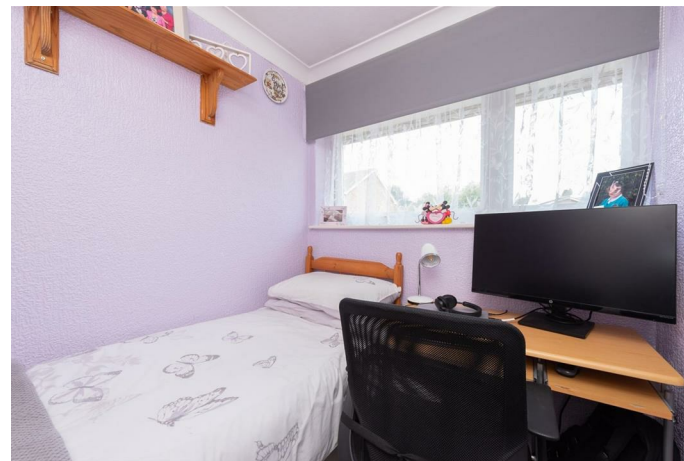
Location: Budds Close is located on the outskirts of Basingstoke Town Centre, close to schools and other amenities, shops, take away's and parks with convenient access to the M3.

Tenure: Freehold

Local Authority: Basingstoke & Deane Borough Council - Band C

Viewing Details: Strictly by appointment only. Please Contact Right Choice Estate Agents





Energy Efficiency Rating		Current	Potential
Very energy efficient - lower running costs			
(92 plus) A			87
(81-91) B			
(69-80) C		72	
(55-68) D			
(39-54) E			
(21-38) F			
(1-20) G			
Not energy efficient - higher running costs			
England & Wales	EU Directive 2002/91/EC		

Budds Close

Approximate Gross Internal Area = 76.7 sq m / 826 sq ft

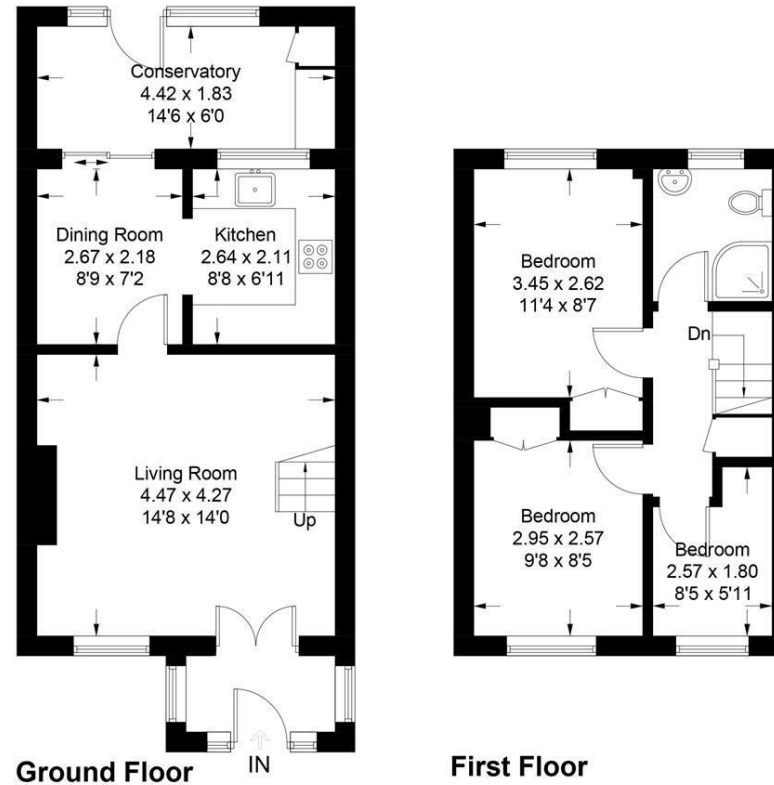


Illustration for identification purposes only, measurements are approximate, not to scale. floorplansUsketch.com © (ID1096467)

We endeavour to make our sales particulars accurate and reliable, however, they do not constitute or form part of an offer or any contract and none is to be relied upon as statements of representation or fact. Any services, systems and appliances listed in this specification have not been tested by us and no guarantee as to their operating ability or efficiency is given. All measurements have been taken as a guide to prospective buyers only, and are not precise. It is the responsibility of your appointed legal representative to ensure all relevant documentation is present and the property is suitable for purchase. If you require clarification or further information on any points, please contact us, especially if you are travelling some distance to view. Fixtures and fittings other than those mentioned are to be agreed with the seller by separate negotiation. Right Choice Estate Agents is a trading name of Right Property Choice Limited, 72 Beecham Berry, Basingstoke, Hampshire, England, RG224QN, Registered No: 14505100