





Right Choice Estate Agents are delighted to offer to the market this rarely available detached family home in the popular Beverley Close. The ground floor offers an entrance hallway, kitchen, dining room, living room, conservatory, utility and w/c. The first floor benefits from four double bedrooms, family bathroom, walk in wardrobe and en suite. Additional features include a large private rear garden providing suntraps and shade, double garage & ample driveway parking. Viewing is highly recommended to avoid disappointment.

Location: Viabes is situated on the outskirts of the town centre. Close by you will find great local amenities. There is a regular bus service to the town, and various routes to walk should you wish. The property offers great access to the M3.

Tenure: Freehold

Local Authority: Basingstoke & Deane Borough Council - Band G

Viewing Details: Strictly by appointment only. Please Contact Right Choice Estate Agents








### Beverley Close

Approximate Gross Internal Area = 206.9 sq m / 2227 sq ft  
 Garage = 24.2 sq m / 260 sq ft  
 Total = 231.1 sq m / 2487 sq ft

Energy Efficiency Rating		Current	Potential
Very energy efficient - lower running costs			
(92 plus) <b>A</b>			79
(81-91) <b>B</b>			
(69-80) <b>C</b>			
(55-68) <b>D</b>		62	
(39-54) <b>E</b>			
(21-38) <b>F</b>			
(1-20) <b>G</b>			
Not energy efficient - higher running costs			
England & Wales		EU Directive 2002/91/EC	

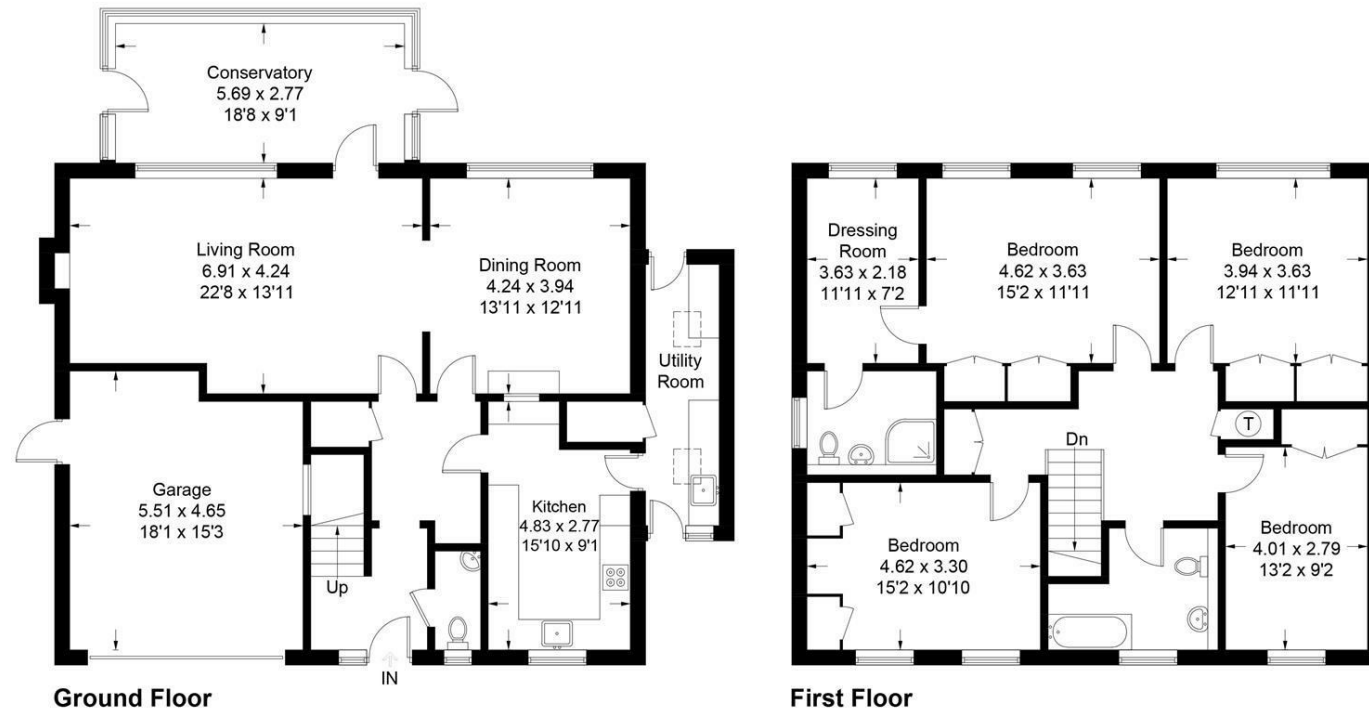


Illustration for identification purposes only, measurements are approximate, not to scale. floorplansUsketch.com © (ID1100033)

We endeavour to make our sales particulars accurate and reliable, however, they do not constitute or form part of an offer or any contract and none is to be relied upon as statements of representation or fact. Any services, systems and appliances listed in this specification have not been tested by us and no guarantee as to their operating ability or efficiency is given. All measurements have been taken as a guide to prospective buyers only, and are not precise. It is the responsibility of your appointed legal representative to ensure all relevant documentation is present and the property is suitable for purchase. If you require clarification or further information on any points, please contact us, especially if you are travelling some distance to view. Fixtures and fittings other than those mentioned are to be agreed with the seller by separate negotiation. Right Choice Estate Agents is a trading name of Right Property Choice Limited, 72 Beecham Berry, Basingstoke, Hampshire, England, RG224QN, Registered No: 14505100