



Right Choice Estate Agents are delighted to offer to the market this deceptively spacious detached bungalow on the highly desirable Pack Lane. The property offers an entrance hallway leading to three double bedrooms one of which has an en suite, kitchen/breakfast room, utility room, very large bathroom and a generous living/dining room with inglenook fireplace. Additional features include a large private rear garden, extra spacious garage/workshop, solar panels and ample driveway parking.

Location: Oakley is a popular village located just outside of Basingstoke. It offers schools, shops a public house and many other facilities. M3 junction 7 is easily accessible and main line railway to London Waterloo situated in nearby Basingstoke Town Centre.


Tenure: Freehold

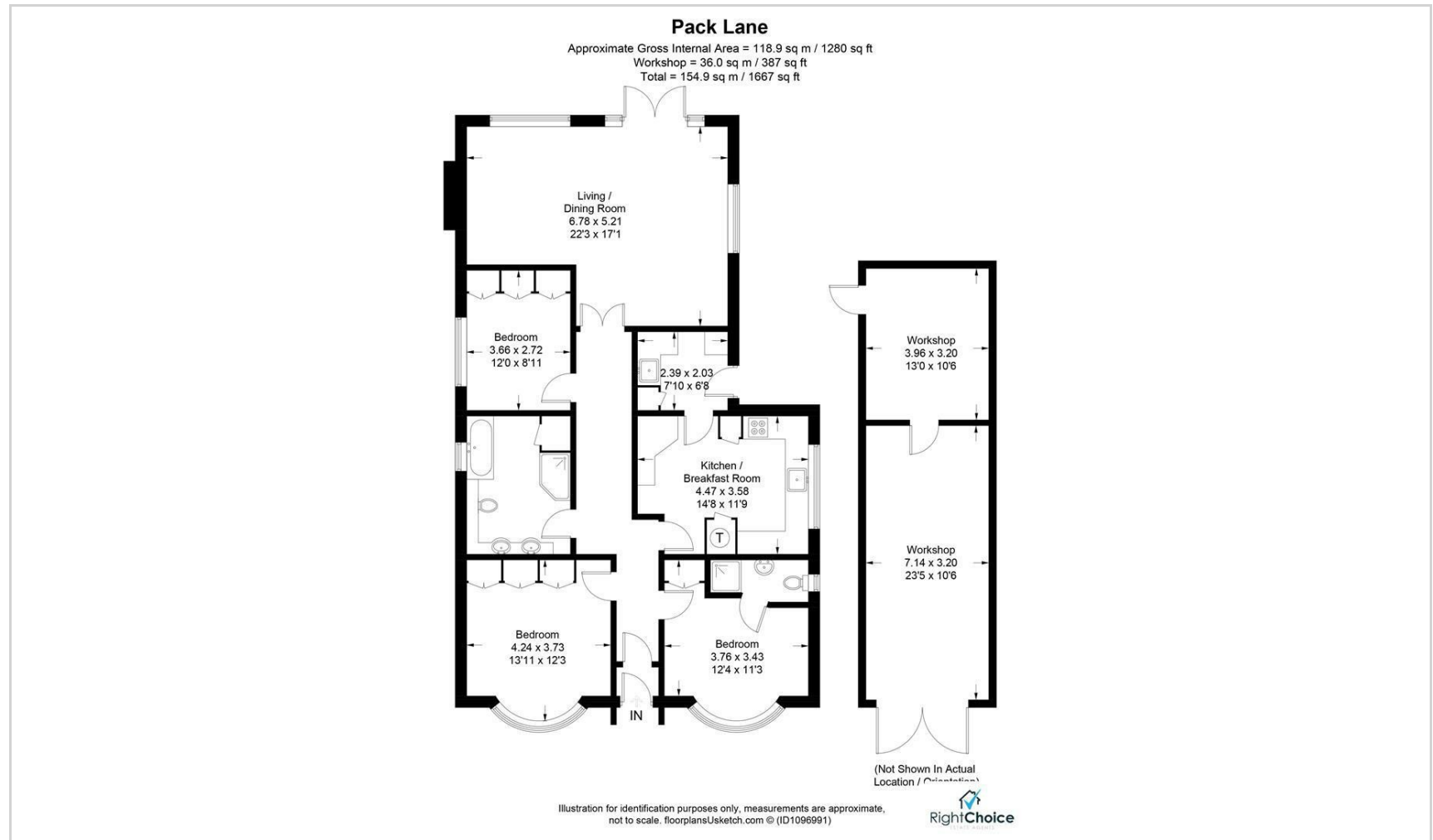
Local Authority: Basingstoke & Deane Borough Council - Band E

Viewing Details: Strictly by appointment only. Please Contact Right Choice Estate Agents





Energy Efficiency Rating		
	Current	Potential
Very energy efficient - lower running costs		
(92 plus) <b>A</b>		
(81-91) <b>B</b>		
(69-80) <b>C</b>		
(55-68) <b>D</b>		
(39-54) <b>E</b>		
(21-38) <b>F</b>		
(1-20) <b>G</b>		
Not energy efficient - higher running costs		
<b>England &amp; Wales</b>	EU Directive 2002/91/EC	



We endeavour to make our sales particulars accurate and reliable, however, they do not constitute or form part of an offer or any contract and none is to be relied upon as statements of representation or fact. Any services, systems and appliances listed in this specification have not been tested by us and no guarantee as to their operating ability or efficiency is given. All measurements have been taken as a guide to prospective buyers only, and are not precise. It is the responsibility of your appointed legal representative to ensure all relevant documentation is present and the property is suitable for purchase. If you require clarification or further information on any points, please contact us, especially if you are travelling some distance to view. Fixtures and fittings other than those mentioned are to be agreed with the seller by separate negotiation. Right Choice Estate Agents is a trading name of Right Property Choice Limited, 72 Beecham Berry, Basingstoke, Hampshire, England, RG224QN, Registered No: 14505100