



Right Choice Estate Agents are delighted to offer to the market this family home in the popular Limes Park. The ground floor accommodation offers a family room, study, utility and w/c. The first floor benefits from a kitchen/dining room, generous living room and access to the second floor which comprises three bedrooms, bathroom and an en suite. Additional features include a private rear garden, storage and parking.

Location: Limes Park is well located and offers fantastic local schools and shops along with regular bus links into the town centre. The nearby M3 provides an excellent link to London and the South Coast, and the A339 offers links to Newbury.

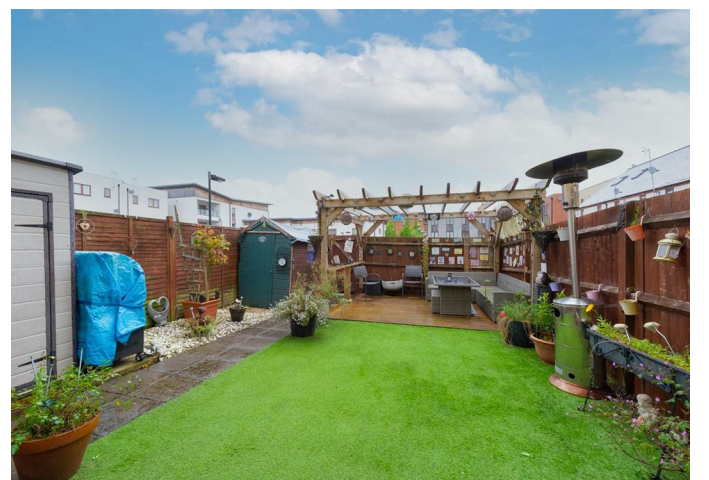
Tenure: Freehold

Estate Charge - Circa £258 per annum

Local Authority: Basingstoke & Deane Borough Council - Band D

Viewing Details: Strictly by appointment only. Please Contact Right Choice Estate Agents





Northbrook Crescent

Approximate Gross Internal Area = 137.2 sq m / 1477 sq ft

Energy Efficiency Rating		Current	Potential
Very energy efficient - lower running costs			
(92 plus) A			
(81-91) B			
(69-80) C			
(55-68) D			
(39-54) E			
(21-38) F			
(1-20) G			
Not energy efficient - higher running costs			
England & Wales	EU Directive 2002/91/EC	79	88

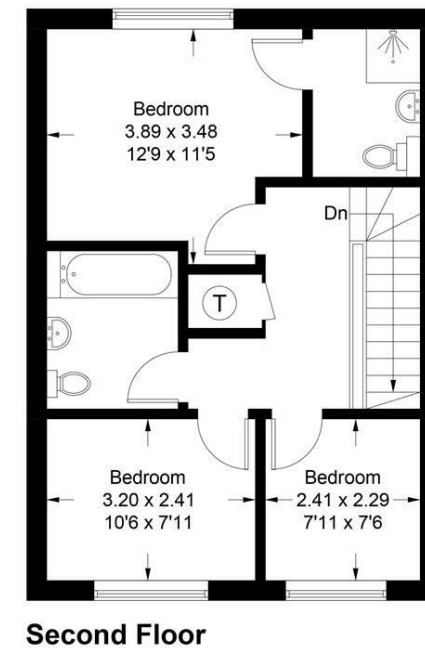
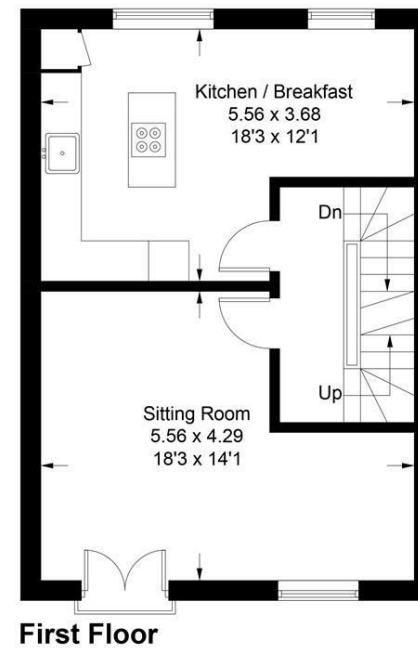
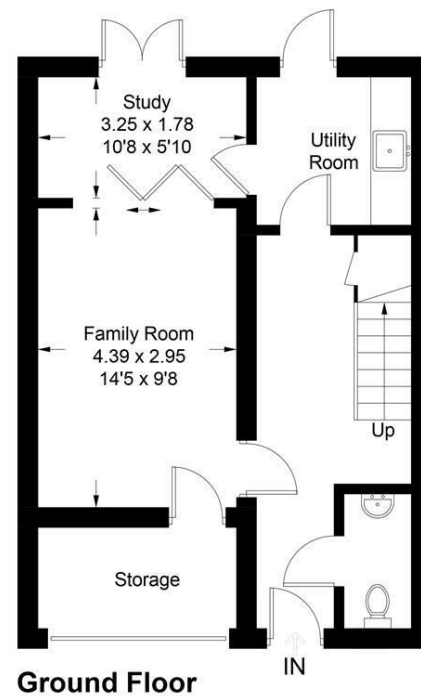


Illustration for identification purposes only, measurements are approximate, not to scale. floorplansUsketch.com © (ID1086463)

We endeavour to make our sales particulars accurate and reliable, however, they do not constitute or form part of an offer or any contract and none is to be relied upon as statements of representation or fact. Any services, systems and appliances listed in this specification have not been tested by us and no guarantee as to their operating ability or efficiency is given. All measurements have been taken as a guide to prospective buyers only, and are not precise. It is the responsibility of your appointed legal representative to ensure all relevant documentation is present and the property is suitable for purchase. If you require clarification or further information on any points, please contact us, especially if you are travelling some distance to view. Fixtures and fittings other than those mentioned are to be agreed with the seller by separate negotiation. Right Choice Estate Agents is a trading name of Right Property Choice Limited, 72 Beecham Berry, Basingstoke, Hampshire, England, RG224QN, Registered No: 14505100