



Right Choice Estate Agents are delighted to offer to the market with NO ONWARD CHAIN this modern semi detached family home. The ground floor benefits from an entrance hallway, generous kitchen/dining room, living room and w/c. The first floor offers three bedrooms, bathroom and stairs leading to the second floor which boasts the master suite. Additional features include gas central heating, double glazing, private rear garden and parking for two vehicles.

Location: Sherborne Fields offers fantastic local schools and shops along with regular bus links into the town centre. Commuting routes are also a benefit with the M3 & A33 within a short drive.

Tenure: Freehold

Estate Charge £295.33 per annum

Local Authority: Basingstoke & Deane Borough Council - Band D


Viewing Details: Strictly by appointment only. Please Contact Right Choice Estate Agents

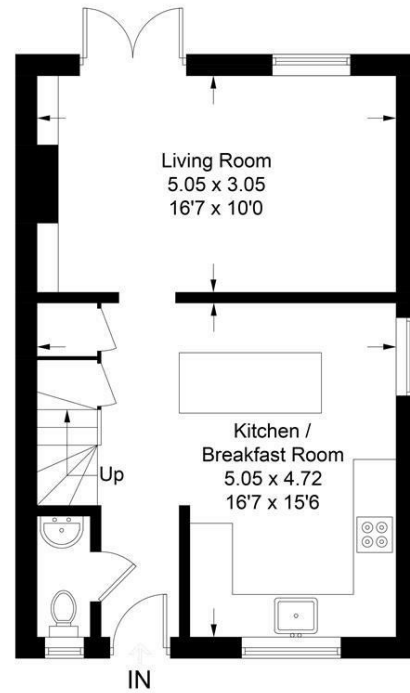




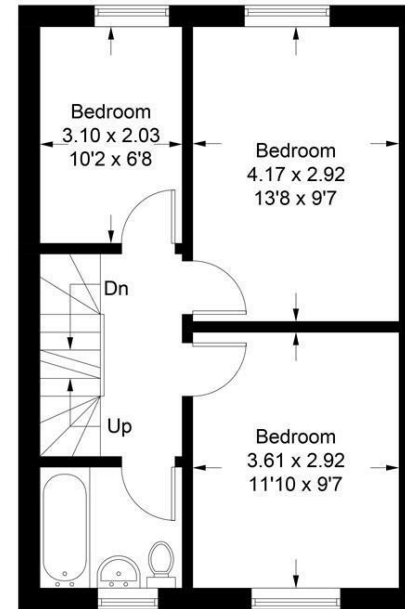
Trinity Way

Approximate Gross Internal Area = 108.6 sq m / 1169 sq ft
(Excluding Eaves)

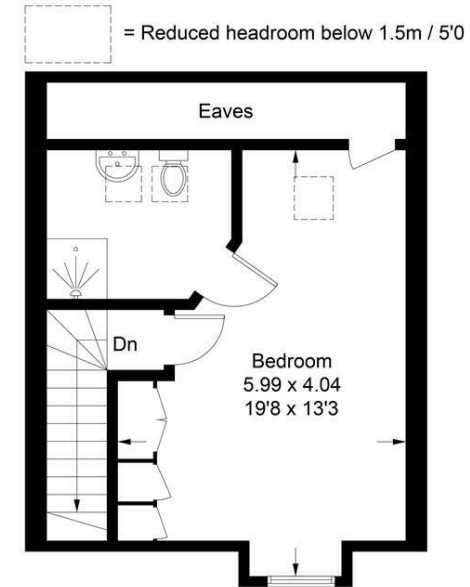
Energy Efficiency Rating		Current	Potential
Very energy efficient - lower running costs			
(92 plus) A			
(81-91) B			
(69-80) C			
(55-68) D			
(39-54) E			
(21-38) F			
(1-20) G			
Not energy efficient - higher running costs			
England & Wales	EU Directive 2002/91/EC		



Ground Floor



First Floor



Second Floor

 = Reduced headroom below 1.5m / 5'0

Illustration for identification purposes only, measurements are approximate, not to scale. floorplansUsketch.com © (ID1086922)

We endeavour to make our sales particulars accurate and reliable, however, they do not constitute or form part of an offer or any contract and none is to be relied upon as statements of representation or fact. Any services, systems and appliances listed in this specification have not been tested by us and no guarantee as to their operating ability or efficiency is given. All measurements have been taken as a guide to prospective buyers only, and are not precise. It is the responsibility of your appointed legal representative to ensure all relevant documentation is present and the property is suitable for purchase. If you require clarification or further information on any points, please contact us, especially if you are travelling some distance to view. Fixtures and fittings other than those mentioned are to be agreed with the seller by separate negotiation. Right Choice Estate Agents is a trading name of Right Property Choice Limited, 72 Beecham Berry, Basingstoke, Hampshire, England, RG224QN, Registered No: 14505100