



Right Choice Estate Agents are delighted to offer to the market with NO ONWARD CHAIN this modern four bedroom town house in the popular Beggarwood. The ground floor offers an entrance hallway, two bedrooms, shower room and utility. The first floor benefits from a generous living/dining room, kitchen and stairs providing access to the second floor which boasts two double bedrooms, en suite and family bathroom. Additional features include a private rear garden, garage and parking for two vehicles.

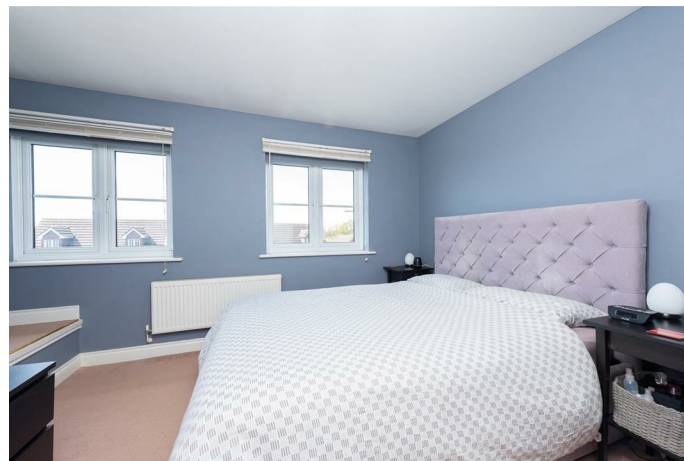
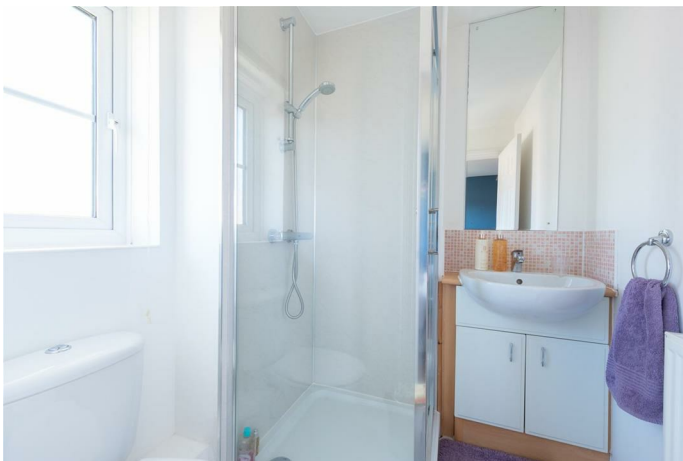
Location: Beggarwood provides easy access to M3 junction 7, A303, A30 and with main line railway to London Waterloo situated in nearby Basingstoke town centre. Local doctors surgery, chemist and retail parks are close to hand with the main shopping centre Festival Place a short drive away offering diverse shopping and restaurant dining.

Tenure: Freehold

Local Authority: Basingstoke & Deane Borough Council - Band D


Viewing Details: Strictly by appointment only. Please Contact Right Choice Estate Agents

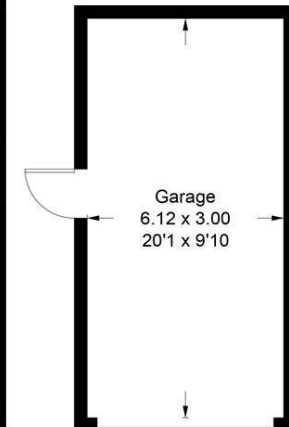
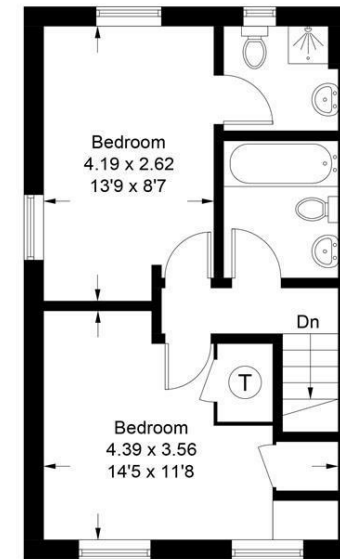
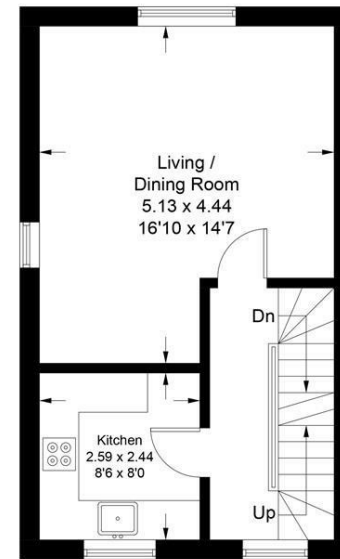
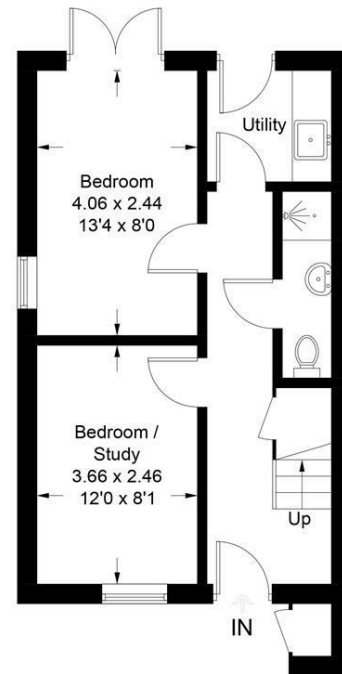




Ferndown Close

Approximate Gross Internal Area = 106.5 sq m / 1146 sq ft
 External Store / Garage = 18.8 sq m / 202 sq ft
 Total = 125.3 sq m / 1348 sq ft

Energy Efficiency Rating		Current	Potential
Very energy efficient - lower running costs			
(92 plus) A			89
(81-91) B			
(69-80) C		72	
(55-68) D			
(39-54) E			
(21-38) F			
(1-20) G			
Not energy efficient - higher running costs			
England & Wales		EU Directive 2002/91/EC	



(Not Shown In Actual Location / Orientation)

Illustration for identification purposes only, measurements are approximate, not to scale. floorplansUsketch.com © (ID1072693)

We endeavour to make our sales particulars accurate and reliable, however, they do not constitute or form part of an offer or any contract and none is to be relied upon as statements of representation or fact. Any services, systems and appliances listed in this specification have not been tested by us and no guarantee as to their operating ability or efficiency is given. All measurements have been taken as a guide to prospective buyers only, and are not precise. It is the responsibility of your appointed legal representative to ensure all relevant documentation is present and the property is suitable for purchase. If you require clarification or further information on any points, please contact us, especially if you are travelling some distance to view. Fixtures and fittings other than those mentioned are to be agreed with the seller by separate negotiation. Right Choice Estate Agents is a trading name of Right Property Choice Limited, 72 Beecham Berry, Basingstoke, Hampshire, England, RG224QN, Registered No: 14505100