



Right Choice Estate Agents are delighted to offer to the market this detached bungalow in the highly sought after Foyle Park. The property offers an entrance hallway leading to a living/dining room, kitchen, shower room and three bedrooms. Additional benefits include a generous private rear garden, garage, ample driveway parking and planning permission for the erection of side extension and raising of roof to form first floor with front and rear dormers.

Location: Cranbourne is situated on the outskirts of the town centre. Close by you will find great local amenities. There is a regular bus service to the town, and various routes to walk should you wish. The property offers great access to the M3.


Tenure: Freehold

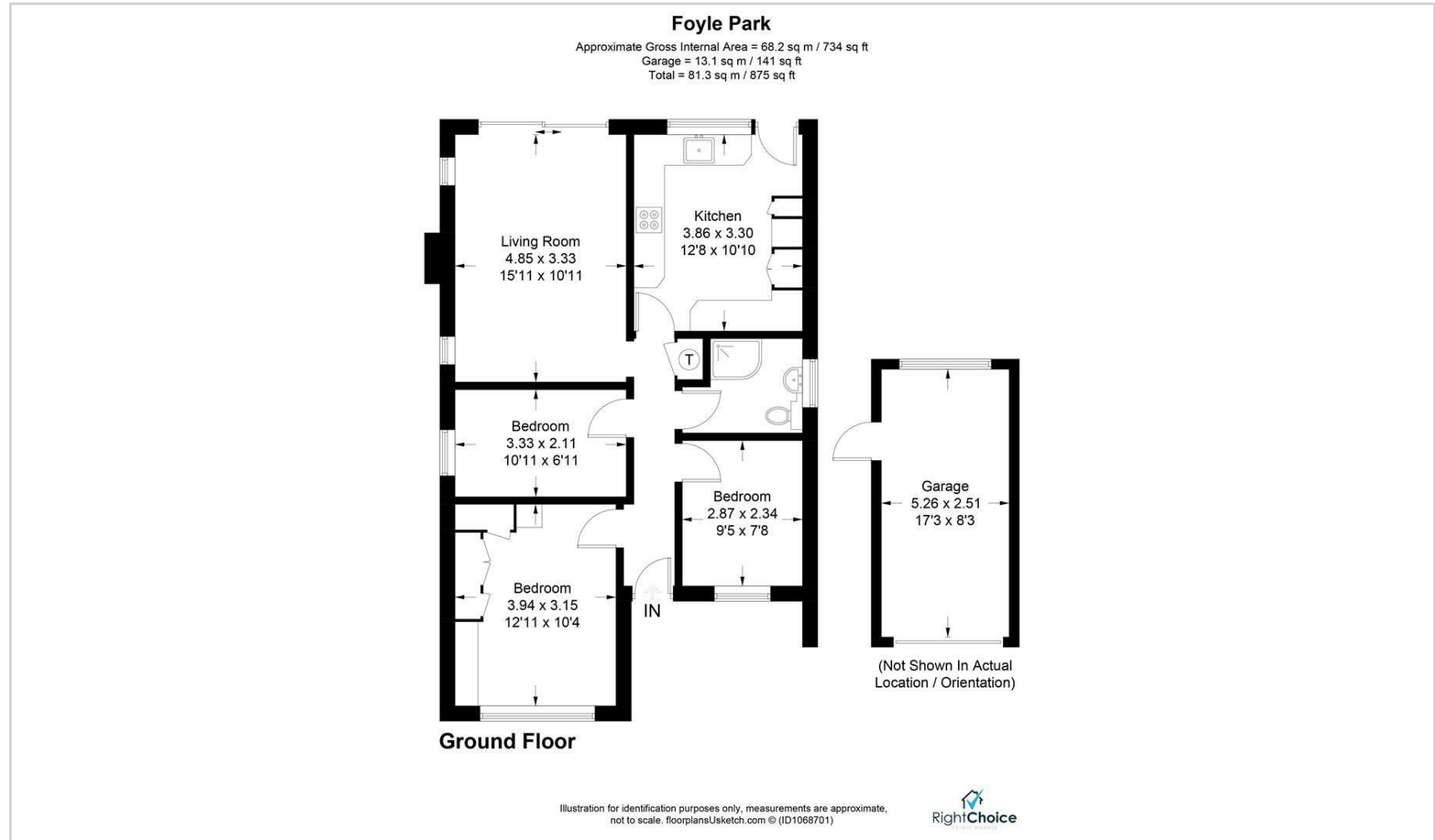
Local Authority: Basingstoke & Deane Borough Council - Band E

Viewing Details: Strictly by appointment only. Please Contact Right Choice Estate Agents





Energy Efficiency Rating		Current	Potential
<i>Very energy efficient - lower running costs</i>			
(92 plus) A			84
(81-91) B			
(69-80) C			
(55-68) D		65	
(39-54) E			
(21-38) F			
(1-20) G			
<i>Not energy efficient - higher running costs</i>			
England & Wales	EU Directive 2002/91/EC		



We endeavour to make our sales particulars accurate and reliable, however, they do not constitute or form part of an offer or any contract and none is to be relied upon as statements of representation or fact. Any services, systems and appliances listed in this specification have not been tested by us and no guarantee as to their operating ability or efficiency is given. All measurements have been taken as a guide to prospective buyers only, and are not precise. It is the responsibility of your appointed legal representative to ensure all relevant documentation is present and the property is suitable for purchase. If you require clarification or further information on any points, please contact us, especially if you are travelling some distance to view. Fixtures and fittings other than those mentioned are to be agreed with the seller by separate negotiation. Right Choice Estate Agents is a trading name of Right Property Choice Limited, 72 Beecham Berry, Basingstoke, Hampshire, England, RG224QN, Registered No: 14505100