



Right Choice Estate Agents are delighted to offer to the market this beautifully presented bungalow in the highly sought after village of Bramley. The property offers an entrance hallway leading to a living/dining room, modern fitted kitchen, three bedrooms, bathroom and en suite. Additional benefits include a large private garden, garage and driveway parking.

Location: Bramley is a village located on the outskirts of Basingstoke. It has lots of amenities including a shop, bakery, pub, barbers and a railway station with regular trains to Basingstoke and Reading that give onward access to London Paddington and Waterloo.


Tenure: Freehold

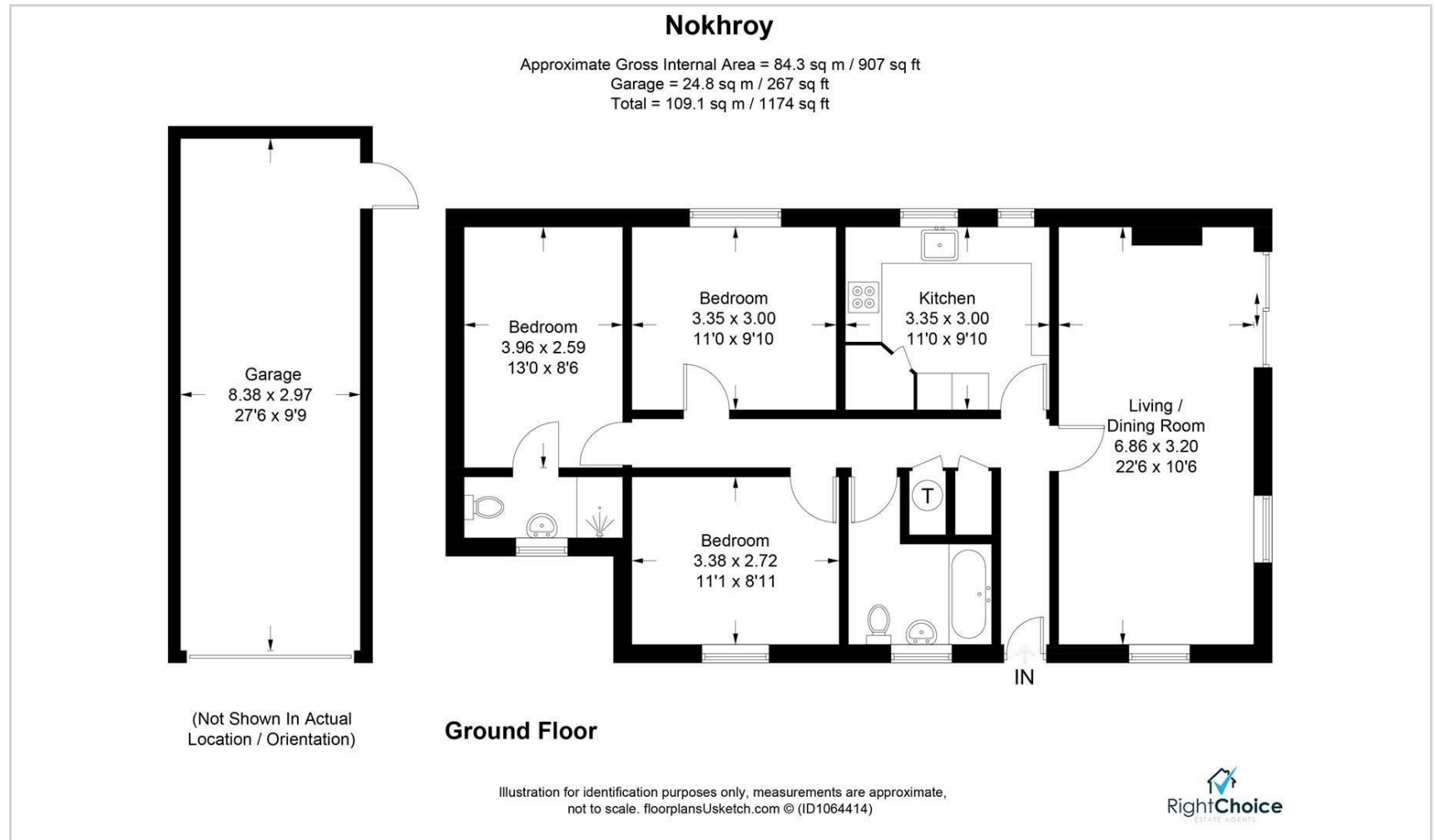
Local Authority: Basingstoke & Deane - Band D

Viewing Details: Strictly by appointment only. Please Contact Right Choice Estate Agents





Energy Efficiency Rating		Current	Potential
<i>Very energy efficient - lower running costs</i>			
(92 plus) A			71
(81-91) B			
(69-80) C			
(55-68) D			
(39-54) E			
(21-38) F			
(1-20) G			
<i>Not energy efficient - higher running costs</i>			
England & Wales		EU Directive 2002/91/EC	



We endeavour to make our sales particulars accurate and reliable, however, they do not constitute or form part of an offer or any contract and none is to be relied upon as statements of representation or fact. Any services, systems and appliances listed in this specification have not been tested by us and no guarantee as to their operating ability or efficiency is given. All measurements have been taken as a guide to prospective buyers only, and are not precise. It is the responsibility of your appointed legal representative to ensure all relevant documentation is present and the property is suitable for purchase. If you require clarification or further information on any points, please contact us, especially if you are travelling some distance to view. Fixtures and fittings other than those mentioned are to be agreed with the seller by separate negotiation. Right Choice Estate Agents is a trading name of Right Property Choice Limited, 72 Beecham Berry, Basingstoke, Hampshire, England, RG224QN, Registered No: 14505100