



Right Choice Estate Agents are delighted to offer to the market this end of terrace house in the popular area of Chineham. The ground floor offers a porch, living/dining room and kitchen. The first floor benefits from two bedrooms and family bathroom. Additional features include gas central heating, a private rear garden and allocated parking for three vehicles.

Location: Chineham is located to the north of Basingstoke and offers fantastic local schools and shops along with regular bus links into the town centre. Commuting routes are also a benefit with the M3 & A33 within a short drive.


Tenure: Freehold

Local Authority: Basingstoke & Deane Borough Council - Band C

Viewing Details: Strictly by appointment only. Please Contact Right Choice Estate Agents





Energy Efficiency Rating		Current	Potential
<i>Very energy efficient - lower running costs</i>			
(92 plus) A			88
(81-91) B			
(69-80) C			
(55-68) D		64	
(39-54) E			
(21-38) F			
(1-20) G			
<i>Not energy efficient - higher running costs</i>			
England & Wales		EU Directive 2002/91/EC	

Alderwood

Approximate Gross Internal Area = 47.7 sq m / 513 sq ft

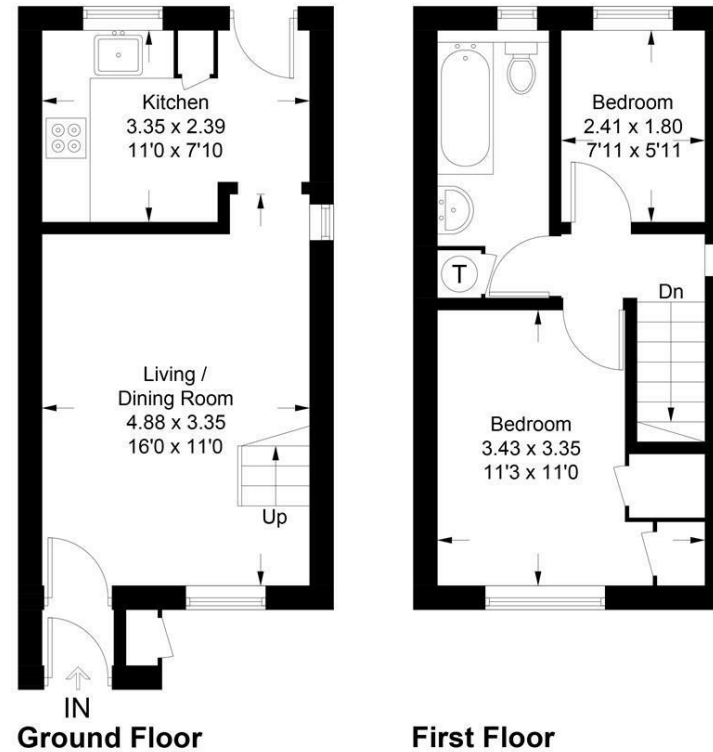


Illustration for identification purposes only, measurements are approximate, not to scale. floorplansUsketch.com © (ID1064925)



We endeavour to make our sales particulars accurate and reliable, however, they do not constitute or form part of an offer or any contract and none is to be relied upon as statements of representation or fact. Any services, systems and appliances listed in this specification have not been tested by us and no guarantee as to their operating ability or efficiency is given. All measurements have been taken as a guide to prospective buyers only, and are not precise. It is the responsibility of your appointed legal representative to ensure all relevant documentation is present and the property is suitable for purchase. If you require clarification or further information on any points, please contact us, especially if you are travelling some distance to view. Fixtures and fittings other than those mentioned are to be agreed with the seller by separate negotiation. Right Choice Estate Agents is a trading name of Right Property Choice Limited, 72 Beecham Berry, Basingstoke, Hampshire, England, RG224QN, Registered No: 14505100