



Right Choice Estate Agents are delighted to offer to the market this two double bedroom property located in the popular Gillies Meadow. The ground floor accommodation offers a modern fitted kitchen with integrated appliances, living/dining room and w/c. The first floor benefits from two double bedrooms the master of which has an en suite and a family bathroom. Additional features include double glazing, gas radiator heating with modern boiler, private rear garden with side access and parking for two vehicles.

Location: Gillies Meadow is well located and offers fantastic local schools and shops along with regular bus links into the town centre. The nearby M3 provides an excellent link to London and the South Coast, and the A339 offers links to Newbury.

Tenure: Freehold


Estate Charge - £66.16 every six months

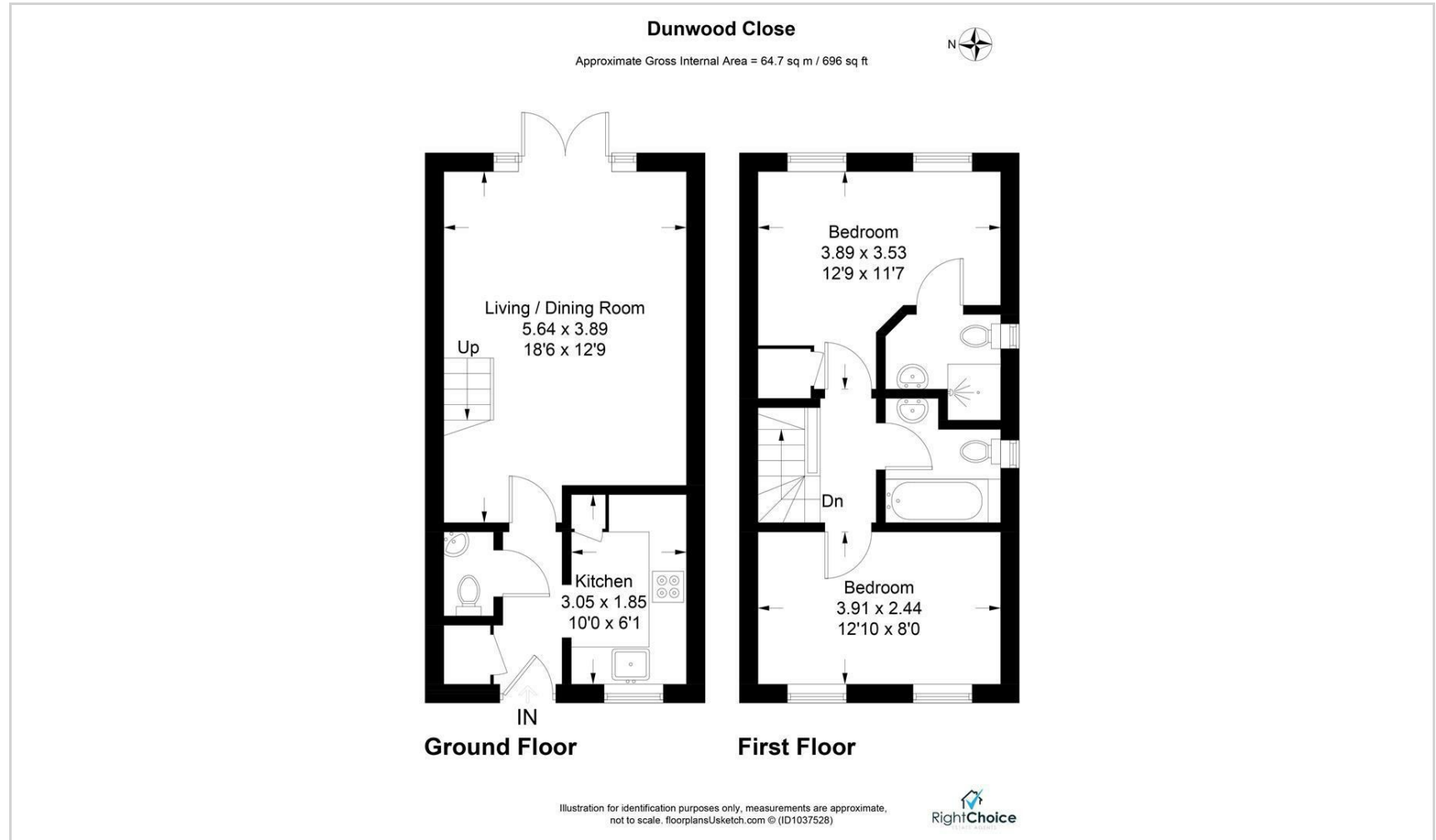
Local Authority: Basingstoke & Deane Borough Council - Band C

Viewing Details: Strictly by appointment only. Please Contact Right Choice Estate Agents





Energy Efficiency Rating		
	Current	Potential
Very energy efficient - lower running costs		
(92 plus) A		97
(81-91) B	83	
(69-80) C		
(55-68) D		
(39-54) E		
(21-38) F		
(1-20) G		
Not energy efficient - higher running costs		
England & Wales	EU Directive 2002/91/EC	



We endeavour to make our sales particulars accurate and reliable, however, they do not constitute or form part of an offer or any contract and none is to be relied upon as statements of representation or fact. Any services, systems and appliances listed in this specification have not been tested by us and no guarantee as to their operating ability or efficiency is given. All measurements have been taken as a guide to prospective buyers only, and are not precise. It is the responsibility of your appointed legal representative to ensure all relevant documentation is present and the property is suitable for purchase. If you require clarification or further information on any points, please contact us, especially if you are travelling some distance to view. Fixtures and fittings other than those mentioned are to be agreed with the seller by separate negotiation. Right Choice Estate Agents is a trading name of Right Property Choice Limited, 72 Beecham Berry, Basingstoke, Hampshire, England, RG224QN, Registered No: 14505100