



## Deals Gateway, SE10

£260,000

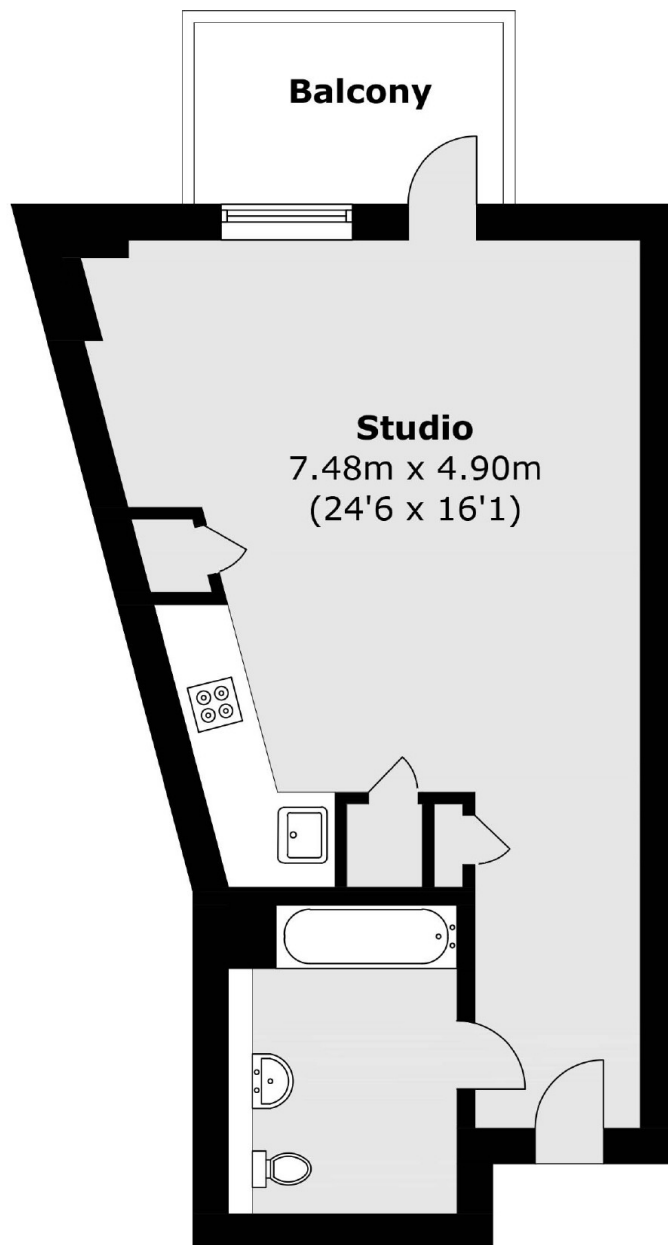
A studio apartment in a modern development in sought after location that has been finished to a high standard and is offered to the market chain free. This property further benefits from a private balcony and amazing city views.

Washington building is perfectly located next to Deptford Bridge DLR, giving access to Canary Wharf in 15 minutes and Bank under 30 minutes. Deptford high street is close by with its array of shops, restaurants and amenities, as well as both Greenwich and Blackheath.

### Features

- City Views
- Immaculate Throughout
- Private Balcony
- Chain Free
- Ideal First Purchase
- Modern

# Deals Gateway, London, SE10



Total area (approx.): 31.2 sq. m (335.8 sq. ft)

Balcony area (approx.): 3.9 sq. m (42.0 sq. ft)