



## West Parkside, SE10

£460 Per week

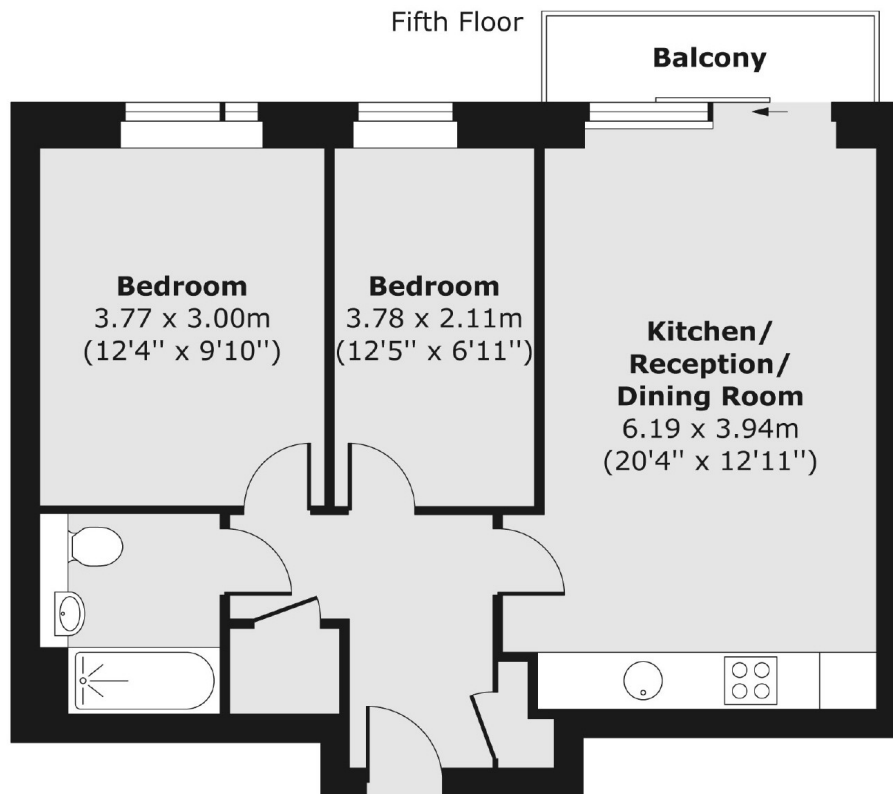
Modern two bedroom apartment in this popular North Greenwich development. This property features solid wooden flooring throughout, a stylish bath suite, spacious master bedroom and smaller second double bedroom. The lounge offers an open plan kitchen and a balcony to enjoy views to the Wharf.

Located only 0.5 miles to North Greenwich Jubilee Line, with access to Canary Wharf, London Bridge and Waterloo with ease. The Greenwich Peninsula and O2 offer a wealth of amenities, restaurants and coffee shops for your enjoyment.

### Features

- Two Bedrooms
- Open Plan Living
- Wooden Floors
- Private Balcony
- Great Location

# West Parkside, London, SE10



Total area (approx.) 54.20 sq. m (583 sq. ft)  
Balcony area (approx.) 3.14 sq. m (34 sq. ft)