



Cutter Lane, SE10

£1,800,000

A luxurious three double bedrooms two bathrooms apartment with a private terrace and amazing views across the River Thames. The prestigious building is designed by Design Haus Liberty, the interiors have been inspired by Greenwich Peninsula's unique water-flanked position on the Thames, overlooked from the private terrace. This property further benefits from being just over 1,558 sqft.

Located a short walk from North Greenwich bus and tube station, adjacent to the IFS Cloud Cable Car and opposite North Greenwich Pier, transport links are readily available.

Features

- Amazing River Views
- Secure Allocated Underground Parking
- Access to Five Residents Roof Terraces
- 24 Hour Concierge
- Private Terrace
- Three Double Bedrooms



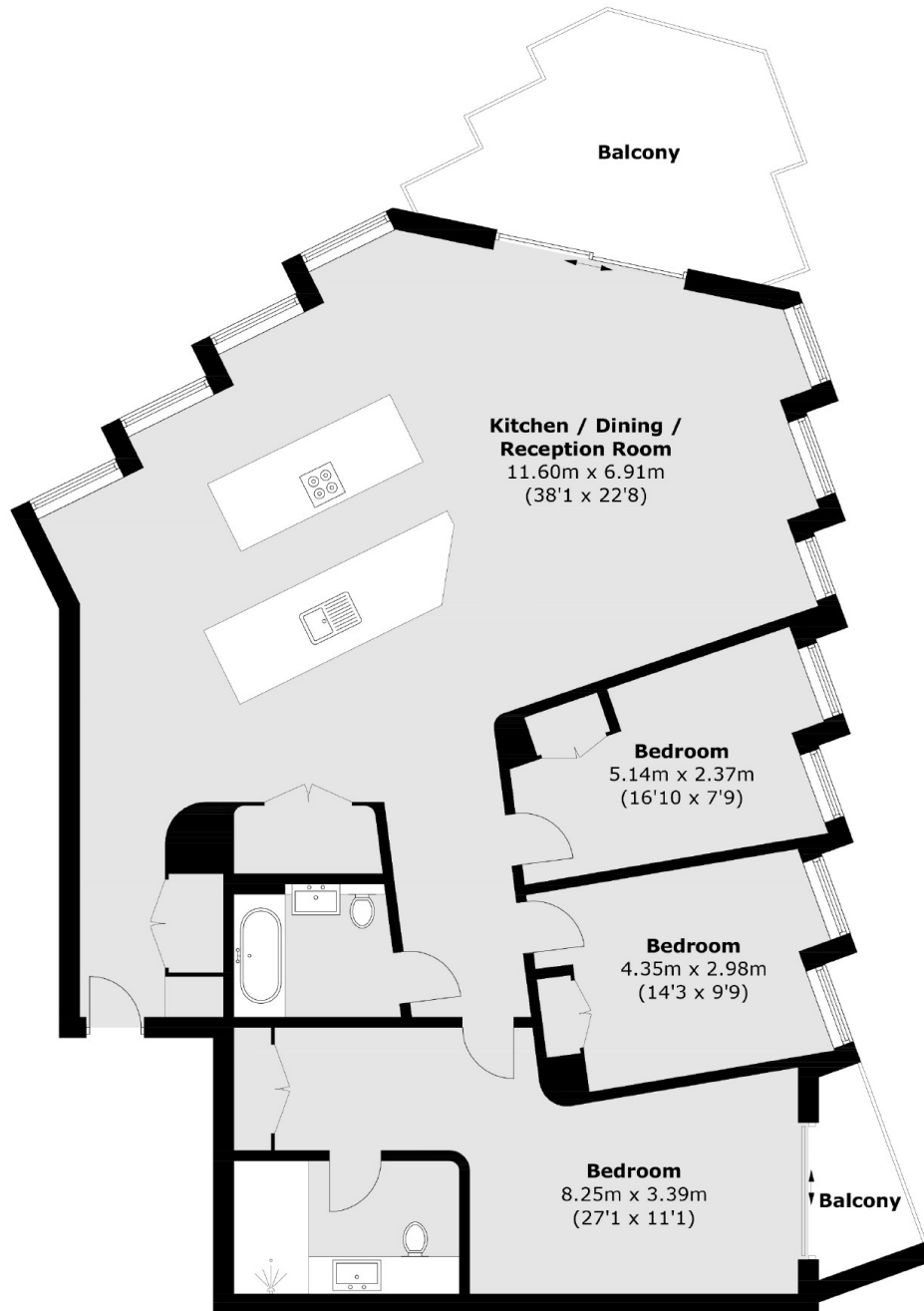
Cutter Lane, SE10

No. 5 Upper Riverside, the final building to complete Greenwich Peninsula's 'Upper Riverside' neighbourhood in 2020, was designed by world-famous architects SOM.

Residents of No. 5 Upper Riverside also enjoy access to the 'Upper Riverside Club', offering access to a plethora of superb amenities including three gyms, 15th floor swimming pool, cinema, multimedia room and 24 hour concierge.



Cutter Lane,
London, SE10



Total area (approx.): 144.7 sq. m (1,557.5 sq. ft)
Balcony : 14.7 sq. m (158.2 sq. ft)