



## Greenwich High Road, SE10

### £500,000

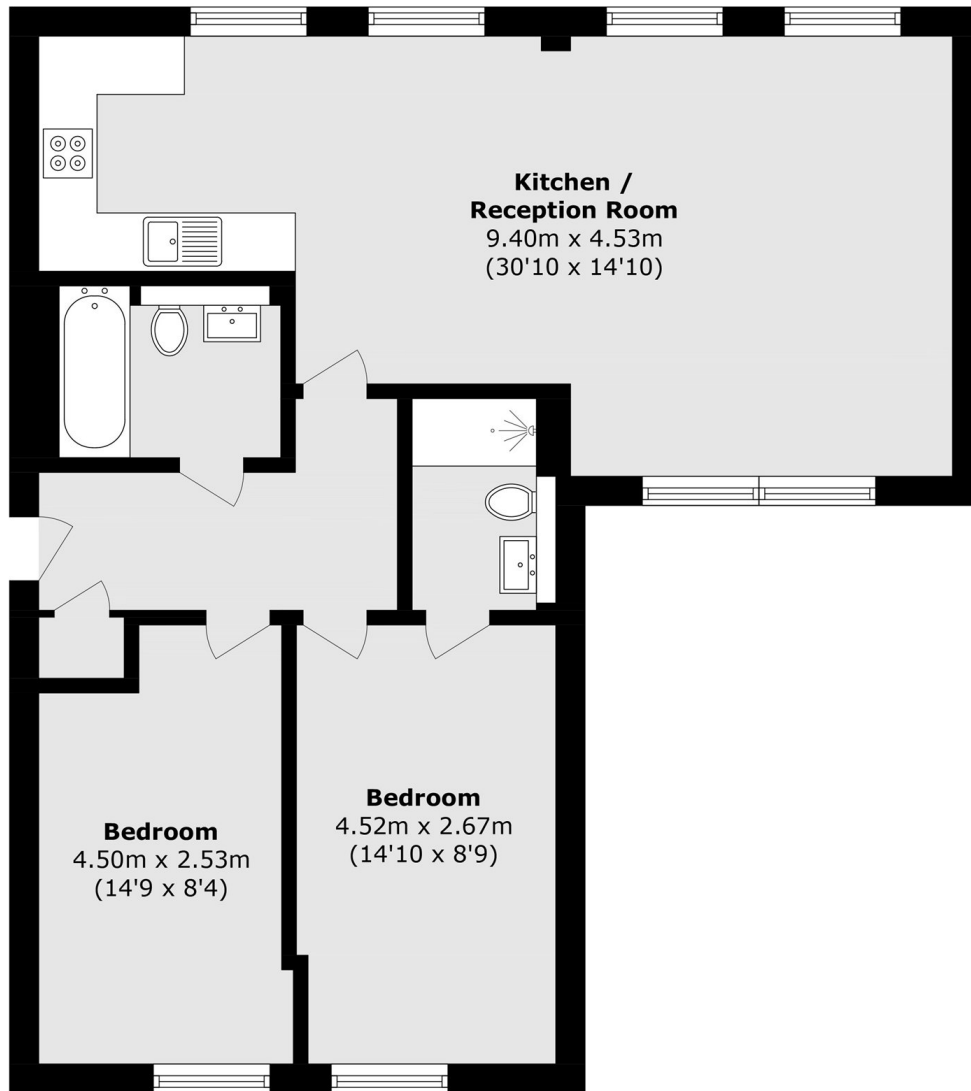
A perfectly presented, two double bedroom two bathroom modern apartment, positioned on Greenwich high road. The property has been finished to a high standard, including thoughtful and high quality renovations by the current owners which have ensured the property is modern but with a great degree of character. The property is offered to the market chain free.

Conveniently located at the lower end of Greenwich High Road for all the attractions Royal Greenwich offers. The apartment is situated moments away from mainline rail and DLR, offering easy access to the city and Canary Wharf. The town centre is also within close proximity, where you can enjoy a variety of shops, restaurants, Greenwich Market, The Royal Park, and riverboat service.

### Features

Two Bedrooms  
Two Bathrooms  
Immaculate Throughout  
Sought After Location  
Ideal First Purchase  
Chain Free

Greenwich High Road,  
London, SE10



Total area (approx.): 74.7 sq. m (804.0 sq. ft)

**Dexters**

Greenwich  
275 Greenwich High Road  
Greenwich  
London  
Sales  
020 8815 2215

Energy Rating: . We aim to make our particulars both accurate and reliable. However they are not guaranteed; nor do they form part of an offer or contract. If you require clarification on any points then please contact us, especially if you're traveling some distance to view. Please note that appliances and heating systems have not been tested and therefore no warranties can be given as to their good working order.

 **RICS** | Regulated  
Estate Agent  
and Letting Agent

[dexters.co.uk](https://www.dexters.co.uk)