



Cutter Lane, SE10

£700,000

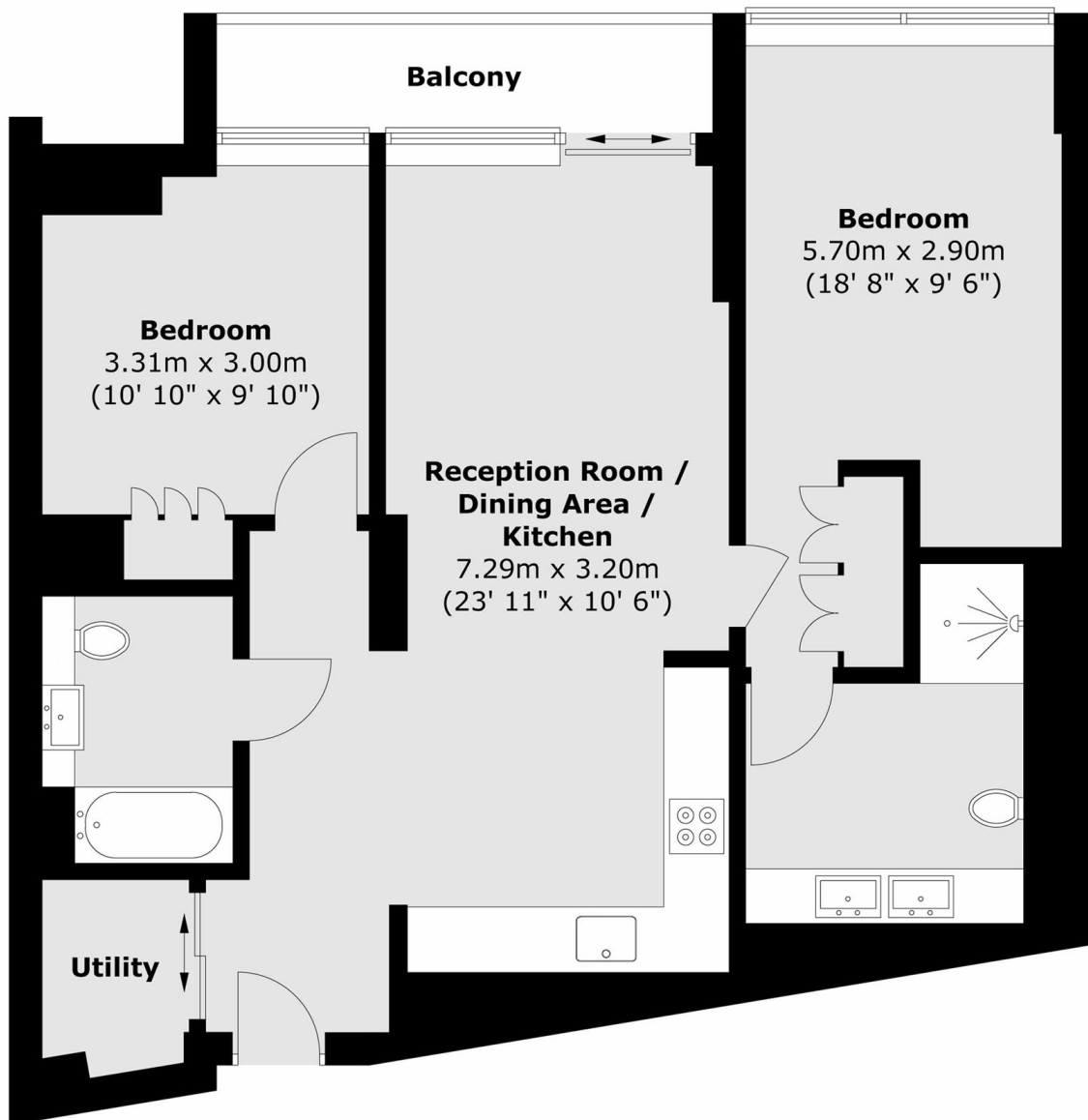
A luxurious two-bedroom, two-bathroom apartment with a private balcony and stunning city views. The prestigious building is in a sought after location and has been finished to a phenomenal standard which further benefits from a 24 hour concierge and gym and swimming facilities for residents only.

Located a short walk from North Greenwich bus and tube station, adjacent to the IFS Cloud Cable Car and opposite North Greenwich Pier, transport links are readily available.

Features

- Two Bathrooms
- Amazing River Views
- 24 Hour Concierge
- Private Balcony
- Modern Throughout
- Swimming Pool/ Gym

Cutter Lane,
London, SE10



Total area (approx.) : 74.3 sq. m (800 sq. ft)
Total balcony area (approx.) : 5 sq. m (54 sq. ft)