



Winforton Street, SE10  
£1,800,000

**Dexters**



## Winforton Street, SE10

An opportunity to acquire this impressive modern four-bedroom, two-bathroom detached gated family home that offers generous and versatile accommodation arranged over three well-planned floors. The property further benefits from a private garage, a roof terrace at the front and a private garden at the rear and is offered to the market chain free.

The ground floor provides excellent living and entertaining space, comprising a bright and welcoming reception room, a separate fourth bedroom, and a utility room, offering practical day-to-day functionality. There is also direct access to the integral garage, adding further convenience. On the first floor, the heart of the home is revealed with a spacious reception room opening onto a private terrace, perfect for indoor-outdoor living. A well-appointed modern kitchen sits alongside, with access leading down to the rear garden, creating an ideal flow for family life and entertaining. The second floor hosts three well-proportioned bedrooms, including a generous principal bedroom, along with a family bathroom and additional shower room, providing comfortable accommodation for growing families.

Winforton street is a prime road located moments from Greenwich station and DLR as well as all the amenities on offer from independent shops and bars, to large chain brands all located within a short walk away. Royal Greenwich park is also moments away.

### Features

- Detached
- Chain Free
- Modern
- Finished To A High Standard
- Sought After Location
- Prime West Greenwich



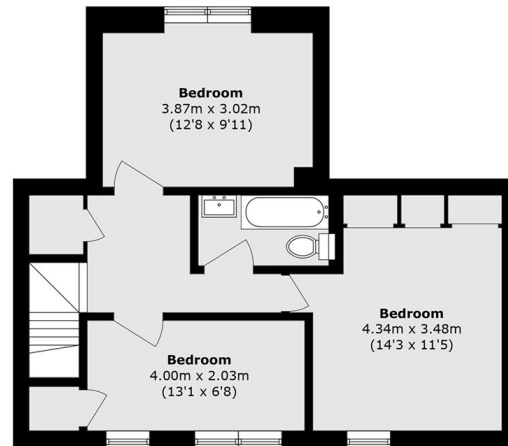




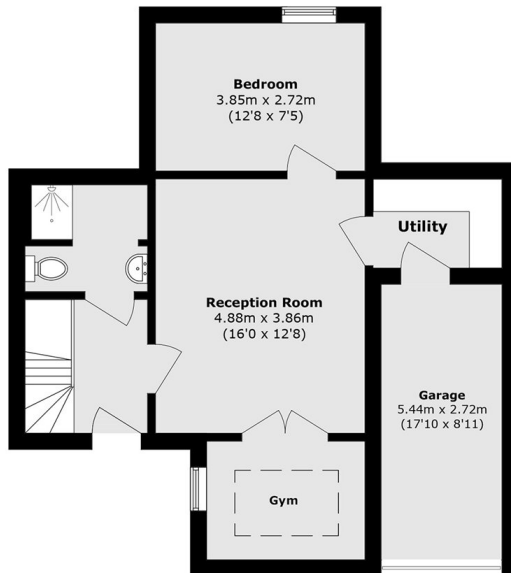




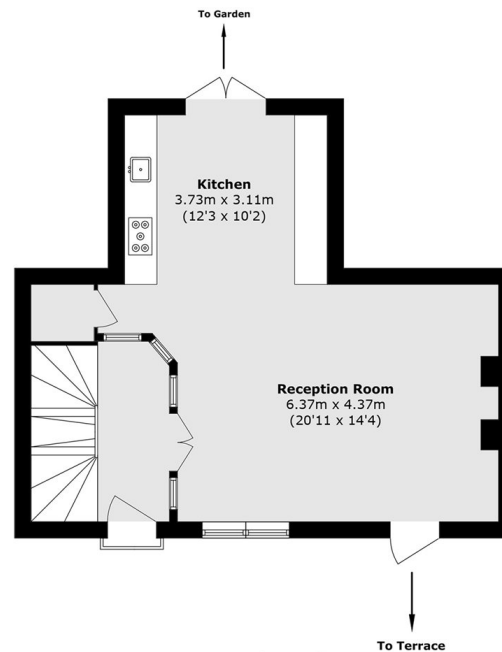
# Winforton Street, London, SE10



**Second Floor**



**Ground Floor**



**First Floor**

Total area (approx.): 164.8 sq. m (1615.7 sq. ft)  
(Including Garage)