



## Dutton Street, SE10

£750,000

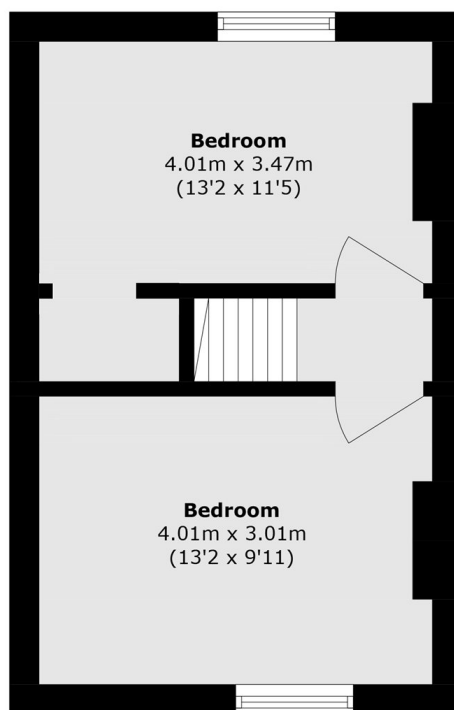
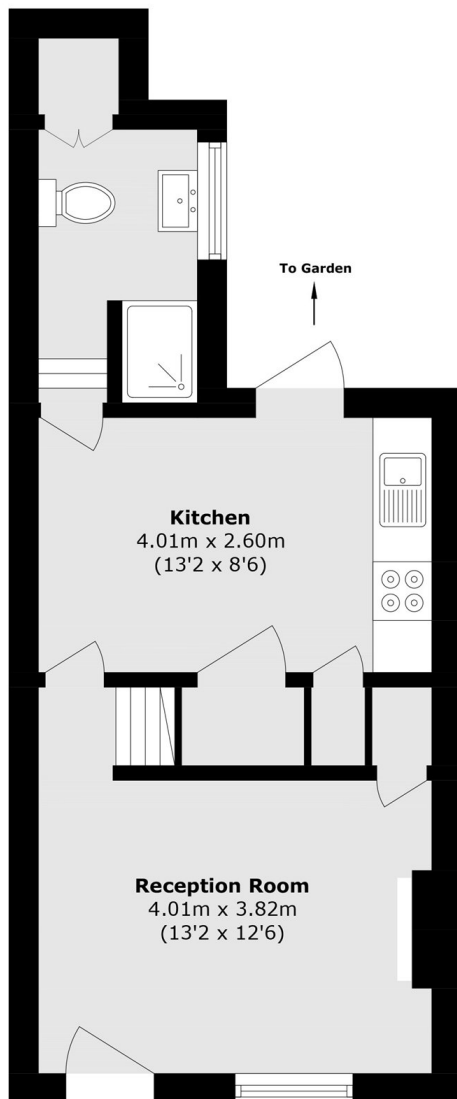
This exceptional two-bedroom Victorian home has been sympathetically restored and renovated to a very high standard, while preserving period features including working fireplaces and original floorboards throughout. It benefits from two equally sized bedroom, a private and secluded garden with decking, and substantial storage space, including a boarded loft and bike store.

The property is situated in a very sought after location, a short walk from both Greenwich mainline and DLR stations. Greenwich town centre is close by as are a varied selection of large, green open spaces including The Point pocket park, Greenwich Park and Blackheath common.

### Features

- Traditional features
- Finished to a very high standard
- Sought After Location
- Two equal-sized bedrooms
- Freehold
- Private and secluded garden

# Dutton Street, London, SE10



Total area (approx.): 58.6 sq. m (630.7 sq. ft)

## Dexters

Greenwich  
275 Greenwich High Road  
Greenwich  
London  
Sales  
020 8815 2215

Energy Rating: D. We aim to make our particulars both accurate and reliable. However they are not guaranteed; nor do they form part of an offer or contract. If you require clarification on any points then please contact us, especially if you're traveling some distance to view. Please note that appliances and heating systems have not been tested and therefore no warranties can be given as to their good working order.

 **RICS** | Regulated  
Estate Agent  
and Letting Agent

[dexters.co.uk](https://www.dexters.co.uk)