



Dutton Street, SE10

£750,000

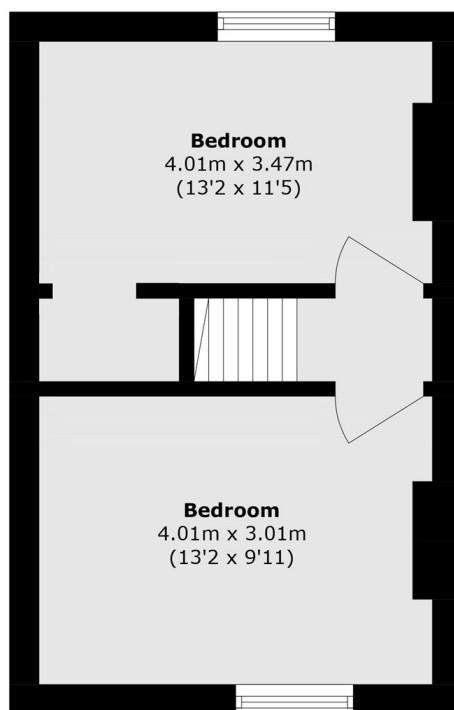
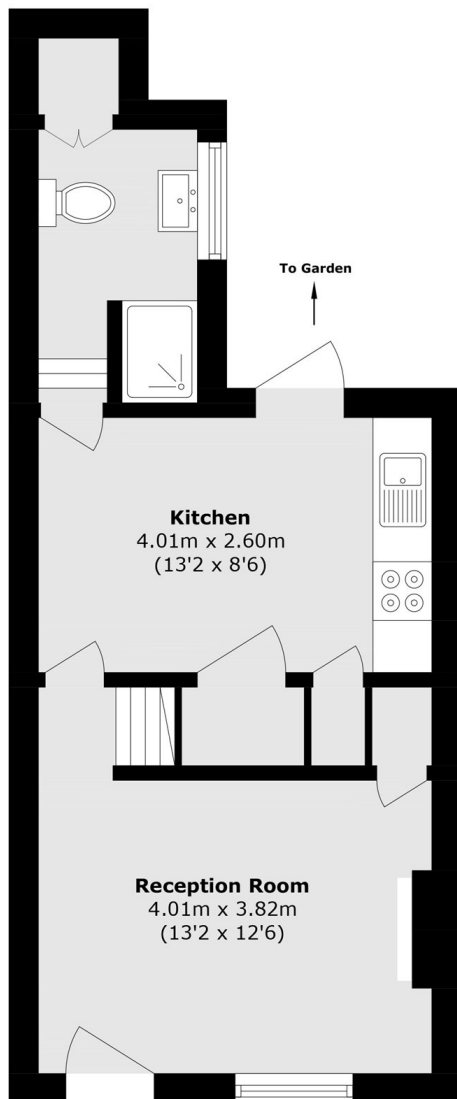
This exceptional two-bedroom Victorian home has been sympathetically restored and renovated to a very high standard, while preserving period features including working fireplaces and original floorboards throughout. It benefits from two equally sized bedroom, a private and secluded garden with decking, and substantial storage space, including a boarded loft and bike store.

The property is situated in a very sought after location, a short walk from both Greenwich mainline and DLR stations. Greenwich town centre is close by as are a varied selection of large, green open spaces including The Point pocket park, Greenwich Park and Blackheath common.

Features

- Traditional features
- Finished to a very high standard
- Sought After Location
- Two equal-sized bedrooms
- Freehold
- Private and secluded garden

Dutton Street, London, SE10



Total area (approx.): 58.6 sq. m (630.7 sq. ft)