



## Blackheath Road, SE10

### £350,000

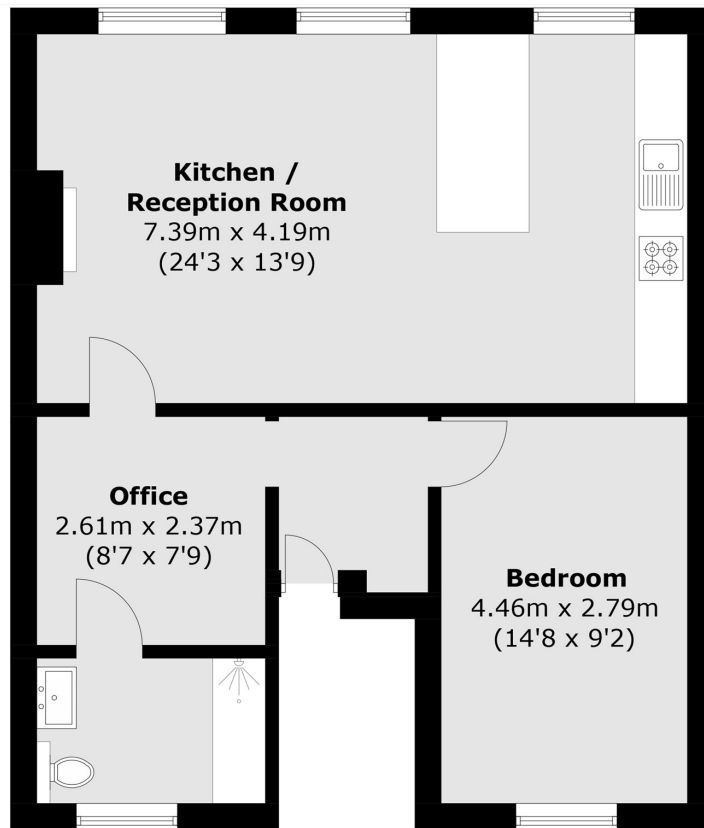
Offered to the market with No Chain, this superb top floor One Bedroom apartment offers almost 650 Sq Ft of living space. The current owners have undertaken extensive refurbishment on the property including new kitchen and bathroom within the last couple of years as well as a new roof to the property in 2020. The flat further benefits from office space as well as secure, gated parking and a lease in excess of 150 years.

The property is ideally located for access to several stations, including Greenwich Mainline, Deptford Bridge DLR and access out of London via the A2. Greenwich Park and the open Heath are just moments away.

### Features

- Large One Bedroom Apartment
- Top Floor
- 643 Sq Ft Of Living Space
- Close To Transport
- Secure Gated Parking
- Long Lease

# Blackheath Road, London, SE10



Total area (approx.): 59.8 sq. m (643.7 sq. ft)