



Pelton Road, SE10

£475,000

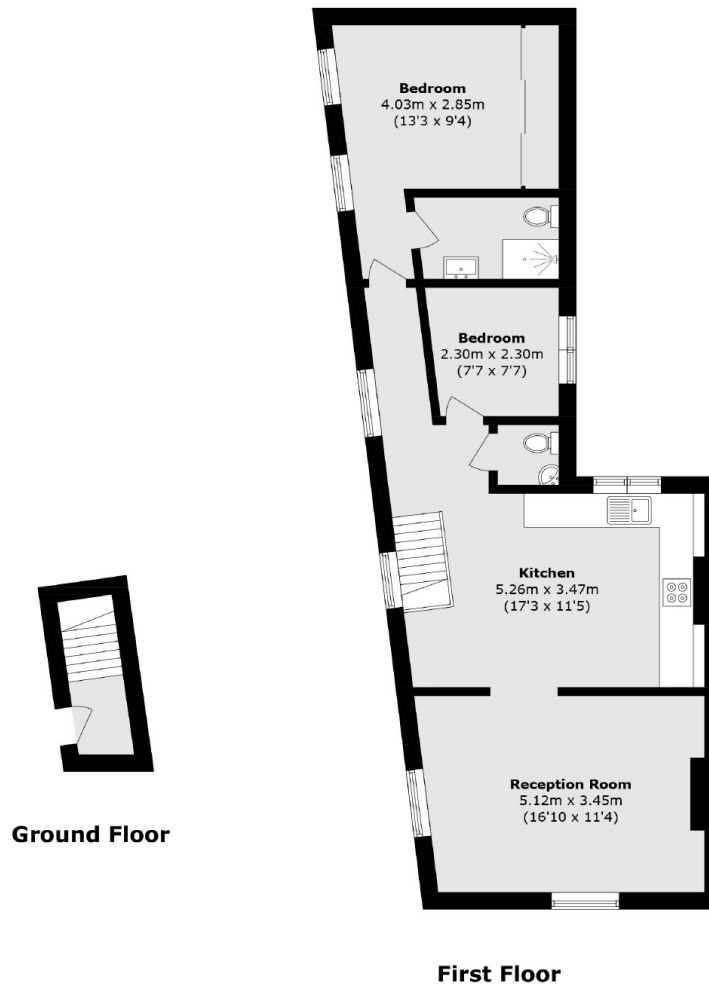
A charming two bedroom first floor period conversion flat in a sought after location with its own private rear garden which benefits from being south facing.

Pelton Road is a quiet residential street located a short walk from Maze Hill Mainline Station providing direct links to London Bridge, Cannon Street and St Pancras. Greenwich Park is located nearby as are the many historical attractions of Greenwich including the National Maritime Museum, Royal Observatory and the Royal Naval College. There are an array of local shops, restaurants and cafés along Trafalgar Road for residents to enjoy while larger supermarkets are also within easy reach. A number of popular nurseries and schools for families are also in the local vicinity.

Features

- O.I.E.O
- Two W.C's
- Period Conversion
- Private Garden
- Private Entrance
- No Ground Rent

Pelton Road,
London, SE10



Total area (approx.): 68.4 sq. m (736.2 sq. ft)

Dexters

Greenwich
275 Greenwich High Road
Greenwich
London
Sales
020 8815 2215

Energy Rating: D. We aim to make our particulars both accurate and reliable. However they are not guaranteed; nor do they form part of an offer or contract. If you require clarification on any points then please contact us, especially if you're traveling some distance to view. Please note that appliances and heating systems have not been tested and therefore no warranties can be given as to their good working order.

 **RICS** | Regulated
Estate Agent
and Letting Agent

[dexters.co.uk](https://www.dexters.co.uk)